

Test Name : IBPS PO MAIN 02
Difficulty Level : medium
Test Type : Free

Total Questions : 155
Total Marks : 155.00
Duration : 180.00 mins

Q.1 **Essay** : 1-5):Passage:

Study the information given below and answer the given questions.

F, A, J, Q, I, P, G, B and H nine footballers who are staying in a hotel for a match tomorrow, but not necessarily in the same order. The Hotel has nine floors and only one person stays on one floor. All of them belong to different cities, i.e. R, E, S, T, U, C, V, D and W, but not necessarily in the same order. The ground floor is numbered 1, the floor above it is numbered 2, and so on, and the topmost floor is numbered 9.

B belongs to T and stays on an even-numbered floor. Four of them belong to country M while the other four belongs to X. Each of them is wearing a different numbered Jersey from 1 to 9. F stays on any even-numbered floor below the floor on which B stays.

There are only two persons who have consecutive jersey numbers and stays immediately next to each other. The one who belongs to D stays on the fourth floor.

City named R and U are a part of X. The one who stays on top floor is wearing an even numbered jersey. The floor number of P is the same as the jersey number of J. I stays on the second floor and belongs to S. The one who belongs to W stays on the third floor.

F does not belong to C. H belongs to X. There are two floors gap between the floors on which the persons who are from V and T stay. J belongs to E. There are three floors between the floors on which J and G stay. The jersey number of I is the same as the floor number of the one living immediately above him. H wears 6 and F wears 9 numbered jersey and the one having same jersey and floor number does not stay on any of the floor between them. Q stays on a floor immediately above H's floor. Only one person has the same floor number and jersey number and he does not stay on an odd numbered floor. City V is neither a part of country M nor X. The one whose jersey number is 4 belong to city R. There is one floor between the floors on which P and G stay. P does not belong to W. The one who belongs to R stays on the topmost floor. P does not stay on the ground floor. C is a part of X. H does not belong to M. One of the person who belongs to country X has jersey number 5.

Who amongst the following players belong to C? **(1 Mark)**

- A. Q
- B. H
- C. G
- D. P

E. None of these

Q.2 **Essay** : 1-5):Passage:

Study the information given below and answer the given questions.

F, A, J, Q, I, P, G, B and H nine footballers who are staying in a hotel for a match tomorrow, but not necessarily in the same order. The Hotel has nine floors and only one person stays on one floor. All of them belong to different cities, i.e. R, E, S, T, U, C, V, D and W, but not necessarily in the same order. The ground floor is numbered 1, the floor above it is numbered 2, and so on, and the topmost floor is numbered 9.

B belongs to T and stays on an even-numbered floor. Four of them belong to country M while the other four belongs to X. Each of them is wearing a different numbered Jersey from 1 to 9. F stays on any even-numbered floor below the floor on which B stays.

There are only two persons who have consecutive jersey numbers and stays immediately next to each other. The one who belongs to D stays on the fourth floor. City named R and U are a part of X. The one who stays on top floor is wearing an even numbered jersey. The floor number of P is the same as the jersey number of J. I stays on the second floor and belongs to S. The one who belongs to W stays on the third floor. F does not belong to C. H belongs to X. There are two floors gap between the floors on which the persons who are from V and T stay. J belongs to E. There are three floors between the floors on which J and G stay. The jersey number of I is the same as the floor number of the one living immediately above him. H wears 6 and F wears 9 numbered jersey and the one having same jersey and floor number does not stay on any of the floor between them. Q stays on a floor immediately above H's floor. Only one person has the same floor number and jersey number and he does not stay on an odd numbered floor. City V is neither a part of country M nor X. The one whose jersey number is 4 belong to city R. There is one floor between the floors on which P and G stay. P does not belong to W. The one who belongs to R stays on the topmost floor. P does not stay on the ground floor. C is a part of X. H does not belong to M. One of the person who belongs to country X has jersey number 5.

Which amongst the following persons wears 2 number jersey? **(1 Mark)**

- A. P
- B. G
- C. Q
- D. Either G or Q
- E. None of these

Q.3 **Essay** : 1-5):Passage:

Study the information given below and answer the given questions.

F, A, J, Q, I, P, G, B and H nine footballers who are staying in a hotel for a match tomorrow, but not necessarily in the same order. The Hotel has nine floors and only one person stays on one floor. All of them belong to different cities, i.e. R, E, S, T, U, C, V, D and W, but not necessarily in the same order. The ground floor is numbered 1, the floor above it is numbered 2, and so on, and the topmost floor is numbered 9.

B belongs to T and stays on an even-numbered floor. Four of them belong to country M while the other four belongs to X. Each of them is wearing a different numbered Jersey from 1 to 9. F stays on any even-numbered floor below the floor on which B stays.

There are only two persons who have consecutive jersey numbers and stays immediately next to each other. The one who belongs to D stays on the fourth floor. City named R and U are a part of X. The one who stays on top floor is wearing an even numbered jersey. The floor number of P is the same as the jersey number of J. I stays on the second floor and belongs to S. The one who belongs to W stays on the third floor. F does not belong to C. H belongs to X. There are two floors gap between the floors on which the persons who are from V and T stay. J belongs to E. There are three floors between the floors on which J and G stay. The jersey number of I is the same as the floor number of the one living immediately above him. H wears 6 and F wears 9 numbered jersey and the one having same jersey and floor number does not stay on any of the floor between them. Q stays on a floor immediately above H's floor. Only one person has the same floor number and jersey number and he does not stay on an odd numbered floor. City V is neither a part of country M nor X. The one whose jersey number is 4 belong to city R. There is one floor between the floors on which P and G stay. P does not belong to W. The one who belongs to R stays on the topmost floor. P does not stay on the ground floor. C is a part of X. H does not belong to M. One of the person who belongs to country X has jersey number 5.

F belongs to which of the following place? **(1 Mark)**

- A. D
- B. W
- C. U
- D. R
- E. None of these

Q.4 **Essay** : 1-5):Passage:

Study the information given below and answer the given questions.

F, A, J, Q, I, P, G, B and H nine footballers who are staying in a hotel for a match tomorrow, but not necessarily in the same order. The Hotel has nine floors and only one person stays on one floor. All of them belong to different cities, i.e. R, E, S, T, U, C, V, D and W, but not necessarily in the same order. The ground floor is numbered 1, the floor above it is numbered 2, and so on, and the topmost floor is numbered 9.

B belongs to T and stays on an even-numbered floor. Four of them belong to country M while the other four belongs to X. Each of them is wearing a different numbered Jersey from 1 to 9. F stays on any even-numbered floor below the floor on which B stays.

There are only two persons who have consecutive jersey numbers and stays immediately next to each other. The one who belongs to D stays on the fourth floor. City named R and U are a part of X. The one who stays on top floor is wearing an even numbered jersey. The floor number of P is the same as the jersey number of J. I stays on the second floor and belongs to S. The one who belongs to W stays on the third floor. F does not belong to C. H belongs to X. There are two floors gap between the floors on which the persons who are from V and T stay. J belongs to E. There are three floors between the floors on which J and G stay. The jersey number of I is the same as the floor number of the one living immediately above him. H wears 6 and F wears 9 numbered jersey and the one having same jersey and floor number does not stay on any of the floor between them. Q stays on a floor immediately above H's floor. Only one person has the same floor number and jersey number and he does not stay on an odd numbered floor. City V is neither a part of country M nor X. The one whose jersey number is 4 belong to city R. There is one floor between the floors on which P and G stay. P does not belong to W. The one who belongs to R stays on the topmost floor. P does not stay on the ground floor. C is a part of X. H does not belong to M. One of the person who belongs to country X has jersey number 5.

If one of the given nine persons belongs to country Y, who among the following could be it? **(1 Mark)**

- A. I
- B. Q
- C. F
- D. G
- E. None of these

Q.5 **Essay : 1-5):**Passage:

Study the information given below and answer the given questions.

F, A, J, Q, I, P, G, B and H nine footballers who are staying in a hotel for a match tomorrow, but not necessarily in the same order. The Hotel has nine floors and only one person stays on one floor. All of them belong to different cities, i.e. R, E, S, T, U, C, V, D and W, but not necessarily in the same order. The ground floor is numbered 1, the floor above it is numbered 2, and so on, and the topmost floor is numbered 9. B belongs to T and stays on an even-numbered floor. Four of them belong to country M while the other four belongs to X. Each of them is wearing a different numbered Jersey from 1 to 9. F stays on any even-numbered floor below the floor on which B stays. There are only two persons who have consecutive jersey numbers and stays immediately next to each other. The one who belongs to D stays on the fourth floor. City named R and U are a part of X. The one who stays on top floor is wearing an even numbered jersey. The floor number of P is the same as the jersey number of J. I stays on the second floor and belongs to S. The one who belongs to W stays on the third floor. F does not belong to C. H belongs to X. There are two floors gap between the floors on which the persons who are from V and T stay. J belongs to E. There are three floors between the floors on which J and G stay. The jersey number of I is the same as the floor number of the one living immediately above him. H wears 6 and F wears 9 numbered jersey and the one having same jersey and floor number does not stay on any of the floor between them. Q stays on a floor immediately above H's floor. Only one person has the same floor number and jersey number and he does not stay on an odd numbered floor. City V is neither a part of country M nor X. The one whose jersey number is 4 belong to city R. There is one floor between the floors on which P and G stay. P does not belong to W. The one who belongs to R stays on the topmost floor. P does not stay on the ground floor. C is a part of X. H does not belong to M. One of the person who belongs to country X has jersey number 5.

How many floors are there between the floor on which H stays and the floor on which J stays? **(1 Mark)**

- A. One
- B. Two
- C. None
- D. Three
- E. More than three

Q.6 **Essay** : 6-10):Passage:

Study the information carefully and answer the questions given below.

There is 3×5 matrix which can produce signals which in turn help in the illumination of

some bulbs. The row of the matrix are denoted by @, % and # from bottom to top and the columns are denoted by the alphabets A, B, C D and E from left to right.

@ row contains number which are consecutive multiple of 9, starting from 27 (from left to right).

% row contains number which are consecutive multiple of 13, starting from 26 (from left to right).

row contains number which are consecutive multiple of 17, starting from 17 (from left to right).

The matrix helps in producing signals which can be either a single string of number X- or two-line string X and Y.

There are 4 lights P, Q, R and S. Based on the outcome of the strings mentioned above one of the light blinks.

Condition for blink:

1. If the outcome is below 78, then P will blink
2. If outcome range is 78-100, then Q blinks
3. If outcome range is 100-201, then R blinks
4. If outcome is greater than 201, then S blinks

For outcome of the string:

1. If the string has all odd numbers, then outcome of the string is obtained by adding all the ten's place of the two-digit numbers.
2. If an even number followed by an odd prime number then the one's places of all the two-digit numbers are deleted and, tenth place are multiplied to get the outcome
3. If the string contains two even numbers, then the outcome of the string is obtained by the subtraction of sum of even number and sum of odd numbers.
4. If no above logic is followed, then simple outcome is addition of the numbers.

If $x = @A \#C @E$ & $Y = @A \%B @B \%A$, and the outcome will be $X*Y$ then which bulb blink? **(2 Mark)**

- A. Q
- B. P
- C. S
- D. R
- E. Either R or S

Q.7 **Essay** : 6-10):Passage:

Study the information carefully and answer the questions given below.

There is $3*5$ matrix which can produce signals which in turn help in the illumination of

some bulbs. The row of the matrix are denoted by @, % and # from bottom to top and the columns are denoted by the alphabets A, B, C D and E from left to right.

@ row contains number which are consecutive multiple of 9, starting from 27 (from left to right).

% row contains number which are consecutive multiple of 13, starting from 26 (from left to right).

row contains number which are consecutive multiple of 17, starting from 17 (from left to right).

The matrix helps in producing signals which can be either a single string of number X- or two-line string X and Y.

There are 4 lights P, Q, R and S. Based on the outcome of the strings mentioned above one of the light blinks.

Condition for blink:

1. If the outcome is below 78, then P will blink
2. If outcome range is 78-100, then Q blinks
3. If outcome range is 100-201, then R blinks
4. If outcome is greater than 201, then S blinks

For outcome of the string:

1. If the string has all odd numbers, then outcome of the string is obtained by adding all the ten's place of the two-digit numbers.
2. If an even number followed by an odd prime number then the one's places of all the two-digit numbers are deleted and, tenth place are multiplied to get the outcome
3. If the string contains two even numbers, then the outcome of the string is obtained by the subtraction of sum of even number and sum of odd numbers.
4. If no above logic is followed, then simple outcome is addition of the numbers.

If $X = \#D \#A \%D @C$, then which bulb blink? **(2 Mark)**

- A. S
- B. Q
- C. P
- D. R
- E. Either R or S

Q.8 **Essay** : 6-10):Passage:

Study the information carefully and answer the questions given below.

There is 3×5 matrix which can produce signals which in turn help in the illumination of some bulbs. The row of the matrix are denoted by @, % and # from bottom to top and

the columns are denoted by the alphabets A, B, C D and E from left to right.

@ row contains number which are consecutive multiple of 9, starting from 27 (from left to right).

% row contains number which are consecutive multiple of 13, starting from 26 (from left to right).

row contains number which are consecutive multiple of 17, starting from 17 (from left to right).

The matrix helps in producing signals which can be either a single string of number X- or two-line string X and Y.

There are 4 lights P, Q, R and S. Based on the outcome of the strings mentioned above one of the light blinks.

Condition for blink:

1. If the outcome is below 78, then P will blink
2. If outcome range is 78-100, then Q blinks
3. If outcome range is 100-201, then R blinks
4. If outcome is greater than 201, then S blinks

For outcome of the string:

1. If the string has all odd numbers, then outcome of the string is obtained by adding all the ten's place of the two-digit numbers.
2. If an even number followed by an odd prime number then the one's places of all the two-digit numbers are deleted and, tenth place are multiplied to get the outcome
3. If the string contains two even numbers, then the outcome of the string is obtained by the subtraction of sum of even number and sum of odd numbers.
4. If no above logic is followed, then simple outcome is addition of the numbers.

If $X = \#E \%B @E$ & $Y = @A \%B$, and the outcome will be $X*Y$ then which bulb blink? **(2 Mark)**

- A. S
- B. Q
- C. P
- D. R
- E. Either P or Q

Q.9 **Essay** : 6-10):Passage:

Study the information carefully and answer the questions given below.

There is $3*5$ matrix which can produce signals which in turn help in the illumination of some bulbs. The row of the matrix are denoted by @, % and # from bottom to top and

the columns are denoted by the alphabets A, B, C D and E from left to right.

@ row contains number which are consecutive multiple of 9, starting from 27 (from left to right).

% row contains number which are consecutive multiple of 13, starting from 26 (from left to right).

row contains number which are consecutive multiple of 17, starting from 17 (from left to right).

The matrix helps in producing signals which can be either a single string of number X- or two-line string X and Y.

There are 4 lights P, Q, R and S. Based on the outcome of the strings mentioned above one of the light blinks.

Condition for blink:

1. If the outcome is below 78, then P will blink
2. If outcome range is 78-100, then Q blinks
3. If outcome range is 100-201, then R blinks
4. If outcome is greater than 201, then S blinks

For outcome of the string:

1. If the string has all odd numbers, then outcome of the string is obtained by adding all the ten's place of the two-digit numbers.
2. If an even number followed by an odd prime number then the one's places of all the two-digit numbers are deleted and, tenth place are multiplied to get the outcome
3. If the string contains two even numbers, then the outcome of the string is obtained by the subtraction of sum of even number and sum of odd numbers.
4. If no above logic is followed, then simple outcome is addition of the numbers.

If $X = \%B @C @B$ & $Y = \%E \#A$, and the outcome will be $X+Y$ then which bulb blink? **(2 Mark)**

- A. R
- B. Q
- C. P
- D. S
- E. Either R or S

Q.10 **Essay** : 6-10):Passage:

Study the information carefully and answer the questions given below.

There is 3×5 matrix which can produce signals which in turn help in the illumination of some bulbs. The row of the matrix are denoted by @, % and # from bottom to top and

the columns are denoted by the alphabets A, B, C D and E from left to right.

@ row contains number which are consecutive multiple of 9, starting from 27 (from left to right).

% row contains number which are consecutive multiple of 13, starting from 26 (from left to right).

row contains number which are consecutive multiple of 17, starting from 17 (from left to right).

The matrix helps in producing signals which can be either a single string of number X- or two-line string X and Y.

There are 4 lights P, Q, R and S. Based on the outcome of the strings mentioned above one of the light blinks.

Condition for blink:

1. If the outcome is below 78, then P will blink
2. If outcome range is 78-100, then Q blinks
3. If outcome range is 100-201, then R blinks
4. If outcome is greater than 201, then S blinks

For outcome of the string:

1. If the string has all odd numbers, then outcome of the string is obtained by adding all the ten's place of the two-digit numbers.
2. If an even number followed by an odd prime number then the one's places of all the two-digit numbers are deleted and, tenth place are multiplied to get the outcome
3. If the string contains two even numbers, then the outcome of the string is obtained by the subtraction of sum of even number and sum of odd numbers.
4. If no above logic is followed, then simple outcome is addition of the numbers.

If $X = @C@B@D\#A\%E$, then which bulb blink? **(2 Mark)**

- A. P
- B. Q
- C. S
- D. R
- E. Either R or S

Q.11 **Essay** : 11-12):Passage:

In each of the following questions, a statement is given, followed by two conclusions. You have to assume everything in the statement to be true, then consider the two conclusions together and decide which of them can be logically follows beyond a reasonable doubt from the information given in the

statement. Give answer

Statement: The decision of Microsoft to spend over \$26 billion to buy LinkedIn, the “world’s largest professional network”, is an earnest attempt by the company founded by Bill Gates for continued relevance in a space that it once dominated, to the point of being a monopoly. That space - the technology sector - is nothing like what it was in the 1980s and 1990s, when Microsoft ruled. Over the last decade and a half, the rise of the Internet, social media and smart phones have dramatically altered the contours of this space, giving rise to new and more powerful companies such as Google, facebook and Amazon.

Conclusions:

I. Virtual space as of today belong to search engines. Facebook is nothing more but a personalized search engine. For Microsoft, understanding this is the key factor; a \$26 billion deal to buy LinkedIn may not result in substantial returns unless it is made relevant to common people and not just professionals.

II. The decision of Microsoft is somewhat a pragmatism acquisition and fruitful for its software business with the help of professionals linked in with LinkedIn on a global scale. Indeed it is a better buy than Nokia which is a shine losing brand in the midst of market flooding smart phone brands. **(1 Mark)**

- A. if only conclusion I follows,
- B. if only conclusion II follows,
- C. if either I or II follows,
- D. if neither I nor II follows,
- E. if both I and II follow

Q.12 **Essay** : 11-12):Passage:

In each of the following questions, a statement is given, followed by two conclusions. You have to assume everything in the statement to be true, then consider the two conclusions together and decide which of them can be logically follows beyond a reasonable doubt from the information given in the statement. Give answer

Statement: Novak Djokovic has completed the Career Grand Slam - winning each of the four majors at least once - become easier in men’s tennis, with the increased homogeneity of surfaces and playing styles. He became the third man to hold all four major titles at once and the first ever to do so on three different surfaces (hard court,

clay and grass). It also made him the sixth man to win grand slam singles titles on clay, grass and hard courts.

Conclusions:

I. Novak Djokovic is at the cusp of making another history. In the upcoming times, he has the opportunity to win the remaining two Grand Slams as well as the gold medal at Rio Olympics.

II. There is a lot of hard work and regimented life style behind his consistent performances on the tennis court. He is a product of immense talent, total dedication, rigors of daily training under equally gifted coaches and an insatiable hunger to achieve more. **(1 Mark)**

- A. if only conclusion I follows,
- B. if only conclusion II follows,
- C. if either I or II follows,
- D. if neither I nor II follows,
- E. if both I and II follow

Q.13 **Essay** : 13-17):Passage:

Study the information given below and answer the given questions.

16 boxes are placed in a 4*4 matrix formation. All of them are placed from bottom to top. Box J is to the west of A but J is to the east of P. Box O is placed exactly between box E and box A in a column. Box E is placed above A. Box G is placed at the bottom. Box C is placed immediately above H in a column. Box B is to immediate west of F. Box A is not placed at the bottom. Box L is placed above N in a column. Box P is placed below box B in a column. Box I is placed at the top and immediate east of box M. Box B is not in same row as E. Box C is to the east of B. Less than three boxes are there to the west of O. Box K is not in the west of G. Box D is not placed in the same column as M. Box K is not placed below F in a column.

Which of the following box is placed below E in a column? **(1 Mark)**

- A. Box G
- B. Box P
- C. Box C
- D. Box N
- E. Box K

Q.14 **Essay** : 13-17):Passage:

Study the information given below and answer the given questions.

16 boxes are placed in a 4*4 matrix formation. All of them are placed from bottom to top. Box J is to the west of A but J is to the east of P. Box O is placed exactly between box E and box A in a column. Box E is placed above A. Box G is placed at the bottom. Box C is placed immediately above H in a column. Box B is to immediate west of F. Box A is not placed at the bottom. Box L is placed above N in a column. Box P is placed below box B in a column. Box I is placed at the top and immediate east of box M. Box B is not in same row as E. Box C is to the east of B. Less than three boxes are there to the west of O. Box K is not in the west of G. Box D is not placed in the same column as M. Box K is not placed below F in a column.

Four of the following are alike in a certain way so form a group, which of the following does not belong to that group? **(1 Mark)**

- A. Box I and D
- B. Box B and G
- C. Box C and N
- D. Box E and K
- E. Box P and H

Q.15 **Essay** : 13-17):Passage:

Study the information given below and answer the given questions.

16 boxes are placed in a 4*4 matrix formation. All of them are placed from bottom to top. Box J is to the west of A but J is to the east of P. Box O is placed exactly between box E and box A in a column. Box E is placed above A. Box G is placed at the bottom. Box C is placed immediately above H in a column. Box B is to immediate west of F. Box A is not placed at the bottom. Box L is placed above N in a column. Box P is placed below box B in a column. Box I is placed at the top and immediate east of box M. Box B is not in same row as E. Box C is to the east of B. Less than three boxes are there to the west of O. Box K is not in the west of G. Box D is not placed in the same column as M. Box K is not placed below F in a column.

Which of the following box is placed immediately above box D? **(1 Mark)**

- A. Box F
- B. Box L
- C. Box M

- D. Box J
- E. None of these

Q.16 **Essay** : 13-17):Passage:

Study the information given below and answer the given questions.

16 boxes are placed in a 4*4 matrix formation. All of them are placed from bottom to top. Box J is to the west of A but J is to the east of P. Box O is placed exactly between box E and box A in a column. Box E is placed above A. Box G is placed at the bottom. Box C is placed immediately above H in a column. Box B is to immediate west of F. Box A is not placed at the bottom. Box L is placed above N in a column. Box P is placed below box B in a column. Box I is placed at the top and immediate east of box M. Box B is not in same row as E. Box C is to the east of B. Less than three boxes are there to the west of O. Box K is not in the west of G. Box D is not placed in the same column as M. Box K is not placed below F in a column.

Which of the following box is placed immediately west of box C? **(1 Mark)**

- A. Box B
- B. Box A
- C. Box O
- D. Box E
- E. None of these

Q.17 **Essay** : 13-17):Passage:

Study the information given below and answer the given questions.

16 boxes are placed in a 4*4 matrix formation. All of them are placed from bottom to top. Box J is to the west of A but J is to the east of P. Box O is placed exactly between box E and box A in a column. Box E is placed above A. Box G is placed at the bottom. Box C is placed immediately above H in a column. Box B is to immediate west of F. Box A is not placed at the bottom. Box L is placed above N in a column. Box P is placed below box B in a column. Box I is placed at the top and immediate east of box M. Box B is not in same row as E. Box C is to the east of B. Less than three boxes are there to the west of O. Box K is not in the west of G. Box D is not placed in the same column as M. Box K is not placed below F in a column.

Which of the following box is placed exactly between M and P in a column? **(1 Mark)**

- A. Box H
- B. Box F and J
- C. Box B
- D. Box N
- E. None of these

Q.18 **Essay** : 18-22):Passage:

Study the following information to answer the given questions.

A word and number arrangement machine when given an input of words and numbers rearranges them following a particular rule. The following is an illustration of input and rearrangement.

Input: 52 peak 91 snow freeze 46 cold 15 high 31 73 trek

Step I: 15 52 peak snow freeze 46 cold high 31 73 trek 91

Step II: 15 31 52 peak snow freeze 46 cold high trek 73 91

Step III: 15 31 46 peak snow freeze cold high trek 52 73 91

Step IV: 15 31 46 cold peak snow freeze high trek 52 73 91

Step V: 15 31 46 cold freeze peak high snow trek 52 73 91

Step VI: 15 31 46 cold freeze high peak snow trek 52 73 91

Step VI is the last step of the rearrangement. As per the rules followed in the above steps, find out in each of the following questions the appropriate steps for the given input. Input for the questions.

Input: 67 hot sun 19 best 83 ice 49 ace 77 cut 37

How many steps would be needed to complete the arrangement? **(1 Mark)**

- A. X
- B. VIII
- C. IX
- D. VI
- E. None of these

Q.19 **Essay** : 18-22):Passage:

Study the following information to answer the given questions.

A word and number arrangement machine when given an input of words and numbers rearranges them following a particular rule. The following is an illustration of input

and rearrangement.

Input: 52 peak 91 snow freeze 46 cold 15 high 31 73 trek

Step I: 15 52 peak snow freeze 46 cold high 31 73 trek 91

Step II: 15 31 52 peak snow freeze 46 cold high trek 73 91

Step III: 15 31 46 peak snow freeze cold high trek 52 73 91

Step IV: 15 31 46 cold peak snow freeze high trek 52 73 91

Step V: 15 31 46 cold freeze peak high snow trek 52 73 91

Step VI: 15 31 46 cold freeze high peak snow trek 52 73 91

Step VI is the last step of the rearrangement. As per the rules followed in the above steps, find out in each of the following questions the appropriate steps for the given input. Input for the questions.

Input: 67 hot sun 19 best 83 ice 49 ace 77 cut 37

Which step number would be the following output?

19 37 49 ace best hot cut ice sun 67 77 83 **(1 Mark)**

- A. II
- B. VI
- C. V
- D. IV
- E. None of these

Q.20 **Essay** : 18-22):Passage:

Study the following information to answer the given questions.

A word and number arrangement machine when given an input of words and numbers rearranges them following a particular rule. The following is an illustration of input and rearrangement.

Input: 52 peak 91 snow freeze 46 cold 15 high 31 73 trek

Step I: 15 52 peak snow freeze 46 cold high 31 73 trek 91

Step II: 15 31 52 peak snow freeze 46 cold high trek 73 91

Step III: 15 31 46 peak snow freeze cold high trek 52 73 91

Step IV: 15 31 46 cold peak snow freeze high trek 52 73 91

Step V: 15 31 46 cold freeze peak high snow trek 52 73 91

Step VI: 15 31 46 cold freeze high peak snow trek 52 73 91

Step VI is the last step of the rearrangement. As per the rules followed in the above steps, find out in each of the following questions the appropriate steps for the given input. Input for the questions.

Input: 67 hot sun 19 best 83 ice 49 ace 77 cut 37

Which of the following would be Step I? **(1 Mark)**

- A. 19 37 49 hot sun best ice ace cut 67 77 83
- B. 83 67 hot sun best ice 49 ace 77 cut 37 19
- C. 19 67 ace best hot sun ice 49 77 cut 37 83
- D. 19 67 hot sun best ice 49 ace 77 cut 37 83
- E. None of these

Q.21 **Essay** : 18-22):Passage:

Study the following information to answer the given questions.

A word and number arrangement machine when given an input of words and numbers rearranges them following a particular rule. The following is an illustration of input and rearrangement.

Input: 52 peak 91 snow freeze 46 cold 15 high 31 73 trek

Step I: 15 52 peak snow freeze 46 cold high 31 73 trek 91

Step II: 15 31 52 peak snow freeze 46 cold high trek 73 91

Step III: 15 31 46 peak snow freeze cold high trek 52 73 91

Step IV: 15 31 46 cold peak snow freeze high trek 52 73 91

Step V: 15 31 46 cold freeze peak high snow trek 52 73 91

Step VI: 15 31 46 cold freeze high peak snow trek 52 73 91

Step VI is the last step of the rearrangement. As per the rules followed in the above steps, find out in each of the following questions the appropriate steps for the given input. Input for the questions.

Input: 67 hot sun 19 best 83 ice 49 ace 77 cut 37

Which of the following would be the final arrangement? **(1 Mark)**

- A. 67 77 83 ace best hot ice sun 19 37 49
- B. 19 37 49 ace best cut hot ice sun 67 77 83
- C. 19 37 49 67 77 83 ace best cut hot ice sun
- D. 19 37 49 ace ice best cut hot sun 67 77 83
- E. None of these

Q.22 **Essay** : 18-22):Passage:

Study the following information to answer the given questions.

A word and number arrangement machine when given an input of words and numbers rearranges them following a particular rule. The following is an illustration of input

and rearrangement.

Input: 52 peak 91 snow freeze 46 cold 15 high 31 73 trek

Step I: 15 52 peak snow freeze 46 cold high 31 73 trek 91

Step II: 15 31 52 peak snow freeze 46 cold high trek 73 91

Step III: 15 31 46 peak snow freeze cold high trek 52 73 91

Step IV: 15 31 46 cold peak snow freeze high trek 52 73 91

Step V: 15 31 46 cold freeze peak high snow trek 52 73 91

Step VI: 15 31 46 cold freeze high peak snow trek 52 73 91

Step VI is the last step of the rearrangement. As per the rules followed in the above steps, find out in each of the following questions the appropriate steps for the given input. Input for the questions.

Input: 67 hot sun 19 best 83 ice 49 ace 77 cut 37

In Step IV, which of the following word/number would be on 7th position (from the right)? **(1 Mark)**

- A. Sun
- B. Best
- C. 67
- D. Cut
- E. None of these

Q.23 **Essay** : 23-25):Passage:

Study the following information carefully to answer the given questions.

M, N, O, P, Q, R, S and T are eight students in the class. They all are overweighted. They join a Fitness club. Different types of high protein diets are referred to them by the Gym trainer. But each of them likes only one of them. Eggs, Banana and milk are referred to them.

Three of them like Banana , two of them like Egg and remaining of three like Milk. Each one of them has a different weight.

The heaviest does not likes Egg and the lightest does not likes Banana. R is heavier than M and P, but lighter than T and N. Q, who does not likes Banana, is heavier than N and is the second heaviest. S is lighter than P but heavier than M.T, who is fourth heaviest, likes Milk along with P.S does not likes Banana and Egg. N does not likes Egg.

Who is the heaviest among them? **(1 Mark)**

- A. Q
- B. N
- C. O
- D. P
- E. None of these

Q.24 **Essay** : 23-25):Passage:

Study the following information carefully to answer the given questions.

M, N, O, P, Q, R, S and T are eight students in the class. They all are overweighted. They join a Fitness club. Different types of high protein diets are referred to them by the Gym trainer. But each of them likes only one of them. Eggs, Banana and milk are referred to them.

Three of them like Banana , two of them like Egg and remaining of three like Milk. Each one of them has a different weight.

The heaviest does not likes Egg and the lightest does not likes Banana. R is heavier than M and P, but lighter than T and N. Q, who does not likes Banana, is heavier than N and is the second heaviest. S is lighter than P but heavier than M.T, who is fourth heaviest, likes Milk along with P.S does not likes Banana and Egg. N does not likes Egg.

Who among the following is lighter than P? **(1 Mark)**

- A. O
- B. S
- C. Q
- D. R
- E. None of these

Q.25 **Essay** : 23-25):Passage:

Study the following information carefully to answer the given questions.

M, N, O, P, Q, R, S and T are eight students in the class. They all are overweighted. They join a Fitness club. Different types of high protein diets are referred to them by the Gym trainer. But each of them likes only one of them. Eggs, Banana and milk are referred to them.

Three of them like Banana , two of them like Egg and remaining of three like Milk. Each one of them has a different weight.

The heaviest does not like Egg and the lightest does not like Banana. R is heavier than M and P, but lighter than T and N. Q, who does not like Banana, is heavier than N and is the second heaviest. S is lighter than P but heavier than M. T, who is fourth heaviest, likes Milk along with P. S does not like Banana and Egg. N does not like Egg.

Which of the following pairs likes Egg? **(1 Mark)**

- A. RS
- B. MO
- C. OQ
- D. NQ
- E. MQ

Q.26 **Statement:** Govt. has taken decision in many blocks of country that the construction work of highway is given to the private firms of builder operator transfer on the basis of action.

Assumptions:

- I. Large number of private firms will not answer in the respect of Govt. action.
- II. Many private firms of our country are capable to complete the construction work of highway within given time period.
- III. It may be that private firms get financial profit due to govt. builder operated proposed schemes. **(1 Mark)**

- A. Only I and II are implicit.
- B. Only II and III are implicit.
- C. Only II is implicit.
- D. Only I and III are implicit.
- E. None of these

Q.27 **Statement:** Through interest rate subvention scheme government of India will provide crop loan to farmers at just 4%.

Which of the following can be **concluded** from the above statement? **(1 Mark)**

- A. Financial condition of farmers will improve
- B. Repayment of loan will be done timely by the farmers.
- C. Small and marginal farmers will be most benefited from this scheme.
- D.

Farmers will have to pay less interest on their loan.

E. Only (a) and (d)

Q.28 **Essay** : 28-29):Passage:

Study the following information carefully and answer the given questions.

There are six members in a family i.e. A, F, D, B, C, and G. Among them only one married couple and only two males. A, who is unmarried and F are siblings. B's husband has only one child. G is niece of F and D is father of F. C is the only son of D.

How is F related to A's niece? **(1 Mark)**

- A. Son
- B. Father
- C. Mother
- D. Daughter
- E. None of these

Q.29 **Essay** : 28-29):Passage:

Study the following information carefully and answer the given questions.

There are six members in a family i.e. A, F, D, B, C, and G. Among them only one married couple and only two males. A, who is unmarried and F are siblings. B's husband has only one child. G is niece of F and D is father of F. C is the only son of D.

Who is daughter-in-law of G's grandfather? **(1 Mark)**

- A. A
- B. B
- C. F
- D. Cannot be determined
- E. None of these

Q.30 There are six members in a family i.e. P, Q, R, S, T, and U. There is only one female in a family. Among them only one married couple. U has only one child, whose

father-in-law is P. T is grandchild of P. U is paternal grandparent of T. S is brother-in-law of R and R has no child. How is Q related to U? **(1 Mark)**

- A. Daughter-in-law
- B. Son-in-law
- C. Mother of U's grandson
- D. Both (a) and (c)
- E. None of these

Q.31 **Essay** : 31-35):Passage:

Study the following information to answer the given questions:

In a certain code,
'commit also make policy' is written as '

What is the code for 'mild' ? **(2 Mark)**

- A. @w5
- B.
- C.
- D.
- E. Can't be determined

Q.32 **Essay** : 31-35):Passage:

Study the following information to answer the given questions:

In a certain code,
'commit also make policy' is written as '

What does '#e6 #e5 @04' stand for? **(2 Mark)**

- A. also make course
- B. craze also course
- C. commit course mobile
- D. artist mild craze
- E. Either "also make course" or "prize also course"

Q.33 **Essay** : 31-35):Passage:

Study the following information to answer the given questions:

In a certain code,
'commit also make policy' is written as '

Which could be the code for 'peace protect pump'? **(2 Mark)**

- A. #t4
- B. !e4 !r4 !e2
- C. !p4 @w3 !r4
- D. !e5 !t7 !p4
- E. None of these

Q.34 **Essay** : 31-35):Passage:

Study the following information to answer the given questions:

In a certain code,
'commit also make policy' is written as '

'!l8 %n6 @e7' could be a code for which of the following?**(2 Mark)**

- A. mobile charge victory
- B. peaceful modern advance
- C. against modern effort
- D. mild peaceful west
- E. None of these

Q.35 **Essay** : 31-35):Passage:

Study the following information to answer the given questions:

In a certain code,
'commit also make policy' is written as '

Which of the following is the code for 'anger prize commit'? **(2 Mark)**

- A. !e5
- B. !e5 @r5 #t6
- C. @r5 #e6 #t6
- D. #t6 @o4
- E. None of thes

Q.36 **Essay** : 36-40):Passage:

Read the following information carefully and answer the questions given below:

Twelve persons i.e. O, P, Q, R, S, T, X, W, U, V, Y and Z who all born on different dates in four different months i.e. January, June, September and December but not necessarily in the same order. Only three persons born in any of the month. Any of the three-person born in June will have birth date after the birth date of each of three person who are born in January and before the birth date of each of the three person born in September and same will follow for the persons who were born in the September and December month as well. No two persons were born on same date (for ex-only one person is born on 2). Only one person born between R and X but none of them born in the month having 31 days. Only three persons born between U and S but neither of them born in the same month as R and X. The one who born immediately before X born on 15. The one who born immediately before U born on 18. The one who born on 15 does not born in a month having 31 days. P born on 26th. Only Z born in between P and S and Z born on an even date. Y is born on an odd date after X but before P. V born on an even date which is greater than 16 but before Y. The one who born last born on last date of the month. No one who born in December born on a date which is a multiple of 5. X was born on an even date. U born on an odd date which is not a multiple of 3. W is born on 5. No one is born on 4 and 10. R born on an even date which is not a multiple of 7. T born immediately before Q and both of them born on even date. V born on the date which is not immediately before U.

How many persons born after R but before the one who born on 25? **(2 Mark)**

- A. Two
- B. Three
- C. More than Four
- D. One
- E. Four

Q.37 **Essay** : 36-40):Passage:

Read the following information carefully and answer the questions given below:

Twelve persons i.e. O, P, Q, R, S, T, X, W, U, V, Y and Z who all born on different dates in four different months i.e. January, June, September and December but not necessarily in the same order. Only three persons born in any of the month. Any of the

three-person born in June will have birth date after the birth date of each of three person who are born in January and before the birth date of each of the three person born in September and same will follow for the persons who were born in the September and December month as well. No two persons were born on same date (for ex-only one person is born on 2). Only one person born between R and X but none of them born in the month having 31 days. Only three persons born between U and S but neither of them born in the same month as R and X. The one who born immediately before X born on 15. The one who born immediately before U born on 18. The one who born on 15 does not born in a month having 31 days. P born on 26th. Only Z born in between P and S and Z born on an even date. Y is born on an odd date after X but before P. V born on an even date which is greater than 16 but before Y. The one who born last born on last date of the month. No one who born in December born on a date which is a multiple of 5. X was born on an even date. U born on an odd date which is not a multiple of 3. W is born on 5. No one is born on 4 and 10. R born on an even date which is not a multiple of 7. T born immediately before Q and both of them born on even date. V born on the date which is not immediately before U.

Who among the following pair of persons born in the same month? **(2 Mark)**

- A. W and V
- B. V and P
- C. Q and U
- D. W and R
- E. V and Y

Q.38 **Essay** : 36-40):Passage:

Read the following information carefully and answer the questions given below:

Twelve persons i.e. O, P, Q, R, S, T, X, W, U, V, Y and Z who all born on different dates in four different months i.e. January, June, September and December but not necessarily in the same order. Only three persons born in any of the month. Any of the three-person born in June will have birth date after the birth date of each of three person who are born in January and before the birth date of each of the three person born in September and same will follow for the persons who were born in the September and December month as well. No two persons were born on same date (for ex-only one person is born on 2). Only one person born between R and X but none of them born in the month having 31 days. Only three persons born between U and S but neither of them born in the same month as R and X. The one who born immediately

before X born on 15. The one who born immediately before U born on 18. The one who born on 15 does not born in a month having 31 days. P born on 26th. Only Z born in between P and S and Z born on an even date. Y is born on an odd date after X but before P. V born on an even date which is greater than 16 but before Y. The one who born last born on last date of the month. No one who born in December born on a date which is a multiple of 5. X was born on an even date. U born on an odd date which is not a multiple of 3. W is born on 5. No one is born on 4 and 10. R born on an even date which is not a multiple of 7. T born immediately before Q and both of them born on even date. V born on the date which is not immediately before U.

Who among the following born immediately after Q? **(2 Mark)**

- A. U
- B. W
- C. S
- D. R
- E. None of these

Q.39 **Essay** : 36-40):Passage:

Read the following information carefully and answer the questions given below:

Twelve persons i.e. O, P, Q, R, S, T, X, W, U, V, Y and Z who all born on different dates in four different months i.e. January, June, September and December but not necessarily in the same order. Only three persons born in any of the month. Any of the three-person born in June will have birth date after the birth date of each of three person who are born in January and before the birth date of each of the three person born in September and same will follow for the persons who were born in the September and December month as well. No two persons were born on same date (for ex-only one person is born on 2). Only one person born between R and X but none of them born in the month having 31 days. Only three persons born between U and S but neither of them born in the same month as R and X. The one who born immediately before X born on 15. The one who born immediately before U born on 18. The one who born on 15 does not born in a month having 31 days. P born on 26th. Only Z born in between P and S and Z born on an even date. Y is born on an odd date after X but before P. V born on an even date which is greater than 16 but before Y. The one who born last born on last date of the month. No one who born in December born on a date which is a multiple of 5. X was born on an even date. U born on an odd date which is not a multiple of 3. W is born on 5. No one is born on 4 and 10. R born on an even date

which is not a multiple of 7. T born immediately before Q and both of them born on even date. V born on the date which is not immediately before U.

X born on which of the following date? **(2 Mark)**

- A. 16th
- B. 24th
- C. 20th
- D. 26th
- E. None of these

Q.40 **Essay** : 36-40):Passage:

Read the following information carefully and answer the questions given below:

Twelve persons i.e. O, P, Q, R, S, T, X, W, U, V, Y and Z who all born on different dates in four different months i.e. January, June, September and December but not necessarily in the same order. Only three persons born in any of the month. Any of the three-person born in June will have birth date after the birth date of each of three person who are born in January and before the birth date of each of the three person born in September and same will follow for the persons who were born in the September and December month as well. No two persons were born on same date (for ex-only one person is born on 2). Only one person born between R and X but none of them born in the month having 31 days. Only three persons born between U and S but neither of them born in the same month as R and X. The one who born immediately before X born on 15. The one who born immediately before U born on 18. The one who born on 15 does not born in a month having 31 days. P born on 26th. Only Z born in between P and S and Z born on an even date. Y is born on an odd date after X but before P. V born on an even date which is greater than 16 but before Y. The one who born last born on last date of the month. No one who born in December born on a date which is a multiple of 5. X was born on an even date. U born on an odd date which is not a multiple of 3. W is born on 5. No one is born on 4 and 10. R born on an even date which is not a multiple of 7. T born immediately before Q and both of them born on even date. V born on the date which is not immediately before U.

Z was born on which of the following date? **(2 Mark)**

- A. 28th
- B. 24th

- C. 20th
- D. 26th
- E. None of these

Q.41 Statement:

The Indian Railways has tied up with Tata Consultancy Services to pilot a system to conduct its recruitment exams online, as the country's largest employer looks to introduce transparency into its operations.

Which of the following **assumptions** is implicit in the given information? (An assumption is something supposed or taken for granted). **(1 Mark)**

- A. Government jobs are the ambition of every youth in the country.
- B. Corruption was never an issue in railway recruitment.
- C. Online examination will reduce corruption and bring transparency.
- D. Cheating in examinations will be wiped out.
- E. All examinations for major recruitments in the country will be conducted online.

Q.42 Statement:

Next time, when you lose your baggage or meet with an accident while travelling by train, you need not run from pillar to post and wait for years before the cheque lands at your door.

Which of the following can be **inferred** from the given information? (An inference is something that is not directly stated but can be inferred from the given information.) **(1 Mark)**

- A. There will be quick settlement of claims into the customer's account.
- B. All travellers' details will be linked with Aadhaar card.
- C. The loss will be covered by any insurance company through railways.
- D. There will be direct settlement of claim by the IRCTC.
- E. None of these

Q.43 Which memory appears to exist as main storage although most of it is supported by data held in secondary storage? **(1 Mark)**

- A. Core memory
- B. Virtual memory

- C. RAM
- D. Dynamic memory
- E. None of the above

Q.44 Which among the following options is the application that combines text, sound, graphics, motion video, and/ or animation? **(1 Mark)**

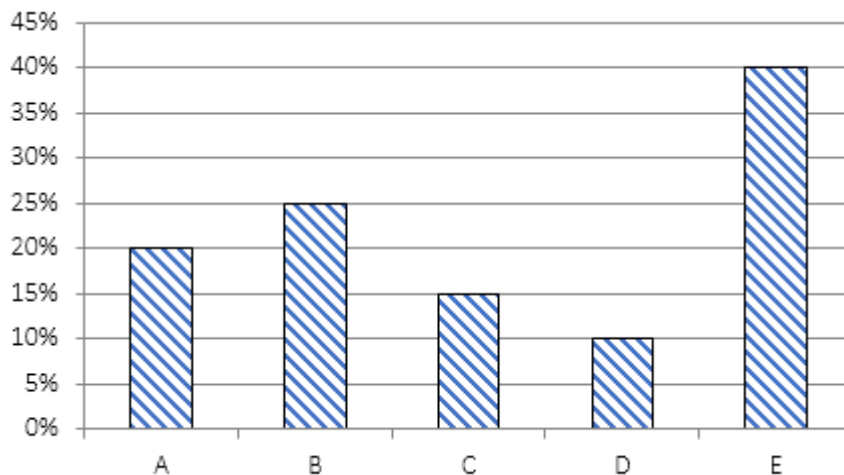
- A. Multimedia
- B. Minimedias
- C. Videoscapes
- D. Motionware
- E. Maxomedia

Q.45 FORTRAN is a programming language. It is more suitable for _____. **(1 Mark)**

- A. business applications
- B. marketing applications
- C. scientific applications
- D. statically calculative applications
- E. None of these

Q.46 **Essay** : 46-50):Passage:

Bar graph given below shows interest rate offered in different schemes. Study the data carefully and answer the following question.



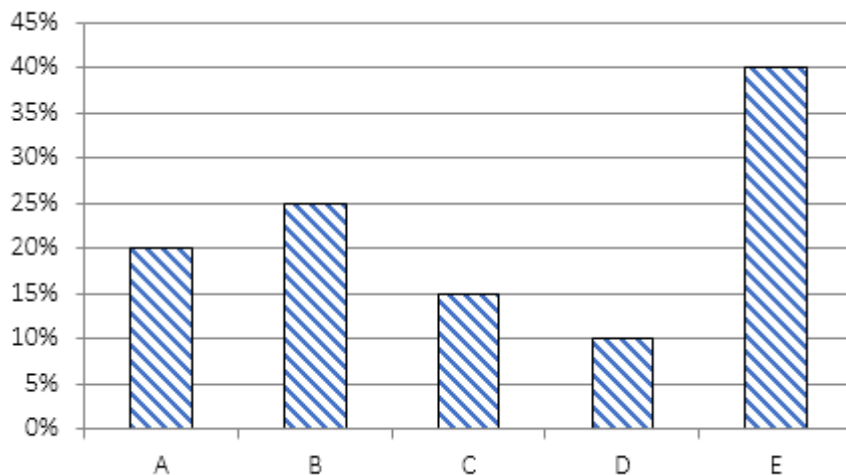
Amit and Sandeep invested in scheme A and scheme B respectively in the ratio 2 : 3. After two years Sandeep got Rs. 2480 more than Amit. If scheme A offered C.I. and scheme B offered SI, then find the total amount earned by both after 2 years.

(2 Mark)

- A. Rs. 19,520
- B. Rs. 29,520
- C. Rs. 29,250
- D. Rs. 29,220
- E. Rs. 29,550

Q.47 **Essay** : 46-50):Passage:

Bar graph given below shows interest rate offered in different schemes. Study the data carefully and answer the following question.

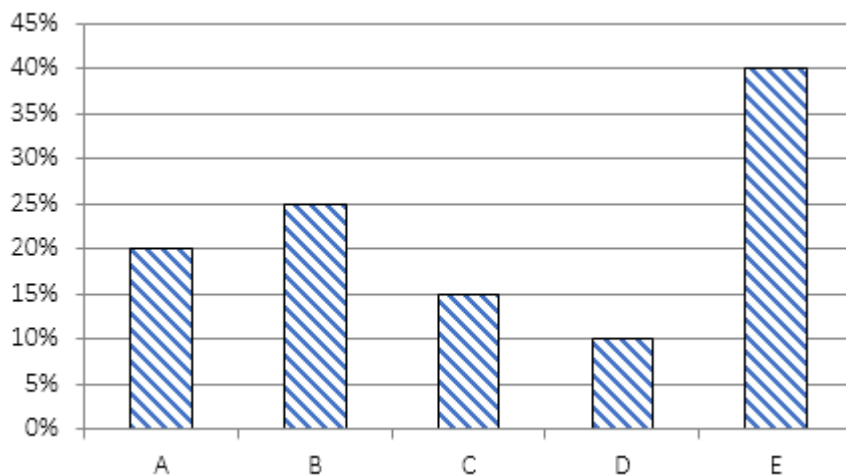


A man invested Rs. 'X' amount in scheme A and Rs. 'Y' amount in scheme 'E'. After two years he got equal interest from both schemes. If both schemes offered CI, then find X : Y ? (2 Mark)

- A. 49 : 36
- B. 24 : 11
- C. 7 : 6
- D. 2 : 1
- E. None of the given option

Q.48 **Essay** : 46-50):Passage:

Bar graph given below shows interest rate offered in different schemes. Study the data carefully and answer the following question.

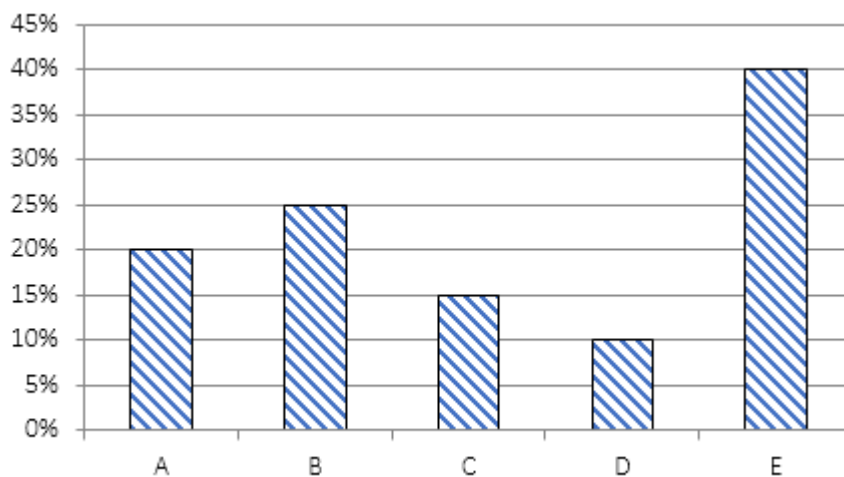


Veer invested Rs. X in scheme 'C' for two years, then he spend total amount (principal + interest) which he get from scheme C in scheme 'D' for 3 years. Scheme 'C' offered at S.I. while scheme 'D' offered at CI. If total interest earned by him from scheme 'D' is Rs. 31,272 more than interest earned by him from scheme 'C'. Find value of '2X'. **(2 Mark)**

- A. Rs. 0.24 Lakh
- B. Rs. 6 Lakh
- C. Rs. 2.4 Lakh
- D. Rs. 4.8 Lakh
- E. Rs. 0.48 Lakh

Q.49 **Essay** : 46-50):Passage:

Bar graph given below shows interest rate offered in different schemes. Study the data carefully and answer the following question.

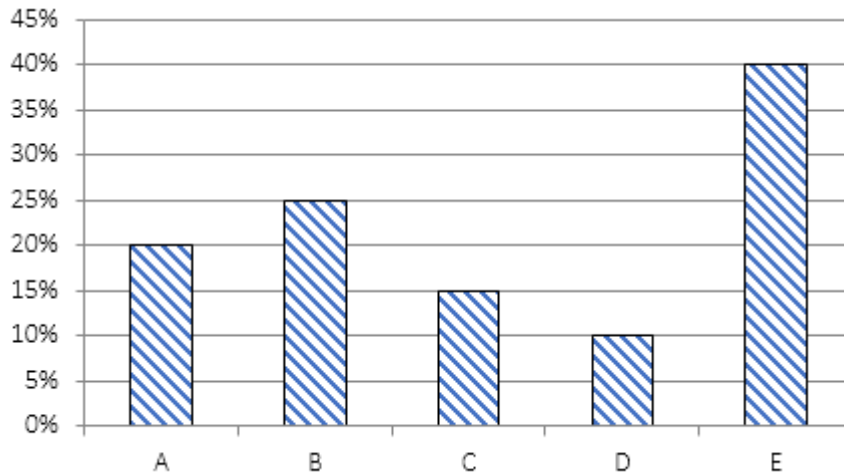


Two men invested in the rate of 8 : 5 in scheme 'B' and 'E' respectively. If both schemes offered at S.I and both men got same amount. If amount invested in scheme 'B' in for 6 years, then amount invested in scheme 'E' is for how many years? **(2 Mark)**

- A. 8 years
- B. 7.5 years
- C. 9 years
- D. 12 years
- E. 10.5 years

Q.50 **Essay** : 46-50):Passage:

Bar graph given below shows interest rate offered in different schemes. Study the data carefully and answer the following question.



A man invested in all schemes in the ratio 5 : 4 : 3 : 2 : 1 from A to E. In which scheme, he will get maximum interest after one year? **(2 Mark)**

- A. Both A and B
- B. Both A and D
- C. Both B and E
- D. None of the given option
- E. Both A and E

Q.51 **Essay** : 51-55):Passage:

What comes at the place of question marks, regarding to given pattern of series

4, 3, 8, 13, 56, 453, 7254 **(1 Mark)**

- A. 4
- B. 8
- C. 56
- D. 3
- E. 7254

Q.52 **Essay** : 51-55):Passage:

What comes at the place of questions marks, regarding to given pattern of series

5, 8, 14, 30, 50, 98, 194 **(1 Mark)**

- A. 8
- B. 14
- C. 5
- D. 98
- E. 30

Q.53 **Essay** : 51-55):Passage:

What comes at the place of questions marks, regarding to given pattern of series

30, 42, 48, 54, 63, 84, 126 **(1 Mark)**

- A. 30
- B. 48
- C. 42
- D. 84
- E. 126

Q.54 **Essay** : 51-55):Passage:

What comes at the place of questions marks, regarding to given pattern of series

240, 150, 360, 90, 450, 75, 525 **(1 Mark)**

- A. 90
- B. 150
- C. 240
- D. 75
- E. 360

Q.55 **Essay** : 51-55):Passage:

What comes at the place of questions marks, regarding to given pattern of series

255, 262, 310, 401, 539, 730, 990 **(1 Mark)**

- A. 262
- B. 310
- C. 255
- D. 539
- E. 990

Q.56 Ratio of length and speed of two trains (smaller: longer) are 7: 8 and 4: 3 respectively. Time taken by both trains to cross each other while running in opposite directions is $12\frac{6}{7}sec$ and time taken by smaller train to cross a platform having length 100 m less than the smaller train is 16 sec. Find time taken by longer train to cross that platform? **(2 Mark)**

- A. $22\frac{1}{2} sec$
- B. $23\frac{1}{3} sec$
- C. $21\frac{2}{3} sec$
- D. 20 sec
- E. None of the given options

Q.57 A and B together can finish first work in $11\frac{1}{4} days$ while A alone can do it in 25 days. Both work on second work for 'x' days and (x + 4) days with $22\frac{2}{9}\%$ more and $18\frac{2}{11}\%$ less of their respective efficiency respectively and B gets Rs 180 more wages than that of A out of total wages Rs 4140. Find the time taken by both together to complete the second work if they work with their original efficiency?

(2 Mark)

- A. $13\frac{4}{5}$ days
- B. $12\frac{1}{2}$ days
- C. $16\frac{2}{3}$ days
- D. $13\frac{1}{3}$ days
- E. 14 days

Q.58 A shopkeeper raised the marked price of an article by 125% and allows three successive discounts of 25%, 20% and $11\frac{1}{9}\%$ on new marked price and make a profit of 25%. If shopkeeper allows three successive discounts of $33\frac{1}{3}\%$, $16\frac{2}{3}\%$ and $12\frac{1}{2}\%$ on new marked price, he would have Rs 255 less profit than earlier, then find cost price of that article? **(2 Mark)**

- A. 2184 Rs.
- B. 2244 Rs.
- C. 2284 Rs.
- D. 2304 Rs.
- E. 2364 Rs.

Q.59 Bag A contains 'P' green and 18 yellow balls while bag B contains '(P + 2)' green balls and 22 more number of yellow balls than that of in bag A. Probability of selecting a green ball from bag A is $\frac{1}{12}$ more than probability of selecting a green ball from bag B. Find total number of balls in bag B. ($P < 50$) **(2 Mark)**

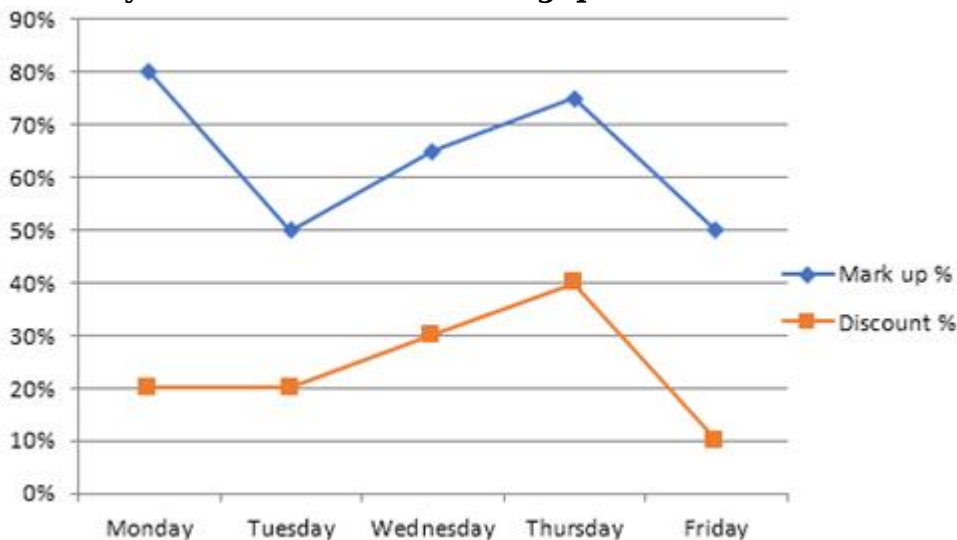
- A. 48
- B. 54
- C. 60
- D. 84
- E. 66

Q.60 Ratio of speed of boat P and Q in still water is 2 : 3. If time taken by boat 'Q' to cover a certain distance in upstream is equal to that of 'P' to cover 60% of that distance in upstream and difference of the distance covered by 'Q' and 'P' in 5hr in downstream is 60km then find ratio of speed of boat 'P' in downstream to 'Q' in upstream? (2 Mark)

- A. 3 : 2
- B. 1 : 2
- C. 1 : 1
- D. 4 : 5
- E. 5 : 4

Q.61 **Essay** : 61-65):Passage:

Line chart given below shows markup % above C.P. and discount % given on article X on five different days while table given below shows ratio between mark price of article X to mark price of article Y on these days. Study the data carefully and answer the following questions.



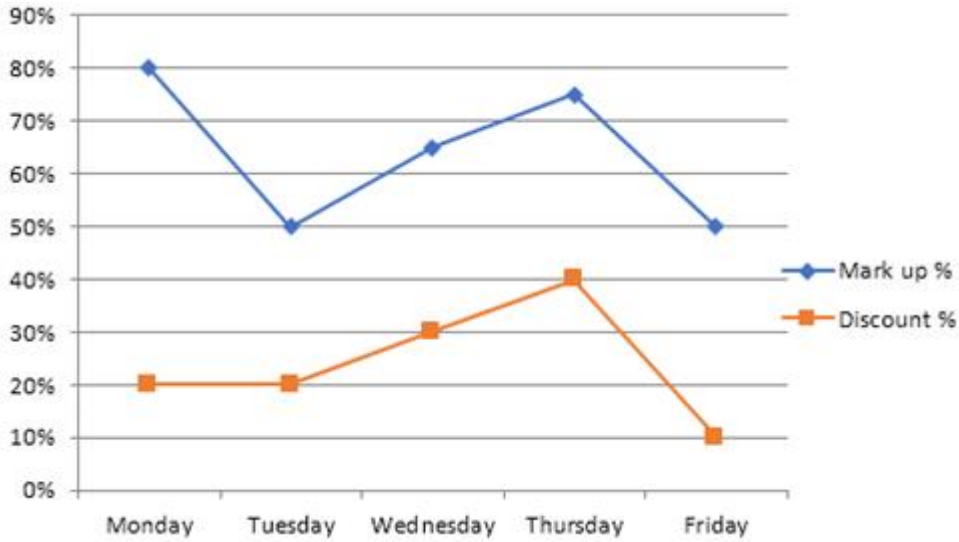
	Mark price of X : Mark price of Y
Monday	4 : 5
Tuesday	3 : 4
Wednesday	11 : 14
Thursday	7 : 9
Friday	5 : 7

Ratio between cost price of article X on Monday to Thursday is 4 : 5. Retailor earns Rs 75 profit on selling article X on Thursday. Find profit earned on selling article Y on Monday, if he give 35% discount on marked price of Y while Cost price of article X and Y is same on Monday. **(2 Mark)**

- A. Rs 465
- B. Rs 444
- C. Rs 525
- D. Rs 555
- E. Rs. 585

Q.62 **Essay** : 61-65):Passage:

Line chart given below shows markup % above C.P. and discount % given on article X on five different days while table given below shows ratio between mark price of article X to mark price of article Y on these days. Study the data carefully and answer the following questions.



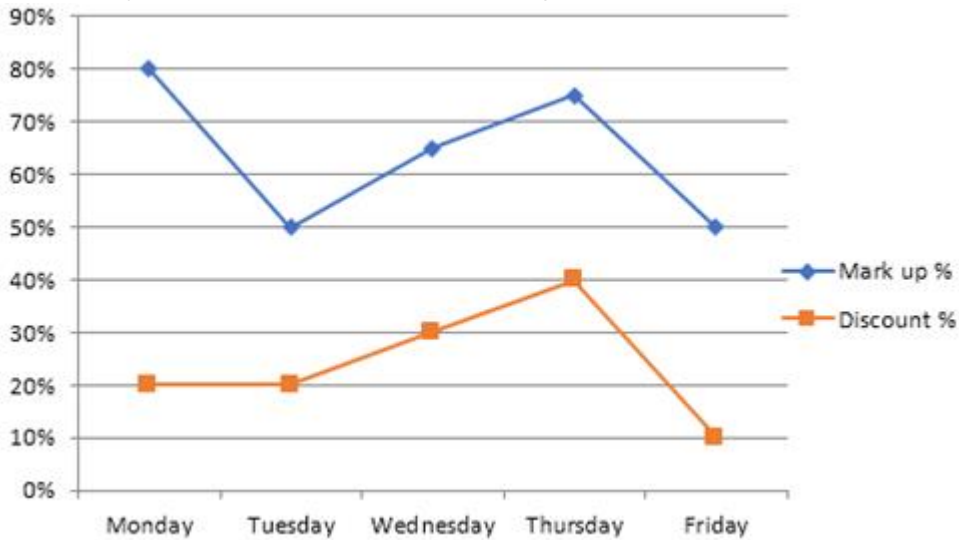
	Mark price of X : Mark price of Y
Monday	4 : 5
Tuesday	3 : 4
Wednesday	11 : 14
Thursday	7 : 9
Friday	5 : 7

On selling article X and Y on Friday, retailer earns total Rs 1430 profit. If selling price of article Y is Rs. 520 more than selling price of article X and cost price of article X and Y is same, then find discount percent offered on article Y. **(2 Mark)**

- A. $33\frac{1}{3}\%$
- B. $16\frac{2}{3}\%$
- C. $66\frac{2}{3}\%$
- D. 25%
- E. 12.5%

Q.63 Essay : 61-65):Passage:

Line chart given below shows markup % above C.P. and discount % given on article X on five different days while table given below shows ratio between mark price of article X to mark price of article Y on these days. Study the data carefully and answer the following questions.



	Mark price of X : Mark price of Y
Monday	4 : 5
Tuesday	3 : 4
Wednesday	11 : 14
Thursday	7 : 9
Friday	5 : 7

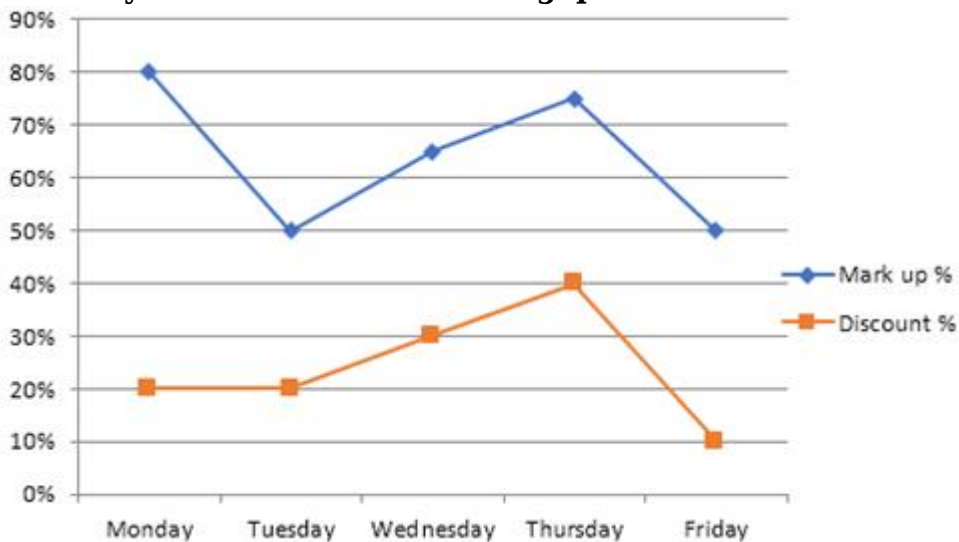
Ratio of cost price of article X to article Y on Wednesday is 3 : 4. Retailor earn 26% profit on selling article Y by giving discount of Rs. 1008. Find the difference between selling price of both articles. **(2 Mark)**

- A. Rs. 900
- B. Rs. 540
- C. Rs. 360
- D. Rs. 1080

E. Rs. 1260

Q.64 Essay : 61-65):Passage:

Line chart given below shows markup % above C.P. and discount % given on article X on five different days while table given below shows ratio between mark price of article X to mark price of article Y on these days. Study the data carefully and answer the following questions.



	Mark price of X : Mark price of Y
Monday	4 : 5
Tuesday	3 : 4
Wednesday	11 : 14
Thursday	7 : 9
Friday	5 : 7

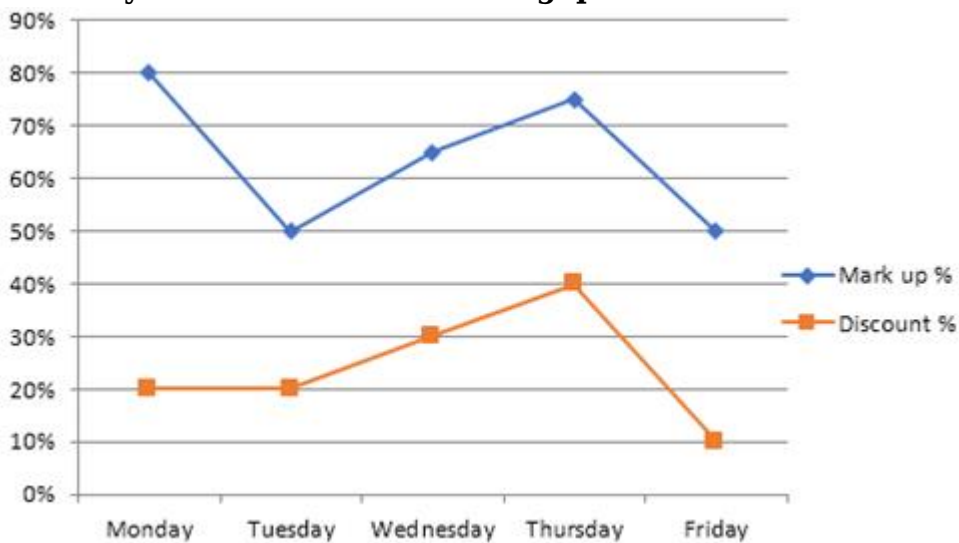
Find profit percentage earned by retailer on selling article Y on Tuesday at 40% discount if cost price of article Y is 20% less than that of cost price of article X? **(1 Mark)**

A. 60%

- B. 25%
- C. 50%
- D. 75%
- E. 100%

Q.65 Essay : 61-65):Passage:

Line chart given below shows markup % above C.P. and discount % given on article X on five different days while table given below shows ratio between mark price of article X to mark price of article Y on these days. Study the data carefully and answer the following questions.



	Mark price of X : Mark price of Y
Monday	4 : 5
Tuesday	3 : 4
Wednesday	11 : 14
Thursday	7 : 9
Friday	5 : 7

If profit earned on selling article X on Monday is 176 then find the total profit

earned by retailer on selling article X on all five days. It is given that ratio between cost price of article X on respective days starting from Monday to Friday is 1 : 2 : 3 : 4 : 5. **(2 Mark)**

- A. None of the given as option
- B. Rs. 1432
- C. Rs. 1260
- D. Rs. 1302
- E. Rs. 1424

Q.66 **Essay** : 66-70):Passage:

The following questions are accompanied by three statements (A), (B), and (C). You have to determine which statement(s) is/are sufficient necessary to answer the questions

A bag contains some balls of red, black and blue colors. 3 balls are drawn randomly from it. What is the probability that the balls drawn are of three different colors?

- (a) Ratio of black and blue colored balls is 4 : 5.
 - (b) Total number of red and black balls is 5 more than that of blue colored balls.
 - (c) Total number of balls in that bag is 35 and probability of selecting blue colored balls is $\frac{3}{7}$. **(2 Mark)**
- A. A and either B or C
 - B. Any two of them
 - C. Only A and C together
 - D. Question can't be answered even after using all the information
 - E. All statements are required

Q.67 **Essay** : 66-70):Passage:

The following questions are accompanied by three statements (A), (B), and (C). You have to determine which statement(s) is/are sufficient necessary to answer the questions

Find area of a rectangle if its perimeter is equal to the perimeter of a square.

(a) Length and breadth of the rectangle are in the ratio of 4 :3 and side of a square is half of the sum of length and breadth of that rectangle.

(b) Sum of the lengths of diagonals of the rectangle is 4m less than thrice of the side of square.

(c) Area of a square is 784 m^2 (2 Mark)

- A. Only A and B together
- B. Only A and C together
- C. All the three together
- D. Any two of the three together
- E. Either A and B together or A and C together

Q.68 **Essay** : 66-70):Passage:

The following questions are accompanied by three statements (A), (B), and (C). You have to determine which statement(s) is/are sufficient necessary to answer the questions

What is the value of a two digit number?

(a) The sum of the number and its square is 25 times the number itself.

(b) The number obtained after interchanging the digits is greater than the original number by 18.

(c) The ratio of the value of the number and the sum of the digits of that number is 4 : 1. (2 Mark)

- A. Either A alone or B and C together
- B. All the three together
- C. Any one of the three
- D. All the three together are not sufficient
- E. Either A or B alone

Q.69 **Essay** : 66-70):Passage:

The following questions are accompanied by three statements (A), (B), and (C). You have to determine which statement(s) is/are sufficient necessary to answer the questions

What is the selling price of an article if the marked price of that article is 60% above the cost price of that article?

(a) The article is sold at 12% profit and there are two successive discounts of 20% and $12\frac{1}{2}\%$ on marked price.

(b) Difference of marked price and the cost price of that article is Rs 480.

(c) The marked price is Rs.384 more than the selling price of that article. **(2**

Mark)

- A. Only B and C together
- B. Any two of three are sufficient
- C. Either A and B together or A and C together
- D. Only A and C together
- E. All the three together

Q.70 **Essay** : 66-70):Passage:

The following questions are accompanied by three statements (A), (B), and (C). You have to determine which statement(s) is/are sufficient necessary to answer the questions

Three friends A, B and C invested in a scheme. Find the profit share of A?

(a) Investment of A, B and C is in the ratio 9: 12: 10 and share of C in profit is Rs.1800

(b) A and B invested Rs.8100 and Rs.10800 for 10 months respectively and profit share of B is 100% of the profit share of C.

(c) A invested Rs 900 more than that of C and investment period of B is 10 months. **(2 Mark)**

- A. A and B together only
- B. Either A and B or A and C
- C. Any two of them
- D. Either B alone or A and C together
- E. Either A and C or B and C

Q.71 A mixture contains milk and water in the ratio of 9 : 2. 44 lit of mixture is taken out and 12 lit of water is added to it, such that ratio of milk to water becomes 3:1.

Now another mixture of 64 lit having milk and water in ratio of 3:5 is added to it. Find ratio of milk to water in the final mixture? **(2 Mark)**

- A. 32 : 17
- B. 34 : 19
- C. 7 : 4
- D. 24 : 11
- E. 33 : 19

Q.72 Ratio of present age of Simmi & Rimmi is 4 : 3 while ratio of age of Simmi 6 years later to present age of Rina is 3 : 1. Ratio of present age of Rimmi to present age of Rina is 2 : 1. Find average of present age of all the three (in years). **(1 Mark)**

- A. 37
- B. 36
- C. 32
- D. 34
- E. 38

Q.73 A shopkeeper sells an article at Rs. 720 by making a profit of $x\%$ and on interchanging selling price with cost price, it would have a loss of $y\%$. Find the selling price if an article was sold at $y\%$ profit whose cost price is Rs.720 (given $x : y = 9 : 7$) **(2 Mark)**

- A. Rs. 810
- B. Rs. 800
- C. Rs. 1100
- D. Rs. 880
- E. Rs. 660

Q.74 There are two rectangular fields of same area. The length of first rectangular field is $a\%$ less than the length of the second field and breadth of the first field is $(4a)\%$ greater than the breadth of the second field. Find the value of 'a' if a is non-zero number. **(1 Mark)**

- A. 60
- B.

- 75
- C. 80
- D. 90
- E. None of these

- Q.75 A sum is divided between Aman and Vikash in the ratio of 3 : 5. Aman purchased a motorbike from his money which depreciates 20% per annum while Vikash invested his amount in a scheme which offers compound interest at 20% per annum. By what percentage, the total sum will change after two years? **(1 Mark)**
- A. 12%
 - B. 14%
 - C. 16%
 - D. 18%
 - E. 20%

- Q.76 **Essay** : 76-80):Passage:

Data given below shows farmers producing three types of grains. Study the data carefully and answer the following questions.

Farmers producing CORN is 20% more than farmers producing RICE while number of farmers producing only CORN and only RICE is same. Ratio between farmers producing only WHEAT to farmers producing rice is 3 : 5. Farmers producing WHEAT and CORN but not RICE is twice of farmers producing only WHEAT and RICE. Number of farmers producing only RICE is half of number of farmers producing RICE. Number of farmers producing RICE and CORN is 12% of total number of farmers while number of farmers producing CORN is 48% of total number of farmers. Number of farmers producing all three grains is 16, which is 8 less than number of farmers producing only RICE and WHEAT but not CORN

Find number of farmers producing at least two types of grain are what percent of number of farmers producing at most one type of grain? **(2 Mark)**

- A. 37.5%
- B. 43.75%
- C. 50%
- D. 56.25%
- E.

62.5%

Q.77 **Essay** : 76-80):Passage:

Data given below shows farmers producing three types of grains. Study the data carefully and answer the following questions.

Farmers producing CORN is 20% more than farmers producing RICE while number of farmers producing only CORN and only RICE is same. Ratio between farmers producing only WHEAT to farmers producing rice is 3 : 5. Farmers producing WHEAT and CORN but not RICE is twice of farmers producing only WHEAT and RICE. Number of farmers producing only RICE is half of number of farmers producing RICE. Number of farmers producing RICE and CORN is 12% of total number of farmers while number of farmers producing CORN is 48% of total number of farmers. Number of farmers producing all three grains is 16, which is 8 less than number of farmers producing only RICE and WHEAT but not CORN

Number of farmers producing Sugarcane is 25% more than number of farmers producing WHEAT and CORN. Find number of farmers producing Sugarcane? **(2 Mark)**

- A. 80
- B. 50
- C. 60
- D. 45
- E. None of the given options

Q.78 **Essay** : 76-80):Passage:

Data given below shows farmers producing three types of grains. Study the data carefully and answer the following questions.

Farmers producing CORN is 20% more than farmers producing RICE while number of farmers producing only CORN and only RICE is same. Ratio between farmers producing only WHEAT to farmers producing rice is 3 : 5. Farmers producing WHEAT and CORN but not RICE is twice of farmers producing only WHEAT and RICE. Number of farmers producing only RICE is half of number of farmers producing RICE. Number of farmers producing RICE and CORN is 12% of total number of farmers while number of farmers producing CORN is 48% of total number of farmers. Number of farmers producing all three grains is 16, which is 8 less than number of farmers

producing only RICE and WHEAT but not CORN

Find what percent of farmers producing WHEAT out of total farmers? **(1 Mark)**

- A. 24%
- B. $56\frac{1}{3}\%$
- C. $53\frac{1}{3}\%$
- D. 40%
- E. 48%

Q.79 **Essay** : 76-80):Passage:

Data given below shows farmers producing three types of grains. Study the data carefully and answer the following questions.

Farmers producing CORN is 20% more than farmers producing RICE while number of farmers producing only CORN and only RICE is same. Ratio between farmers producing only WHEAT to farmers producing rice is 3 : 5. Farmers producing WHEAT and CORN but not RICE is twice of farmers producing only WHEAT and RICE. Number of farmers producing only RICE is half of number of farmers producing RICE. Number of farmers producing RICE and CORN is 12% of total number of farmers while number of farmers producing CORN is 48% of total number of farmers. Number of farmers producing all three grains is 16, which is 8 less than number of farmers producing only RICE and WHEAT but not CORN

Find total number of farmers producing either only RICE or only WHEAT? **(2 Mark)**

- A. 120
- B. 132
- C. 280
- D. None of the given options
- E. 138

Q.80 **Essay** : 76-80):Passage:

Data given below shows farmers producing three types of grains. Study the data carefully and answer the following questions.

Farmers producing CORN is 20% more than farmers producing RICE while number of farmers producing only CORN and only RICE is same. Ratio between farmers producing only WHEAT to farmers producing rice is 3 : 5. Farmers producing WHEAT and CORN but not RICE is twice of farmers producing only WHEAT and RICE. Number of farmers producing only RICE is half of number of farmers producing RICE. Number of farmers producing RICE and CORN is 12% of total number of farmers while number of farmers producing CORN is 48% of total number of farmers. Number of farmers producing all three grains is 16, which is 8 less than number of farmers producing only RICE and WHEAT but not CORN

Find the ratio between number of farmers producing only two types of grains to farmers producing all three grains? **(2 Mark)**

- A. 27 : 4
- B. None of the given options
- C. 23 : 16
- D. 23 : 8
- E. 23 : 4

Q.81 **Essay** : 81-90):Passage:

Read the following passage divided into number of paragraphs carefully and answer the questions that follow it.

Paragraph 1: Conservation reserves and community reserves in India are terms denoting protected areas of India which typically act as buffer zones to or connectors and migration corridors between established national parks, wildlife sanctuaries and reserved and protected forests of India. The Kadalundi-Vallikkunnu Community Reserve, the Kerala's first community reserve with a unique estuarial ecosystem, is in bad shape **as none cares for it**. The initial interest shown by the government and people in conserving the mangroves and mudflats of Kadalundi when the concept of community reserve was launched in 2017 no longer exists. Nothing visible has been done for the community reserve in the last few years. Moreover, a master plan prepared for the facility has been apparently dumped.

Paragraph 2: U. Kalanathan, former president of Vallikkunnu grama panchayat and an *outspoken* exponent of mangrove conservation, said that strong political interests shown by those in the managing committee had virtually killed the community reserve.

Paragraph 3: "Nothing is taking place at Kadalundi. It is indeed a sad thing. In fact, a

lot could have been done to lift this community reserve to a state where the world would take note of it," said Mr. Kalanathan. At present, a few tour operators are offering sightseeing services in country boats and homestays at Kadalundi. However, the promotion of local tourism in a small way by involving entrepreneurs should not be a mandate for the community reserve managing committee, according to Mr. Kalanathan.

Paragraph 4: Unabated dumping of waste in the ecologically fragile estuary continues to be the biggest menace for the community reserve. Some boards warning against dumping of waste at the community reserve have long disappeared.

Paragraph 5: Echoing concerns raised by scientists studying the mudflats of Kadalundi and the foraging habits of migratory birds reaching there, Mr. Kalanathan said: "Major changes have taken place in the mangrove and mudflat ecosystems of Kadalundi of late. This does not augur well for both the community reserve and thousands of migratory birds reaching the estuarial mudflats for annual summering." He demanded that the government take solid and visible action not only to conserve the mangroves of Kadalundi but also to give the community reserve a momentum.

What is the opposite of the phrase " **as none cares for it**" as mentioned in the Paragraph 1? **(1 Mark)**

- A. The people who are in the managing committee for the Kadalundi-Vallikkunnu Community Reserve don't discuss and take discussion in the managing committee based on their political and personal interests.
- B. The government and people of Kerala have been showing interest and actively committing themselves toward conserving the mangroves and mudflats of Kadalundi.
- C. Involving entrepreneurs is a mandate for the community reserve managing committee.
- D. The existing master plan prepared for the facility will be droppe
- E. None of the above

Q.82 **Essay** : 81-90):Passage:

Read the following passage divided into number of paragraphs carefully and answer the questions that follow it.

Paragraph 1: Conservation reserves and community reserves in India are terms denoting protected areas of India which typically act as buffer zones to or connectors and migration corridors between established national parks, wildlife sanctuaries and reserved and protected forests of India. The Kadalundi-Vallikkunnu Community

Reserve, the Kerala's first community reserve with a unique estuarial ecosystem, is in bad shape **as none cares for it**. The initial interest shown by the government and people in conserving the mangroves and mudflats of Kadalundi when the concept of community reserve was launched in 2017 no longer exists. Nothing visible has been done for the community reserve in the last few years. Moreover, a master plan prepared for the facility has been apparently dumped.

Paragraph 2: U. Kalanathan, former president of Vallikkunnu grama panchayat and an *outspoken* exponent of mangrove conservation, said that strong political interests shown by those in the managing committee had virtually killed the community reserve.

Paragraph 3: "Nothing is taking place at Kadalundi. It is indeed a sad thing. In fact, a lot could have been done to lift this community reserve to a state where the world would take note of it," said Mr. Kalanathan. At present, a few tour operators are offering sightseeing services in country boats and homestays at Kadalundi. However, the promotion of local tourism in a small way by involving entrepreneurs should not be a mandate for the community reserve managing committee, according to Mr. Kalanathan.

Paragraph 4: Unabated dumping of waste in the ecologically fragile estuary continues to be the biggest menace for the community reserve. Some boards warning against dumping of waste at the community reserve have long disappeared.

Paragraph 5: Echoing concerns raised by scientists studying the mudflats of Kadalundi and the foraging habits of migratory birds reaching there, Mr. Kalanathan said: "Major changes have taken place in the mangrove and mudflat ecosystems of Kadalundi of late. This does not augur well for both the community reserve and thousands of migratory birds reaching the estuarial mudflats for annual summering." He demanded that the government take solid and visible action not only to conserve the mangroves of Kadalundi but also to give the community reserve a momentum.

What does the author mean by the term "**outspoken**" as used in Paragraph 2?

- (i) U. Kalanathan crossed line while he was expressing his opinions on the efforts made toward conserving the Kadalundi-Vallikkunnu Community Reserve.
- (ii) U. Kalanathan tried to belittle the efforts made toward conserving the Kadalundi-Vallikkunnu Community Reserve.
- (iii) U. Kalanathan honestly shared his opinion on the efforts made toward conserving the Kadalundi-Vallikkunnu Community Reserve. **(1 Mark)**

- A. Only (i)
- B. Only (ii)
- C. Both (i) and (ii)
- D. Only (iii)
- E. All of (i), (ii) and (iii)

Q.83 **Essay** : 81-90):Passage:

Read the following passage divided into number of paragraphs carefully and answer the questions that follow it.

Paragraph 1: Conservation reserves and community reserves in India are terms denoting protected areas of India which typically act as buffer zones to or connectors and migration corridors between established national parks, wildlife sanctuaries and reserved and protected forests of India. The Kadalundi-Vallikkunnu Community Reserve, the Kerala's first community reserve with a unique estuarial ecosystem, is in bad shape **as none cares for it**. The initial interest shown by the government and people in conserving the mangroves and mudflats of Kadalundi when the concept of community reserve was launched in 2017 no longer exists. Nothing visible has been done for the community reserve in the last few years. Moreover, a master plan prepared for the facility has been apparently dumped.

Paragraph 2: U. Kalanathan, former president of Vallikkunnu grama panchayat and an *outspoken* exponent of mangrove conservation, said that strong political interests shown by those in the managing committee had virtually killed the community reserve.

Paragraph 3: "Nothing is taking place at Kadalundi. It is indeed a sad thing. In fact, a lot could have been done to lift this community reserve to a state where the world would take note of it," said Mr. Kalanathan. At present, a few tour operators are offering sightseeing services in country boats and homestays at Kadalundi. However, the promotion of local tourism in a small way by involving entrepreneurs should not be a mandate for the community reserve managing committee, according to Mr. Kalanathan.

Paragraph 4: Unabated dumping of waste in the ecologically fragile estuary continues to be the biggest menace for the community reserve. Some boards warning against dumping of waste at the community reserve have long disappeared.

Paragraph 5: Echoing concerns raised by scientists studying the mudflats of Kadalundi and the foraging habits of migratory birds reaching there, Mr. Kalanathan said: "Major changes have taken place in the mangrove and mudflat ecosystems of Kadalundi of late. This does not augur well for both the community reserve and thousands of migratory birds reaching the estuarial mudflats for annual summering." He demanded that the government take solid and visible action not only to conserve the mangroves of Kadalundi but also to give the community reserve a momentum.

Why does according to Mr. Kalanathan involving entrepreneurs to promote local tourism should not be a mandate for the community reserve managing committee, as mentioned in the third paragraph?

(i) Involving entrepreneurs to promote local tourism, according to Mr. Kalanathan, would enhance the instances of dumping of waste in the ecological fragile estuary.

(ii) Involving entrepreneurs to promote local tourism, according to Mr. Kalanathan, would decrease the livelihood means for the local people.

(iii) Involving entrepreneurs to promote local tourism, according to Mr. Kalanathan, would threaten the ecological system of the Kadalundi-Vallikkunnu Community Reserve. **(1 Mark)**

- A. Only (i)
- B. Both (ii) and (iii)
- C. Only (ii)
- D. All of (i), (ii) and (iii)
- E. None of (i), (ii) and (iii) are correct

Q.84 **Essay** : 81-90):Passage:

Read the following passage divided into number of paragraphs carefully and answer the questions that follow it.

Paragraph 1: Conservation reserves and community reserves in India are terms denoting protected areas of India which typically act as buffer zones to or connectors and migration corridors between established national parks, wildlife sanctuaries and reserved and protected forests of India. The Kadalundi-Vallikkunnu Community Reserve, the Kerala's first community reserve with a unique estuarial ecosystem, is in bad shape **as none cares for it**. The initial interest shown by the government and people in conserving the mangroves and mudflats of Kadalundi when the concept of community reserve was launched in 2017 no longer exists. Nothing visible has been done for the community reserve in the last few years. Moreover, a master plan prepared for the facility has been apparently dumped.

Paragraph 2: U. Kalanathan, former president of Vallikkunnu grama panchayat and an *outspoken* exponent of mangrove conservation, said that strong political interests shown by those in the managing committee had virtually killed the community reserve.

Paragraph 3: "Nothing is taking place at Kadalundi. It is indeed a sad thing. In fact, a lot could have been done to lift this community reserve to a state where the world would take note of it," said Mr. Kalanathan. At present, a few tour operators are offering sightseeing services in country boats and homestays at Kadalundi. However, the promotion of local tourism in a small way by involving entrepreneurs should not be a mandate for the community reserve managing committee, according to Mr. Kalanathan.

Paragraph 4: Unabated dumping of waste in the ecologically fragile estuary

continues to be the biggest menace for the community reserve. Some boards warning against dumping of waste at the community reserve have long disappeared.

Paragraph 5: Echoing concerns raised by scientists studying the mudflats of Kadalundi and the foraging habits of migratory birds reaching there, Mr. Kalanathan said: "Major changes have taken place in the mangrove and mudflat ecosystems of Kadalundi of late. This does not augur well for both the community reserve and thousands of migratory birds reaching the estuarial mudflats for annual summering." He demanded that the government take solid and visible action not only to conserve the mangroves of Kadalundi but also to give the community reserve a momentum.

Which of the following statements can be inferred as the opinion of the author in respect of the characteristics of the Kadalundi-Vallikkunnu Community Reserve?

(i) The Kadalundi-Vallikkunnu Community Reserve doesn't deserve to be called as a community reserve anymore.

(ii) The government is apathetic about improving the conditions in the Kadalundi-Vallikkunnu.

(iii) The community reserve is akin to a waste landfill. **(1 Mark)**

A. Both (ii) and (iii)

B. Only (i)

C. Both (i) and (iii)

D. Both (i) and (ii)

E. All of (i), (ii) and (iii)

Q.85 **Essay** : 81-90):Passage:

Read the following passage divided into number of paragraphs carefully and answer the questions that follow it.

Paragraph 1: Conservation reserves and community reserves in India are terms denoting protected areas of India which typically act as buffer zones to or connectors and migration corridors between established national parks, wildlife sanctuaries and reserved and protected forests of India. The Kadalundi-Vallikkunnu Community Reserve, the Kerala's first community reserve with a unique estuarial ecosystem, is in bad shape **as none cares for it**. The initial interest shown by the government and people in conserving the mangroves and mudflats of Kadalundi when the concept of community reserve was launched in 2017 no longer exists. Nothing visible has been done for the community reserve in the last few years. Moreover, a master plan prepared for the facility has been apparently dumped.

Paragraph 2: U. Kalanathan, former president of Vallikkunnu grama panchayat and

an *outspoken* exponent of mangrove conservation, said that strong political interests shown by those in the managing committee had virtually killed the community reserve.

Paragraph 3: “Nothing is taking place at Kadalundi. It is indeed a sad thing. In fact, a lot could have been done to lift this community reserve to a state where the world would take note of it,” said Mr. Kalanathan. At present, a few tour operators are offering sightseeing services in country boats and homestays at Kadalundi. However, the promotion of local tourism in a small way by involving entrepreneurs should not be a mandate for the community reserve managing committee, according to Mr. Kalanathan.

Paragraph 4: Unabated dumping of waste in the ecologically fragile estuary continues to be the biggest menace for the community reserve. Some boards warning against dumping of waste at the community reserve have long disappeared.

Paragraph 5: Echoing concerns raised by scientists studying the mudflats of Kadalundi and the foraging habits of migratory birds reaching there, Mr. Kalanathan said: “Major changes have taken place in the mangrove and mudflat ecosystems of Kadalundi of late. This does not augur well for both the community reserve and thousands of migratory birds reaching the estuarial mudflats for annual summering.” He demanded that the government take solid and visible action not only to conserve the mangroves of Kadalundi but also to give the community reserve a momentum.

Which of the followings can be inferred from the paragraph 5?

- (i) The situation of the ecological system in the Kadalundi-Vallikkunnu Community Reserve is poignant.
 - (ii) The situation of the ecological system in the Kadalundi-Vallikkunnu Community Reserve is propitious.
 - (iii) The situation of the ecological system in the Kadalundi-Vallikkunnu Community Reserve is providential. **(1 Mark)**
- A. Both (i) and (ii)
 - B. Both (ii) and (iii)
 - C. Both (i) and (iii)
 - D. Only (i)
 - E. Only (iii)

Q.86 **Essay** : 81-90):Passage:

Read the following passage divided into number of paragraphs carefully and answer the questions that follow it.

Paragraph 1: Conservation reserves and community reserves in India are terms

denoting protected areas of India which typically act as buffer zones to or connectors and migration corridors between established national parks, wildlife sanctuaries and reserved and protected forests of India. The Kadalundi-Vallikkunnu Community Reserve, the Kerala's first community reserve with a unique estuarial ecosystem, is in bad shape **as none cares for it**. The initial interest shown by the government and people in conserving the mangroves and mudflats of Kadalundi when the concept of community reserve was launched in 2017 no longer exists. Nothing visible has been done for the community reserve in the last few years. Moreover, a master plan prepared for the facility has been apparently dumped.

Paragraph 2: U. Kalanathan, former president of Vallikkunnu grama panchayat and an *outspoken* exponent of mangrove conservation, said that strong political interests shown by those in the managing committee had virtually killed the community reserve.

Paragraph 3: "Nothing is taking place at Kadalundi. It is indeed a sad thing. In fact, a lot could have been done to lift this community reserve to a state where the world would take note of it," said Mr. Kalanathan. At present, a few tour operators are offering sightseeing services in country boats and homestays at Kadalundi. However, the promotion of local tourism in a small way by involving entrepreneurs should not be a mandate for the community reserve managing committee, according to Mr. Kalanathan.

Paragraph 4: Unabated dumping of waste in the ecologically fragile estuary continues to be the biggest menace for the community reserve. Some boards warning against dumping of waste at the community reserve have long disappeared.

Paragraph 5: Echoing concerns raised by scientists studying the mudflats of Kadalundi and the foraging habits of migratory birds reaching there, Mr. Kalanathan said: "Major changes have taken place in the mangrove and mudflat ecosystems of Kadalundi of late. This does not augur well for both the community reserve and thousands of migratory birds reaching the estuarial mudflats for annual summering." He demanded that the government take solid and visible action not only to conserve the mangroves of Kadalundi but also to give the community reserve a momentum.

Which of the following is/are true according to the passage?

- (i) The pair micro-rovers which were launched to the surface of an asteroid will "jump" just once and can turn on its sides.
- (ii) The pair of micro-rovers have a maximum battery life of just 16 hours.
- (iii) The name of the pair of mirco-rovers is MINERVA-II. **(1 Mark)**

- A. Only (i)
- B. Only (ii)
- C. Only (iii)
- D. Both (i) and (ii)

E. All of (i), (ii) and (iii)

Q.87 **Essay** : 81-90):Passage:

Read the following passage divided into number of paragraphs carefully and answer the questions that follow it.

Paragraph 1: Conservation reserves and community reserves in India are terms denoting protected areas of India which typically act as buffer zones to or connectors and migration corridors between established national parks, wildlife sanctuaries and reserved and protected forests of India. The Kadalundi-Vallikkunnu Community Reserve, the Kerala's first community reserve with a unique estuarial ecosystem, is in bad shape ***as none cares for it***. The initial interest shown by the government and people in conserving the mangroves and mudflats of Kadalundi when the concept of community reserve was launched in 2017 no longer exists. Nothing visible has been done for the community reserve in the last few years. Moreover, a master plan prepared for the facility has been apparently dumped.

Paragraph 2: U. Kalanathan, former president of Vallikkunnu grama panchayat and an *outspoken* exponent of mangrove conservation, said that strong political interests shown by those in the managing committee had virtually killed the community reserve.

Paragraph 3: "Nothing is taking place at Kadalundi. It is indeed a sad thing. In fact, a lot could have been done to lift this community reserve to a state where the world would take note of it," said Mr. Kalanathan. At present, a few tour operators are offering sightseeing services in country boats and homestays at Kadalundi. However, the promotion of local tourism in a small way by involving entrepreneurs should not be a mandate for the community reserve managing committee, according to Mr. Kalanathan.

Paragraph 4: Unabated dumping of waste in the ecologically fragile estuary continues to be the biggest menace for the community reserve. Some boards warning against dumping of waste at the community reserve have long disappeared.

Paragraph 5: Echoing concerns raised by scientists studying the mudflats of Kadalundi and the foraging habits of migratory birds reaching there, Mr. Kalanathan said: "Major changes have taken place in the mangrove and mudflat ecosystems of Kadalundi of late. This does not augur well for both the community reserve and thousands of migratory birds reaching the estuarial mudflats for annual summering." He demanded that the government take solid and visible action not only to conserve the mangroves of Kadalundi but also to give the community reserve a momentum.

What is being referred by the term '**spacecraft**' as highlighted in the first

sentence of the second paragraph? **(1 Mark)**

- A. MASCOT
- B. Hayabusa2
- C. MIVERVA-II
- D. IMPACTOR
- E. JAXA

Q.88 **Essay** : 81-90):Passage:

Read the following passage divided into number of paragraphs carefully and answer the questions that follow it.

Paragraph 1: Conservation reserves and community reserves in India are terms denoting protected areas of India which typically act as buffer zones to or connectors and migration corridors between established national parks, wildlife sanctuaries and reserved and protected forests of India. The Kadalundi-Vallikkunnu Community Reserve, the Kerala's first community reserve with a unique estuarial ecosystem, is in bad shape **as none cares for it**. The initial interest shown by the government and people in conserving the mangroves and mudflats of Kadalundi when the concept of community reserve was launched in 2017 no longer exists. Nothing visible has been done for the community reserve in the last few years. Moreover, a master plan prepared for the facility has been apparently dumped.

Paragraph 2: U. Kalanathan, former president of Vallikkunnu grama panchayat and an *outspoken* exponent of mangrove conservation, said that strong political interests shown by those in the managing committee had virtually killed the community reserve.

Paragraph 3: "Nothing is taking place at Kadalundi. It is indeed a sad thing. In fact, a lot could have been done to lift this community reserve to a state where the world would take note of it," said Mr. Kalanathan. At present, a few tour operators are offering sightseeing services in country boats and homestays at Kadalundi. However, the promotion of local tourism in a small way by involving entrepreneurs should not be a mandate for the community reserve managing committee, according to Mr. Kalanathan.

Paragraph 4: Unabated dumping of waste in the ecologically fragile estuary continues to be the biggest menace for the community reserve. Some boards warning against dumping of waste at the community reserve have long disappeared.

Paragraph 5: Echoing concerns raised by scientists studying the mudflats of Kadalundi and the foraging habits of migratory birds reaching there, Mr. Kalanathan said: "Major changes have taken place in the mangrove and mudflat ecosystems of Kadalundi of late. This does not augur well for both the community reserve and thousands of migratory birds reaching the estuarial mudflats for annual summering."

He demanded that the government take solid and visible action not only to conserve the mangroves of Kadalundi but also to give the community reserve a momentum.

What is the relationship between MASCOT and MINERVA-II micro-rovers?

(I) MINERVA-II micro-rovers launched the MASCOT 10 days after the Hayabusa2 dropped the pair of MINERVA-II.

(II) MINERVA-II micro-rovers and MASCOT, both are scientific machines launched by the Hayabusa2.

(III) MASCOT is a payload of MINERVA-II micro-rovers, having similar mobility on the surface of the asteroid. **(1 Mark)**

- A. Only (I)
- B. Only (II)
- C. Only (III)
- D. Both (I) and (III)
- E. Both (I) and (II)

Q.89 **Essay** : 81-90):Passage:

Read the following passage divided into number of paragraphs carefully and answer the questions that follow it.

Paragraph 1: Conservation reserves and community reserves in India are terms denoting protected areas of India which typically act as buffer zones to or connectors and migration corridors between established national parks, wildlife sanctuaries and reserved and protected forests of India. The Kadalundi-Vallikkunnu Community Reserve, the Kerala's first community reserve with a unique estuarial ecosystem, is in bad shape **as none cares for it**. The initial interest shown by the government and people in conserving the mangroves and mudflats of Kadalundi when the concept of community reserve was launched in 2017 no longer exists. Nothing visible has been done for the community reserve in the last few years. Moreover, a master plan prepared for the facility has been apparently dumped.

Paragraph 2: U. Kalanathan, former president of Vallikkunnu grama panchayat and an *outspoken* exponent of mangrove conservation, said that strong political interests shown by those in the managing committee had virtually killed the community reserve.

Paragraph 3: "Nothing is taking place at Kadalundi. It is indeed a sad thing. In fact, a lot could have been done to lift this community reserve to a state where the world would take note of it," said Mr. Kalanathan. At present, a few tour operators are offering sightseeing services in country boats and homestays at Kadalundi. However, the promotion of local tourism in a small way by involving entrepreneurs should not be

a mandate for the community reserve managing committee, according to Mr. Kalanathan.

Paragraph 4: Unabated dumping of waste in the ecologically fragile estuary continues to be the biggest menace for the community reserve. Some boards warning against dumping of waste at the community reserve have long disappeared.

Paragraph 5: Echoing concerns raised by scientists studying the mudflats of Kadalundi and the foraging habits of migratory birds reaching there, Mr. Kalanathan said: "Major changes have taken place in the mangrove and mudflat ecosystems of Kadalundi of late. This does not augur well for both the community reserve and thousands of migratory birds reaching the estuarial mudflats for annual summering." He demanded that the government take solid and visible action not only to conserve the mangroves of Kadalundi but also to give the community reserve a momentum.

"I will spend many days on the asteroid. I am and will take the advantage of Ryugu's low gravity to move around its surface, but am I box-shaped is can't said with certainty". Who am I? Answer the question based on the information given in the passage? **(1 Mark)**

- A. MASCOT
- B. MINERVA-II
- C. Hayabusa2
- D. JAXA
- E. None of the above

Q.90 **Essay** : 81-90):Passage:

Read the following passage divided into number of paragraphs carefully and answer the questions that follow it.

Paragraph 1: Conservation reserves and community reserves in India are terms denoting protected areas of India which typically act as buffer zones to or connectors and migration corridors between established national parks, wildlife sanctuaries and reserved and protected forests of India. The Kadalundi-Vallikkunnu Community Reserve, the Kerala's first community reserve with a unique estuarial ecosystem, is in bad shape **as none cares for it**. The initial interest shown by the government and people in conserving the mangroves and mudflats of Kadalundi when the concept of community reserve was launched in 2017 no longer exists. Nothing visible has been done for the community reserve in the last few years. Moreover, a master plan prepared for the facility has been apparently dumped.

Paragraph 2: U. Kalanathan, former president of Vallikkunnu grama panchayat and

an *outspoken* exponent of mangrove conservation, said that strong political interests shown by those in the managing committee had virtually killed the community reserve.

Paragraph 3: “Nothing is taking place at Kadalundi. It is indeed a sad thing. In fact, a lot could have been done to lift this community reserve to a state where the world would take note of it,” said Mr. Kalanathan. At present, a few tour operators are offering sightseeing services in country boats and homestays at Kadalundi. However, the promotion of local tourism in a small way by involving entrepreneurs should not be a mandate for the community reserve managing committee, according to Mr. Kalanathan.

Paragraph 4: Unabated dumping of waste in the ecologically fragile estuary continues to be the biggest menace for the community reserve. Some boards warning against dumping of waste at the community reserve have long disappeared.

Paragraph 5: Echoing concerns raised by scientists studying the mudflats of Kadalundi and the foraging habits of migratory birds reaching there, Mr. Kalanathan said: “Major changes have taken place in the mangrove and mudflat ecosystems of Kadalundi of late. This does not augur well for both the community reserve and thousands of migratory birds reaching the estuarial mudflats for annual summering.” He demanded that the government take solid and visible action not only to conserve the mangroves of Kadalundi but also to give the community reserve a momentum.

Which is of the following(s) can't be considered as True based on the given information of the passage?

- (I) Hayabusa2 probe was created by the Japanese.
 - (II) MINERVA-II micro-rovers were created by the Japanese.
 - (III) MASCOT was created by the French and German.
 - (IV) Impactor was created by the Japanese. **(1 Mark)**
- A. Only (II)
 - B. Only (III)
 - C. Only (I), (II) and (III)
 - D. All of (I), (II), (III) and (IV)
 - E. Both (II) and (IV)

Q.91 **Essay** : 91-91):Passage:

There are sets of four statements in question given below which when connected using the correct sentence structure forms a complete single sentence without altering the meaning of the sentences given in the question. There are four options given below the question, choose the sentence that

forms the correct formation of single sentence which is both grammatically correct and contextually meaningful. If none follows, choose (E) as your answer.

Was not seen again; Mr Khashoggi walked into the Saudi consulate; In Istanbul earlier this month and; A critical journalist in self-imposed exile. **(1.5 Mark)**

- A. Mr Khashoggi walked into the Saudi consulate, was not seen again in Istanbul earlier this month and a critical journalist in self-imposed exile.
- B. In Istanbul earlier this month and a critical journalist in self-imposed exile, Mr Khashoggi walked into the Saudi consulate and was not seen again.
- C. A critical journalist in self-imposed exile, Mr Khashoggi walked into the Saudi consulate in Istanbul earlier this month and was not seen again.
- D. A critical journalist in self-imposed exile was not seen again in Istanbul earlier this month and Mr Khashoggi walked into the Saudi consulate.
- E. None of the above is correct.

Q.92 **Essay** : 92-92):Passage:

The following question consists of a sentence which is divided into three parts which contain grammatical errors in one or more than one part of the sentence. If there is an error in any part of the sentence, find the correct alternatives to replace those parts from the three options given below each question to make the sentence grammatically correct. If all the parts of the sentence are incorrect and none of the alternatives are correct to replace them, then choose (D) i.e. none of the (I), (II) and (III) as your answer. If the given sentence is grammatically correct or does not require any correction, choose (E) i.e. No correction required as your answer.

He, you and I have done (I)/ our best to get recruited (II)/ in the best data analytics company of Bengaluru (III).

(I) You, He and I have done

(II) my best to get recruited

(III) in the best data analytics company of a Bengaluru. **(1.5 Mark)**

- A. Only (I)
- B. Both (I) and (II)
- C. Only (III)
- D. None of the (I), (II) and (III)

E. No correction required

Q.93 **Essay** : 93-93):Passage:

In the following question a part of the sentence is given in bold, it is then followed by three sentences which try to explain the meaning of the phrase given in bold. Choose the best set of alternatives from the five options given below each question which explains the meaning of the phrase correctly without altering the meaning of the sentence given as question.

The struggle to maintain an independent Ukrainian Orthodox church continued after 1654, when Ukraine was **politically yoked** to Moscow.

(I) The struggle to maintain an independent Ukrainian Orthodox church after 1654, when Ukraine was politically maverick to Moscow.

(II) To maintain an independent Ukrainian Orthodox church when Ukraine was politically joined with Moscow in a close relationship, a struggle continued after 1654.

(III) The struggle to maintain an independent Ukrainian Orthodox church continued after 1654, when Ukraine was politically independent of the Moscow.

(1 Mark)

- A. Only (i)
- B. Both (i) and (ii)
- C. Only (ii)
- D. Both (ii) and (iii)
- E. None of the above

Q.94 **Essay** : 94-94):Passage:

In question given below there are two statements, each statement consists of two blanks. You have to choose the option which provides the correct set of words that fits both the blanks in both the statements appropriately and in the same order making them meaningful and grammatically correct.

(1) The _____ Elric brothers try to bring their dead mother back to life, using forbidden _____ and pay a tormenting physical and mental price.

(2) The exhibition is not visually _____, but the combination of words and artworks creates an _____ of ideas that is greater than the sum of its imaginative parts. **(1 Mark)**

- A. bestial, aptitude
- B. cohesive, alchemy
- C. tactile, clemency
- D. wretched, dissident
- E. aghast, anarchy

Q.95 **Essay** : 95-95):Passage:

In each of the given questions an inference is given in bold which is then followed by three paragraphs. You have to find the paragraph(s) from where it is inferred. Choose the option with the best possible outcome as your choice.

Rebel faction threatens to set up its own organisational structure.

(I) The development comes a day after the warring factions held talks here to iron out differences ahead of the 2019 Lok Sabha elections. The members of the two groups had described the meeting as “positive” and “fruitful”.

(II) Following a meeting of its core committee on Tuesday, the AAP announced appointments of three district and eight constituency presidents, besides giving the charge of its Punjab kisan and transport cells to two MLAs.

(III) The Aam Aadmi Party’s rebel faction in Punjab on Wednesday criticised the announcement of new office-bearers by the party and threatened to set up its own organisational structure if the appointments are not scrapped by November

1. (1.5 Mark)

- A. Both (II) and (III)
- B. Only (III)
- C. Both (I) and (II)
- D. All of (I), (II) and (III)
- E. Both (I) and (III)

Q.96 **Essay** : 96-96):Passage:

There are sets of four statements in question given below which when connected using the correct sentence structure forms a complete single

sentence without altering the meaning of the sentences given in the question. There are four options given below the question, choose the sentence that forms the correct formation of single sentence which is both grammatically correct and contextually meaningful. If none follows, choose (E) as your answer.

Destined to grow even vaster; Fiscal hawks decry huge public debts,; Bigger bills for health care and pensions; As ageing populations rack up ever; **(1 Mark)**

- A. Bigger bills for health care and pensions, destined to grow even vaster as ageing populations rake up ever and fiscal hawks decry huge public debts.
- B. Fiscal hawks decry huge public debts, destined to grow even vaster as ageing populations rack up ever bigger bills for health care and pensions.
- C. As ageing populations rack up ever destined to grow even vaster, Fiscal hawks decry huge public debts bigger bills for health care and pensions.
- D. Despite destined to grow even vaster as ageing populations rack up ever bigger bills for health care and pensions fiscal hawks decry huge public debts.
- E. None of the above are correct.

Q.97 **Essay** : 97-97):Passage:

The following question consists of a sentence which is divided into three parts which contain grammatical errors in one or more than one part of the sentence. If there is an error in any part of the sentence, find the correct alternatives to replace those parts from the three options given below each question to make the sentence grammatically correct. If all the parts of the sentence are incorrect and none of the alternatives are correct to replace them, then choose (D) i.e. none of the (I), (II) and (III) as your answer. If the given sentence is grammatically correct or does not require any correction, choose (E) i.e. No correction required as your answer.

While there is no magic bullet (I)/ such as odd-even, there are feasible measures (II)/ who would make a huge difference in a few years. (III)

- (I) Along with there is no magic bullet
 - (II) such as odd-even, there is feasible measures
 - (III) which would make a huge difference in a few years **(1 Mark)**
- A. Only (III)
 - B. Both (I) and (III)

- C. All (I), (II) and (III)
- D. None of the (I), (II) and (III)
- E. No correction required

Q.98 **Essay** : 98-98):Passage:

In the following question a part of the sentence is given in bold, it is then followed by three sentences which try to explain the meaning of the phrase given in bold. Choose the best set of alternatives from the five options given below each question which explains the meaning of the phrase correctly without altering the meaning of the sentence given as question.

The drubbing meted out by the voters of Bavaria to Germany's Christian Social Union (csu) on October 14th turns out to have been only the second-nastiest beating administered that day.

(I) The serious defeat given as a punishment by the voters of Bavaria to Germany's Christian Social Union (csu) on October 14th turns out to have been only the second-nastiest beating administered that day.

(II) The unexpected success given by the voters of Bavaria to Germany's Christian Social Union (csu) on October 14th resulted in the second-nastiest defeat for the opponent of the csu.

(III) The ecstatic joy given by the voters of Bavaria to Germany's Christian Social Union (csu) on October 14th was the second-best joy for the csu. **(1.5**

Mark)

- A. Only (I)
- B. Only (II)
- C. Only (III)
- D. All of (I), (II) and (III)
- E. Both (I) and (III)

Q.99 **Essay** : 99-99):Passage:

In question given below there are two statements, each statement consists of two blanks. You have to choose the option which provides the correct set of words that fits both the blanks in both the statements appropriately and in the same order making them meaningful and grammatically correct.

(1) Jamiu Abiola, _____ of Former army general of Nigeria, who was about 17 when his father and mother were deceived, _____, and murdered, is courageous to have returned from United States to live in Nigeria.

(2) Many hire trusted _____ or kin rather than a better-qualified stranger, to limit the risk of being _____ or sued by employees. **(1 Mark)**

- A. kith, robbed
- B. offal, sweltered
- C. mettle, depleted
- D. ennui, lauded
- E. denizen, ossified

Q.100 **Essay** : 100-100):Passage:

In each of the given questions an inference is given in bold which is then followed by three statements. You have to find the statement(s) from where it is inferred. Choose the option with the best possible outcome as your choice.

Modi steps in as CBI begins to probe its own leadership.

(i) According to top officials, the CBI Director briefed Mr. Doval, the NSA, about the case. "He briefed the Prime Minister with all the details regarding the case and subsequently, the Prime Minister asked him to meet and brief the NSA also since the name of a senior officer of R&AW is also mentioned in the FIR," a top official told The Hindu.

(ii) As the Central Bureau of Investigation's second-in-command Rakesh Asthana was embroiled in a bribery case, Prime Minister Narendra Modi and National Security Adviser Ajit Doval swung into damage control, asking CBI Director Alok Verma to ensure the government's image was not tarnished.

(iii) Asked whether the Prime Minister or the NSA said anything during the meeting, the official said: "Both are concerned about the government's image getting tarnished in the matter. The NSA asked the Director to lie low and ensure that the government's image is not damaged in the process." **(1.5 Mark)**

- A. Only (i)
- B. Both (ii) and (iii)
- C. All of (i), (ii) and (iii)
- D. Only (ii)
- E. None of the above

Q.101 **Essay** : 101-101):Passage:

There are sets of four statements in question given below which when connected using the correct sentence structure forms a complete single sentence without altering the meaning of the sentences given in the question. There are four options given below the question, choose the sentence that forms the correct formation of single sentence which is both grammatically correct and contextually meaningful. If none follows, choose (E) as your answer.

Announced that the death penalty would be abolished; On October 10th Liew Vui Keong; Although the necessary legislation has yet to be introduced in parliament; A minister. **(1.5 Mark)**

- A. Although the necessary legislation has yet to be introduced in parliament a minister announced that the death penalty would be abolished on October 10th Liew Vui Keong.
- B. A minister although the necessary legislation has yet to be introduced in parliament, on October 10th Liew Vui Keong announced that the death penalty would be abolished
- C. A minister announced that the death penalty would be abolished on October 10th Liew Vui Keong, although the necessary legislation has yet to be introduced in parliament.
- D. On October 10th Liew Vui Keong, a minister, announced that the death penalty would be abolished although the necessary legislation has yet to be introduced in parliament.
- E. None of the above

Q.102 **Essay** : 102-102):Passage:

The following question consists of a sentence which is divided into three parts which contain grammatical errors in one or more than one part of the sentence. If there is an error in any part of the sentence, find the correct alternatives to replace those parts from the three options given below each question to make the sentence grammatically correct. If all the parts of the sentence are incorrect and none of the alternatives are correct to replace them, then choose (D) i.e. none of the (I), (II) and (III) as your answer. If the given sentence is grammatically correct or does not require any correction, choose (E) i.e. No correction required as your answer.

Verma were ousted as director of the premier investigation agency (I)/ in the early hours of Wednesday, a move he has described as “patently illegal” (II)/ in a petition before the Supreme Court (III).

(I) Verma was ousted as director of the premier investigation agency

(II) in a early hours of Wednesday, a move he has described as “patently illegal”

(III) in a petition above the Supreme Court **(1.5 Mark)**

- A. Only (I)
- B. Only (II)
- C. Only (III)
- D. None of (I), (II) and (III)
- E. No correction required

Q.103 **Essay** : 103-103):Passage:

In question given below there are two statements, each statement consists of two blanks. You have to choose the option which provides the correct set of words that fits both the blanks in both the statements appropriately and in the same order making them meaningful and grammatically correct.

(1) By _____ heavy fuel oil, just 15 of the biggest ships emit more of the _____ oxides of nitrogen and sulphur than all the world’s cars put together.

(2) It's hard to tell, a woman says, whether the record-breaking wildfires _____ to the north and south of her is causing the _____ smoke or the usual controlled burns in the farmers' fields surrounding her home. **(1 Mark)**

- A. exuding, paltry
- B. buttressing, sumptuous
- C. misconstruing, facile
- D. manifesting, pristine
- E. blazing, noxious

Q.104 **Essay** : 104-104):Passage:

In this question a small paragraph is given followed by three possible inferences which may or may not be correct. The question is then followed by five options. You have to choose the option which gives the best possible outcome.

Australia is perhaps the most successful rich economy

(I) Rising incomes, low public debt, an affordable welfare state, popular support for mass immigration and a broad consensus on the policies underpinning these things—that is a distant dream in most rich countries. Many Western politicians could scarcely imagine a place that combined them all. Happily, they do not have to, because such a country already exists: Australia

(II) What is the biggest problem facing America? Or Japan? Or Britain? Or France? Opinions vary, naturally, but some worries crop up again and again. Those of a materialist bent point to decades of slow growth in median incomes, which has bred disillusion and anger among working people. Fiscal hawks decry huge public debts, destined to grow even vaster as ageing populations rack up ever bigger bills for health care and pensions. Then there is immigration, which has prompted a furious populist backlash in the United States and all over Europe. That hints at what, for many, is the most alarming trend of all: the lack of any semblance of a political consensus about how to handle these swelling crises.

(III) Australia is far away from everywhere, or has only 25m inhabitants, or is seen mainly as a habitat for cuddly marsupials, it attracts relatively little attention. But its economy is arguably the most successful in the rich world. It has been growing for 27 years without a recession—a record for a developed country. Its cumulative growth over that period is almost three times what Germany has managed. The median income has risen four times faster than in America. Public debt, at 41% of gdp, is less than half Britain's. **(1.5 Mark)**

- A. Only (I)
- B. Only (II)
- C. Only (III)
- D. Both (I) and (III)
- E. All of (I), (II) and (III)

Q.105 Essay : 105-105):Passage:

In question given below there are two statements, each statement consists of two blanks. You have to choose the option which provides the correct set of words that fits both the blanks in both the statements appropriately and in the same order making them meaningful and grammatically correct.

(1) The president's vanishingly rare appearance on a nonpartisan news program had resulted in a spectacle in which a man eager to speak _____ randomly _____ questions.

(2) Mr. Helmut Kohl, who recently passed away, _____ his way through _____ scandals. **(1 Mark)**

- A. coveted, copious
- B. digressed, transient
- C. bulldozed, assorted
- D. yelped, brackish
- E. amalgamated, glutinous

Q.106 **Essay** : 106-106):Passage:

There are sets of four statements in question given below which when connected using the correct sentence structure forms a complete single sentence without altering the meaning of the sentences given in the question. There are four options given below the question, choose the sentence that forms the correct formation of single sentence which is both grammatically correct and contextually meaningful. If none follows, choose (E) as your answer.

Since 1956, of the “corrupt” Congress and to restore Telugu self-respect and pride; When Mr. Naidu’s father-in-law and former Andhra Pradesh Chief Minister N.T. Rama Rao (NTR); His two-point agenda was to break in the State the uninterrupted one-party rule; Founded the party in 1982. **(1.5 Mark)**

- A. When Mr. Naidu’s father-in-law and former Andhra Pradesh Chief Minister N.T. Rama Rao (NTR) founded the party in 1982, since 1956, of the “corrupt” Congress and to restore Telugu self-respect and pride, his two-point agenda was to break in the State the uninterrupted one-party rule.
- B. When Mr. Naidu’s father-in-law and former Andhra Pradesh Chief Minister N.T. Rama Rao (NTR) founded the party in 1982, his two-point agenda was to break in the State the uninterrupted one-party rule since 1956, of the “corrupt” Congress and to restore Telugu self-respect and pride.
- C. His two-point agenda was to break in the State the uninterrupted one-party rule when Mr. Naidu’s father-in-law and former Andhra Pradesh Chief Minister N.T. Rama Rao (NTR) founded the party in 1982 since 1956, of the “corrupt” Congress and to restore Telugu self-respect and pride.
- D. Founded the party in 1982 when Mr. Naidu’s father-in-law and former Andhra Pradesh Chief Minister N.T. Rama Rao (NTR) since 1956, of the “corrupt” Congress and to restore Telugu self-respect and pride, his two-point agenda was to break in the State the uninterrupted one-party rule.

E. None of the above are correct.

Q.107 **Essay** : 107-107):Passage:

The following question consists of a sentence which is divided into three parts which contain grammatical errors in one or more than one part of the sentence. If there is an error in any part of the sentence, find the correct alternatives to replace those parts from the three options given below each question to make the sentence grammatically correct. If all the parts of the sentence are incorrect and none of the alternatives are correct to replace them, then choose (D) i.e. none of the (I), (II) and (III) as your answer. If the given sentence is grammatically correct or does not require any correction, choose (E) i.e. No correction required as your answer.

There are several problems with the arguments being made (I)/ for a separate payments regulator, apart from the obvious fact that non-banks are participating (II)/ in the payments system without a problem even today. (III)

(I) There are several problems with the arguments been made

(II) of a separate payments regulator, apart from the obvious fact that non-banks is participating

(III) in the payments system without the problem even today **(1 Mark)**

A. Both (II) and (III)

B. Both (I) and (III)

C. Both (I) and (II)

D. None of the (I), (II) and (III)

E. No correction required

Q.108 **Essay** : 108-108):Passage:

In each of the given questions an inference is given in bold which is then followed by three statements. You have to find the statement(s) from where it is inferred. Choose the option with the best possible outcome as your choice.

Guntur Collector's campaign for enrolling students as voters pays off

(I) The twin adventurous rides were part of a novel initiative launched by Guntur Collector Kona Sasidhar to encourage young men and women to enroll themselves as

voters as part of Systematic Voters' Education and Electoral Participation (SVEEP), an initiative of the Election Commission of India. Students selected through a draw of lots were given a chance to fly or glide in the sky.

(II) The district administration's initiative of offering flying in a hot air balloon to students who would enroll themselves as voters paid off as over 50,000 students enrolled themselves on a single day on Monday, setting off a national record. Preparations began in right earnest as Mr. Sasidhar, Guntur Collector, deputed special officers to all 518 colleges in the district. The enrolment of voters would continue till December 31, 2018, and more campaigns have been planned to enrol students as voters.

(III) On Tuesday, there was excitement in the skies and on the ground below, as the young boys and girls experienced the thrill of flying in a hot air balloon and some of the adventurous, glided in a para-router accompanied by qualified trainers. **(1.5**

Mark)

- A. Both (I) and (II)
- B. Only (II)
- C. Only (I)
- D. Both (II) and (III)
- E. Only (III)

Q.109 **Essay** : 109-109):Passage:

In question given below there are two statements, each statement consists of two blanks. You have to choose the option which provides the correct set of words that fits both the blanks in both the statements appropriately and in the same order making them meaningful and grammatically correct.

(1) Although the primary attraction of the Oktoberfest is indeed the beer served in "MaB," glasses that hold 34 fluid ounces (1 liter), there are also _____ food trucks and amusement rides for _____ entertainment.

(2) The party atmosphere at the company's sales event—with _____ food and wine laid on for customers and journalists alike—has given way this year to a more _____ mood. **(1 Mark)**

- A. antithetical, nominal
- B. macular, ironclad
- C. insular, atavistic
- D. copious, sober
- E. fatuous, fractious

Q.110 **Essay** : 110-110):Passage:

In each of the given questions an inference is given in bold which is then followed by three statements. You have to find the statement(s) from where it is inferred. Choose the option with the best possible outcome as your choice. Silencing of academics from criticising the government denies us a vital safeguard against despotism.

(I) The university in India is morphing under external pressure. How it will end up should be a matter of concern for all Indians and not just its denizens. This is so as universities are a source of new ideas for human advancement, hold a mirror to society, and act as a bulwark against authoritarianism. At least that is the idea behind setting them up at public expense.

(II) A recent diktat requires employees of publicly-funded universities to be subjected to the Central Civil Service (conduct) rules governing Central government employees. Now, Central government employees are prohibited from writing critically about the government and making joint representations. The silencing of academics is taken to be both a sign of backwardness and incompatible with democracy. But it is more than just how the world sees it, for stifling freedom reinforces the backwardness of a society.

(III) The argument that universities need adhere to a code of conduct is incontestable. All associations need codes of conduct to prevent chaos. Further, taking democracy seriously would make it incumbent upon them to adopt codes in keeping with its norms. Thus, universities need to follow codes maintaining respect for the autonomy of its members, ensuring fairness in the evaluation of performance of students and teachers, efficiency in the conduct of everyday business, and accountability in the wielding of power by the administrative authority. **(1 Mark)**

- A. Both (I) and (II)
- B. Only (II)
- C. Only (III)
- D. Both (I) and (III)
- E. None of the above

Q.111 **Essay** : 111-111):Passage:

There are sets of four statements in question given below which when connected using the correct sentence structure forms a complete single

sentence without altering the meaning of the sentences given in the question. There are four options given below the question, choose the sentence that forms the correct formation of single sentence which is both grammatically correct and contextually meaningful. If none follows, choose (E) as your answer.

Corruption and other types of financial and banking crimes are on the rise; At a time when economic offences; It is a shame that the agencies appointed to guard the country from such evils are; Themselves facing charges of serious graft; **(1 Mark)**

- A. Themselves facing charges of serious graft at a time when economic offences, corruption and other types of financial and banking crimes are on the rise, it is a shame that the agencies appointed to guard the country from such evils are.
- B. Corruption and other types of financial and banking crimes are on the rise at a time when economic offences themselves facing charges of serious graft and it is a shame that the agencies appointed to guard the country from such evils are.
- C. At a time when economic offences, corruption and other types of financial and banking crimes are on the rise, it is a shame that the agencies appointed to guard the country from such evils are themselves facing charges of serious graft.
- D. It is a shame that the agencies appointed to guard the country from such evils are corruption and other types of financial and banking crimes are on the rise at a time when economic offences themselves facing charges of serious graft.
- E. None of the above are correct.

Q.112 Essay : 112-112):Passage:

The following question consists of a sentence which is divided into three parts which contain grammatical errors in one or more than one part of the sentence. If there is an error in any part of the sentence, find the correct alternatives to replace those parts from the three options given below each question to make the sentence grammatically correct. If all the parts of the sentence are incorrect and none of the alternatives are correct to replace them, then choose (D) i.e. none of the (I), (II) and (III) as your answer. If the given sentence is grammatically correct or does not require any correction, choose (E) i.e. No correction required as your answer.

The global risk to US inflation reflects (I)/ a cyclical upturn not only in the world economy, but also mounting trade frictions (II)/ that pose serious threats to the

stability of global value, or supply, chains. (III)

(I) The global risk over US inflation reflects

(II) not only a cyclical upturn in the world economy, but also mounting trade frictions

(III) that pose serious threats in the stability of global value, or supply, chains **(1**

Mark)

A. Both (II) and (III)

B. Both (I) and (III)

C. Only (II)

D. None of the (I), (II) and (III)

E. No correction required

Q.113 **Essay** : 113-113):Passage:

In the following question a part of the sentence is given in bold, it is then followed by three sentences which try to explain the meaning of the phrase given in bold. Choose the best set of alternatives from the five options given below each question which explains the meaning of the phrase correctly without altering the meaning of the sentence given as question.

On the high plains a rig gnaws at rock more than 3,000 feet (0.9km) underground. When the drill bit reaches about a mile and a half in depth, nearly six times the height of the Empire State Building, it will **munch its way sideways** for another two miles.

(I) On the high plains an insect crawls at rock more than 3,000 feet (0.9km) underground. When the drill bit reaches about a mile and a half in depth, nearly six times the height of the Empire State Building, it will then move sideways for another two miles.

(II) On the high plains a machine is persistently wearing at rock more than 3,000 feet (0.9km) underground. When the drill bit reaches about a mile and a half in depth, nearly six times the height of the Empire State Building, it will drill for another two miles.

(III) On the high plains a machine is resting at rock more than 3,000 feet (0.9km) underground. When the drill bit reaches about a mile and a half in depth, nearly six times the height of the Empire State Building, it will start creating a hole at a new direction which is sideways of the original direction for another two miles. **(1 Mark)**

A. Only (I)

B. Both (I) and (II)

C. All of (I), (II) and (III)

D. Only (II)

E. Only (III)

Q.114 **Essay** : 114-114):Passage:

If the Sentence (A) “What was perceived as an unseemly internal tussle among top officers of the premier investigating agency has morphed into a full-blown conflict between the Centre and Mr. Verma. “is the second sentence, what is the order of the other sentences after rearrangement?

(A) What was perceived as an unseemly internal tussle among top officers of the premier investigating agency has morphed into a full-blown conflict between the Centre and Mr. Verma.

(B) But he more than hinted at interference in his functioning.

(C) The Centre may like people to think it behaved with a measure of even-handedness by divesting both Mr. Verma and Mr. Asthana of their powers, but the action of the new acting director, M. Nageswara Rao — who has transferred many officers investigating cases against Mr. Asthana — exposes where its sympathy lies.

(D) The abrupt replacement of Alok Verma as Director of the Central Bureau of Investigation, albeit as an interim measure, is the culmination of a series of murky events that must deeply embarrass the Centre.

(E) It is one thing if Mr. Verma had merely challenged the legality of his dismissal.

(F) The suggestion that the Centre’s action was meant to protect certain people has led to charges that he was removed because he was politically inconvenient. **(1**

Mark)

A. FAEBCD

B. CABDEF

C. DAEBFC

D. DACEFB

E. DAECFB

Q.115 **Essay** : 115-115):Passage:

If the sentence (A) “Dewan Housing Finance has been the worst hit among HFCs” is the third sentence, what is the order of the other sentences after rearrangement?

- (A) Dewan Housing Finance has been the worst hit among HFCs.
- (B) The current crisis began with the default of Infrastructure Leasing and Financial Services on several of its dues last month.
- (C) Shares of non-banking financial companies (NBFCs) have witnessed a steep fall in recent weeks after concerns over whether they can successfully meet their short-term dues.
- (D) The Union government subsequently decided to step in and assure lenders to the company that their money would be paid back safely without any default.
- (E) Housing finance companies (HFCs) have seen their shares punished severely over fears of a severe liquidity crisis. **(1 Mark)**

- A. CBADE
B. CBAED
C. CBAED .
D. CEABD
E. BCAED

Q.116 Which of the following is the mode of settlement of securities where in the transfer of securities and funds happen simultaneously?

- A. Delivery versus Payment (DvP)
B. Negotiated Dealing System
C. Clearing Corporation of India Ltd. (CCIL)
D. All of the Above
E. None of the given options is true

Q.117 National Institute of Mental Health Rehabilitation will be established in _____ District instead of Bhopal.

- A. Vidisha
B. Sehore
C. Gwalior
D. Panaji
E. Indore

Q.118 Under which act NBFCs are incorporated?

- A. Banking Regulation Act, 1949
- B. Companies Act, 1956
- C. RBI Act 1934
- D. SBI Act 1955
- E. None of the given options is true

Q.119 The National Khadi Festival 2018 is being organised in _____.

- A. Hyderabad
- B. Gandhinagar
- C. Ahmedabad
- D. Mumbai
- E. New Delhi

Q.120 Stock Holding was incorporated as a Public Limited Company in-

- A. 1995
- B. 1992
- C. 1986
- D. 1981
- E. 1979

Q.121 After the recent circular passed by the RBI, Peer-to-peer lending platforms will be treated as _____.

- A. Regular Banks
- B. Payment Banks
- C. Small Financial Banks
- D. Start-Ups
- E. NBFCs

Q.122 What is the tagline of State Bank of India (SBI) after the merger?

- A. Banker to every Indian
- B. The Name you can Bank Upon

- C. A Faithful & Friendly Financial Partner
- D. Experience Next Generation Banking
- E. A Tradition of Trust

Q.123 Which of the following state was ranked as the best State in Swachh Survekshan Grameen Awards 2018?

- A. Uttarakhand
- B. Haryana
- C. Punjab
- D. Sikkim
- E. Himachal Pradesh

Q.124 India's first Global Skills Park will be established in _____?

- A. Karnataka
- B. Madhya Pradesh
- C. Punjab
- D. Goa
- E. Maharashtra

Q.125 The Reserve Bank of India (RBI) has allowed state-owned oil companies to borrow long-term working capital from overseas. RBI relaxed the policy on borrowing up to _____ from the overseas by the state-owned fuel retailers.

- A. 1 billion USD
- B. 10 billion USD
- C. 5 billion USD
- D. 100 million USD
- E. 500 million USD

Q.126 The 36th National Games will be held in _____.

- A. Haryana
- B. Goa

- C. Gujarat
- D. NEW DELHI
- E. Kerala

Q.127 Who among the following won 2018 Nobel Peace Prize?

- A. Juan Manuel Santos and Nadia Murad
- B. Nadia Murad and Malala
- C. Denis Mukwege and Tawakkol Karman
- D. Denis Mukwege and Nadia Murad
- E. Juan Manuel Santos and Sonam Wangchuk

Q.128 Pension Fund Regulatory and Development Authority (PFRDA) is authorized by?

- A. GOI
- B. RBI
- C. Ministry of Commerce
- D. Ministry of Finance
- E. SBI

Q.129 India and Russia signed the S-400 air defence system deal. The amount sanctioned under the deal is _____.

- A. \$5 billion
- B. \$50 million
- C. \$2 billion
- D. \$500 million
- E. \$1 billion

Q.130 The process by which the central bank of a country controls the supply of money in the economy by exercising its control over interest rates in order to maintain price stability and achieve high economic growth is known as:

- A. Economic Policy
- B. Monetary Policy

- C. Fiscal Policy
- D. Credit Policy
- E. Budgetary Policy

Q.131 _____ has recently been appointed as the ambassador and India's permanent representative to the United Nations Conference on Disarmament (UNCD).

- A. AjitDoval
- B. Shivshankar Menon
- C. Syed Akbaruddin
- D. Nirupama Rao
- E. Pankaj Sharma

Q.132 Part of company's earning or profit which is paid out to shareholders is known as

- A. Premium
- B. Dividend
- C. Bonus
- D. Sum Assured
- E. Return

Q.133 Kanha National Park is located in

- A. New Delhi
- B. Uttar Pradesh
- C. Haryana
- D. Madhya Pradesh
- E. None of these

Q.134 All Scheduled Commercial Banks excluding _____ are eligible to implement under Gold Monetization Scheme, 2015?

- A. Private Sector Banks
- B. IDBI Bank Limited

- C. State Bank of India
- D. Regional Rural Banks
- E. Public Sector Banks

Q.135 21 countries in the IORA have adopted the Delhi Declaration on Renewable Energy.

What does R stands for in IORA?

- A. Rim
- B. Renewable
- C. Region
- D. Regional
- E. Reproductive

Q.136 Where is the head office of Bank for International Settlements (BIS)?

- A. Zurich, Switzerland
- B. New York, USA
- C. Basel, Switzerland
- D. Berlin, Germany
- E. Geneva, Switzerland

Q.137 Reliance Health Insurance, has received final approval from IRDAI for its new health insurance business. Who is the CEO of Reliance Health Insurance?

- A. Akash Ambani
- B. Ravi Viswanath
- C. Mukesh Ambani
- D. Isha Ambani
- E. Vikram Kapoor

Q.138 _____ is a quick and easy way of transferring personal remittances from abroad to beneficiaries in India.

- A. MTSS
- B. NEFT

- C. RTGS
- D. NPCI
- E. SWIFT

Q.139 Who has been appointed the chairman of the working committee and director on the board by the international industry body-World Federation of Exchanges (WFE).

- A. Rana Kapoor
- B. Vikram Limaye
- C. Shikha Sharma
- D. R S Sharma
- E. Sandeep Bakhshi

Q.140 Which of the following is a receipt, declaring ownership of shares of a foreign company and can be listed in India and traded in rupees?

- A. ADR
- B. GDR
- C. IDR
- D. EDR
- E. None of the given options is true

Q.141 Former batsman Nick Compton recently announced his retirement from cricket. He belongs to _____.

- A. Australia
- B. West Indies
- C. South Africa
- D. England
- E. New Zealand

Q.142 Which among the following conditions, Regional Rural Banks (RRBs) should fulfill to become eligible to open new branch/branches?

- A. No default in maintenance of SLR and CRR during the last two years

- B. Operational profits are being made
- C. Net worth shows improvement
- D. Net NPA ratio does not exceed 8 per cent
- E. All of the above conditions should fulfill by RRBs

Q.143 Who was recently sworn in as the 114th Justice of the Supreme Court of the United States?

- A. Brett Kavanaugh
- B. Mike Pompeo
- C. Mike Pence
- D. John Roberts
- E. Tarun Gogoi

Q.144 The Foreign exchange of India is kept with _____

- A. SBI
- B. ECGC
- C. RBI
- D. NABARD
- E. SEBI

Q.145 Which of the following state has joined Goa as a partner state to organise Goa International Film Festival that will be held in November 2018?

- A. Jharkhand
- B. Gujarat
- C. Madhya Pradesh
- D. Maharashtra
- E. Uttar Pradesh

Q.146 The Indian Air Force has launched an innovative mobile health App recently. What is the name of the app?

- A. Medical

- B. MedAid
- C. MedWatch
- D. MedEd
- E. MedForce

Q.147 World Animal Day is celebrated on _____.

- A. 23 September
- B. 04 October
- C. 15 July
- D. 07 June
- E. 14 September

Q.148 What is the Capital of Saudi Arabia?

- A. Jakarta
- B. Doha
- C. Riyadh
- D. Aden
- E. Baku

Q.149 Cheruthoni Dam, the largest concrete gravity dam in which state?

- A. Andhra Pradesh
- B. Karnataka
- C. Tamil Nadu
- D. Kerala
- E. None of these

Q.150 Sangli is a City and the district headquarters of Sangli District in the state of Maharashtra and situated on which bank of river?

- A. Penna River
- B. Krishna River
- C. Minachil River

- D. Savitri River
- E. None of these

Q.151 Name the First Bank to introduce saving Bank in India.

- A. Bank of Hindustan
- B. Syndicate Bank
- C. Bengal Bank
- D. Presidency Bank
- E. None of these

Q.152 Where is the headquarter of First Rand Bank?

- A. USA
- B. South Africa
- C. Brazil
- D. Australia
- E. None of these

Q.153 Lava Dance a folk dance mainly performed by the males in which state?

- A. Lakshadweep
- B. Puducherry
- C. Daman and deep
- D. New Delhi
- E. None of these

Q.154 Who is the Women and Child Development Minister of India?

- A. Ravi Shankar Prasad
- B. NitinJairamGadkari
- C. Smt. Maneka Sanjay Gandhi
- D. RamvilasPaswan
- E. Narendra Singh Tomar

Q.155 In which district first phase of 65 MW KashangHydel Project has launched in Himachal Pradesh?

- A. Kinnaur
- B. Kullu
- C. Sirmaur
- D. Hamirpur
- E. None of these