

Test Name : IBPS PO MAIN 02  
Difficulty Level : medium  
Test Type : Free

Total Questions : 155  
Total Marks : 155.00  
Duration : 180.00 mins

Q.1 **Essay** : 1-5):Passage:

**Study the information given below and answer the given questions.**

F, A, J, Q, I, P, G, B and H nine footballers who are staying in a hotel for a match tomorrow, but not necessarily in the same order. The Hotel has nine floors and only one person stays on one floor. All of them belong to different cities, i.e. R, E, S, T, U, C, V, D and W, but not necessarily in the same order. The ground floor is numbered 1, the floor above it is numbered 2, and so on, and the topmost floor is numbered 9.

B belongs to T and stays on an even-numbered floor. Four of them belong to country M while the other four belongs to X. Each of them is wearing a different numbered Jersey from 1 to 9. F stays on any even-numbered floor below the floor on which B stays.

There are only two persons who have consecutive jersey numbers and stays immediately next to each other. The one who belongs to D stays on the fourth floor.

City named R and U are a part of X. The one who stays on top floor is wearing an even numbered jersey. The floor number of P is the same as the jersey number of J. I stays on the second floor and belongs to S. The one who belongs to W stays on the third floor. F does not belong to C. H belongs to X. There are two floors gap between the

floors on which the persons who are from V and T stay. J belongs to E. There are three floors between the floors on which J and G stay. The jersey number of I is the same as the floor number of the one living immediately above him. H wears 6 and F wears 9 numbered jersey and the one having same jersey and floor number does not stay on any of the floor between them. Q stays on a floor immediately above H's floor. Only one person has the same floor number and jersey number and he does not stay on an odd numbered floor. City V is neither a part of country M nor X. The one whose jersey number is 4 belong to city R. There is one floor between the floors on which P and G stay. P does not belong to W. The one who belongs to R stays on the topmost floor. P does not stay on the ground floor. C is a part of X. H does not belong to M. One of the person who belongs to country X has jersey number 5.

Who amongst the following players belong to C? **(1 Mark)**

- A. Q
- B. H
- C. G
- D. P

E. None of these

**Answer : D,**

**Solution :**

Floors	Person	City	Number	Country
9	A	R	4	X
8	B	T	8	M
7	P	C	5	X
6	F	U	9	X
5	G	V	1/2	
4	Q	D	1/2	M
3	H	W	6	X
2	I	S	3	M
1	J	E	7	M

Q.2 **Essay : 1-5):**Passage:

**Study the information given below and answer the given questions.**

F, A, J, Q, I, P, G, B and H nine footballers who are staying in a hotel for a match tomorrow, but not necessarily in the same order. The Hotel has nine floors and only one person stays on one floor. All of them belong to different cities, i.e. R, E, S, T, U, C, V, D and W, but not necessarily in the same order. The ground floor is numbered 1, the floor above it is numbered 2, and so on, and the topmost floor is numbered 9.

B belongs to T and stays on an even-numbered floor. Four of them belong to country M while the other four belongs to X. Each of them is wearing a different numbered Jersey from 1 to 9. F stays on any even-numbered floor below the floor on which B stays.

There are only two persons who have consecutive jersey numbers and stays immediately next to each other. The one who belongs to D stays on the fourth floor.

City named R and U are a part of X. The one who stays on top floor is wearing an even numbered jersey. The floor number of P is the same as the jersey number of J. I stays on the second floor and belongs to S. The one who belongs to W stays on the third floor. F does not belong to C. H belongs to X. There are two floors gap between the floors on which the persons who are from V and T stay. J belongs to E. There are three floors between the floors on which J and G stay. The jersey number of I is the same as the floor number of the one living immediately above him. H wears 6 and F wears 9 numbered jersey and the one having same jersey and floor number does not stay on any of the floor between them. Q stays on a floor immediately above H's floor. Only one person has the same floor number and jersey number and he does not stay on an odd numbered floor. City V is neither a part of country M nor X. The one whose jersey

number is 4 belong to city R. There is one floor between the floors on which P and G stay. P does not belong to W. The one who belongs to R stays on the topmost floor. P does not stay on the ground floor. C is a part of X. H does not belong to M. One of the person who belongs to country X has jersey number 5.

Which amongst the following persons wears 2 number jersey? **(1 Mark)**

- A. P
- B. G
- C. Q
- D. Either G or Q
- E. None of these

**Answer : D,**

**Solution :**

Floors	Person	City	Number	Country
9	A	R	4	X
8	B	T	8	M
7	P	C	5	X
6	F	U	9	X
5	G	V	1/2	
4	Q	D	1/2	M
3	H	W	6	X
2	I	S	3	M
1	J	E	7	M

Q.3 **Essay : 1-5):**Passage:

**Study the information given below and answer the given questions.**

F, A, J, Q, I, P, G, B and H nine footballers who are staying in a hotel for a match tomorrow, but not necessarily in the same order. The Hotel has nine floors and only one person stays on one floor. All of them belong to different cities, i.e. R, E, S, T, U, C, V, D and W, but not necessarily in the same order. The ground floor is numbered 1, the floor above it is numbered 2, and so on, and the topmost floor is numbered 9.

B belongs to T and stays on an even-numbered floor. Four of them belong to country M while the other four belongs to X. Each of them is wearing a different numbered Jersey from 1 to 9. F stays on any even-numbered floor below the floor on which B stays.

There are only two persons who have consecutive jersey numbers and stays immediately next to each other. The one who belongs to D stays on the fourth floor.

City named R and U are a part of X. The one who stays on top floor is wearing an even numbered jersey. The floor number of P is the same as the jersey number of J. I stays on the second floor and belongs to S. The one who belongs to W stays on the third floor. F does not belong to C. H belongs to X. There are two floors gap between the floors on which the persons who are from V and T stay. J belongs to E. There are three floors between the floors on which J and G stay. The jersey number of I is the same as the floor number of the one living immediately above him. H wears 6 and F wears 9 numbered jersey and the one having same jersey and floor number does not stay on any of the floor between them. Q stays on a floor immediately above H's floor. Only one person has the same floor number and jersey number and he does not stay on an odd numbered floor. City V is neither a part of country M nor X. The one whose jersey number is 4 belong to city R. There is one floor between the floors on which P and G stay. P does not belong to W. The one who belongs to R stays on the topmost floor. P does not stay on the ground floor. C is a part of X. H does not belong to M. One of the person who belongs to country X has jersey number 5.

F belongs to which of the following place? **(1 Mark)**

- A. D
- B. W
- C. U
- D. R
- E. None of these

**Answer : C,**

**Solution :**

Floors	Person	City	Number	Country
9	A	R	4	X
8	B	T	8	M
7	P	C	5	X
6	F	U	9	X
5	G	V	1/2	
4	Q	D	1/2	M
3	H	W	6	X
2	I	S	3	M
1	J	E	7	M

Q.4 **Essay : 1-5):**Passage:

**Study the information given below and answer the given questions.**

F, A, J, Q, I, P, G, B and H nine footballers who are staying in a hotel for a match tomorrow, but not necessarily in the same order. The Hotel has nine floors and only one person stays on one floor. All of them belong to different cities, i.e. R, E, S, T, U, C, V, D and W, but not necessarily in the same order. The ground floor is numbered 1, the floor above it is numbered 2, and so on, and the topmost floor is numbered 9.

B belongs to T and stays on an even-numbered floor. Four of them belong to country M while the other four belongs to X. Each of them is wearing a different numbered Jersey from 1 to 9. F stays on any even-numbered floor below the floor on which B stays.

There are only two persons who have consecutive jersey numbers and stays immediately next to each other. The one who belongs to D stays on the fourth floor. City named R and U are a part of X. The one who stays on top floor is wearing an even numbered jersey. The floor number of P is the same as the jersey number of J. I stays on the second floor and belongs to S. The one who belongs to W stays on the third floor. F does not belong to C. H belongs to X. There are two floors gap between the floors on which the persons who are from V and T stay. J belongs to E. There are three floors between the floors on which J and G stay. The jersey number of I is the same as the floor number of the one living immediately above him. H wears 6 and F wears 9 numbered jersey and the one having same jersey and floor number does not stay on any of the floor between them. Q stays on a floor immediately above H's floor. Only one person has the same floor number and jersey number and he does not stay on an odd numbered floor. City V is neither a part of country M nor X. The one whose jersey number is 4 belong to city R. There is one floor between the floors on which P and G stay. P does not belong to W. The one who belongs to R stays on the topmost floor. P does not stay on the ground floor. C is a part of X. H does not belong to M. One of the person who belongs to country X has jersey number 5.

If one of the given nine persons belongs to country Y, who among the following could be it? **(1 Mark)**

- A. I
- B. Q
- C. F
- D. G
- E. None of these

**Answer : D,**

**Solution :**

Floors	Person	City	Number	Country
9	A	R	4	X
8	B	T	8	M
7	P	C	5	X
6	F	U	9	X
5	G	V	1/2	
4	Q	D	1/2	M
3	H	W	6	X
2	I	S	3	M
1	J	E	7	M

Q.5 **Essay** : 1-5):Passage:

**Study the information given below and answer the given questions.**

F, A, J, Q, I, P, G, B and H nine footballers who are staying in a hotel for a match tomorrow, but not necessarily in the same order. The Hotel has nine floors and only one person stays on one floor. All of them belong to different cities, i.e. R, E, S, T, U, C, V, D and W, but not necessarily in the same order. The ground floor is numbered 1, the floor above it is numbered 2, and so on, and the topmost floor is numbered 9.

B belongs to T and stays on an even-numbered floor. Four of them belong to country M while the other four belongs to X. Each of them is wearing a different numbered Jersey from 1 to 9. F stays on any even-numbered floor below the floor on which B stays.

There are only two persons who have consecutive jersey numbers and stays immediately next to each other. The one who belongs to D stays on the fourth floor. City named R and U are a part of X. The one who stays on top floor is wearing an even numbered jersey. The floor number of P is the same as the jersey number of J. I stays on the second floor and belongs to S. The one who belongs to W stays on the third floor. F does not belong to C. H belongs to X. There are two floors gap between the floors on which the persons who are from V and T stay. J belongs to E. There are three floors between the floors on which J and G stay. The jersey number of I is the same as the floor number of the one living immediately above him. H wears 6 and F wears 9 numbered jersey and the one having same jersey and floor number does not stay on any of the floor between them. Q stays on a floor immediately above H's floor. Only one person has the same floor number and jersey number and he does not stay on an odd numbered floor. City V is neither a part of country M nor X. The one whose jersey number is 4 belong to city R. There is one floor between the floors on which P and G stay. P does not belong to W. The one who belongs to R stays on the topmost floor. P does not stay on the ground floor. C is a part of X. H does not belong to M. One of the person who belongs to country X has jersey number 5.

How many floors are there between the floor on which H stays and the floor on which J stays? **(1 Mark)**

- A. One
- B. Two
- C. None
- D. Three
- E. More than three

**Answer : A,**

**Solution :**

Floors	Person	City	Number	Country
9	A	R	4	X
8	B	T	8	M
7	P	C	5	X
6	F	U	9	X
5	G	V	1/2	
4	Q	D	1/2	M
3	H	W	6	X
2	I	S	3	M
1	J	E	7	M

Q.6 **Essay : 6-10):**Passage:

**Study the information carefully and answer the questions given below.**

There is 3\*5 matrix which can produce signals which in turn help in the illumination of some bulbs. The row of the matrix are denoted by @, % and # from bottom to top and the columns are denoted by the alphabets A, B, C D and E from left to right.

@ row contains number which are consecutive multiple of 9, starting from 27 (from left to right).

% row contains number which are consecutive multiple of 13, starting from 26 (from left to right).

# row contains number which are consecutive multiple of 17, starting from 17 (from left to right).

The matrix helps in producing signals which can be either a single string of number X- or two-line string X and Y.

There are 4 lights P, Q, R and S. Based on the outcome of the strings mentioned above one of the light blinks.

**Condition for blink:**

1. If the outcome is below 78, then P will blink

2. If outcome range is 78-100, then Q blinks
3. If outcome range is 100-201, then R blinks
4. If outcome is greater than 201, then S blinks

**For outcome of the string:**

1. If the string has all odd numbers, then outcome of the string is obtained by adding all the ten's place of the two-digit numbers.
2. If an even number followed by an odd prime number then the one's places of all the two-digit numbers are deleted and, tenth place are multiplied to get the outcome
3. If the string contains two even numbers, then the outcome of the string is obtained by the subtraction of sum of even number and sum of odd numbers.
4. If no above logic is followed, then simple outcome is addition of the numbers.

If  $x = @A \#C @E$  &  $Y = @A \%B @B \%A$ , and the outcome will be  $X*Y$  then which bulb blink? **(2 Mark)**

- A. Q
- B. P
- C. S
- D. R
- E. Either R or S

**Answer : B,**

**Solution :**

From the above given conditions the matrix will be---

Rows↓/Column→	A	B	C	D	E
#	17	34	51	68	85
%	26	39	52	65	78
@	27	36	45	54	63

$$x = @A \#C @E$$

$$\text{So, } x = 27 \ 51 \ 63$$

As it is clear that condition (1) is applicable in the above ques so X will be—

$$x = 2 + 5 + 6 = 13$$

$$\text{And } Y = @A \%B @B \%A$$

As it is clear that condition (3) is applicable in the above ques so Y will be—

$$\text{So, } Y = 27 \ 39 \ 36 \ 26$$

$$\text{Outcome} = \{(39+27) - (36+26)\} = 4$$

$$\text{Now, } X*Y = 13*4 = 52$$

As the outcome is below 78, so clearly P will blink.



Q.7 **Essay** : 6-10):Passage:

**Study the information carefully and answer the questions given below.**

There is  $3 \times 5$  matrix which can produce signals which in turn help in the illumination of some bulbs. The row of the matrix are denoted by @, % and # from bottom to top and the columns are denoted by the alphabets A, B, C D and E from left to right.

@ row contains number which are consecutive multiple of 9, starting from 27 (from left to right).

% row contains number which are consecutive multiple of 13, starting from 26 (from left to right).

# row contains number which are consecutive multiple of 17, starting from 17 (from left to right).

The matrix helps in producing signals which can be either a single string of number X- or two-line string X and Y.

There are 4 lights P, Q, R and S. Based on the outcome of the strings mentioned above one of the light blinks.

**Condition for blink:**

1. If the outcome is below 78, then P will blink
2. If outcome range is 78-100, then Q blinks
3. If outcome range is 100-201, then R blinks
4. If outcome is greater than 201, then S blinks

**For outcome of the string:**

1. If the string has all odd numbers, then outcome of the string is obtained by adding all the ten's place of the two-digit numbers.
2. If an even number followed by an odd prime number then the one's places of all the two-digit numbers are deleted and, tenth place are multiplied to get the outcome
3. If the string contains two even numbers, then the outcome of the string is obtained by the subtraction of sum of even number and sum of odd numbers.
4. If no above logic is followed, then simple outcome is addition of the numbers.

If  $X = \#D \#A \%D @C$ , then which bulb blink? **(2 Mark)**

- A. S
- B. Q
- C. P
- D. R
- E. Either R or S

**Answer : D,**

**Solution :**

From the above given conditions the matrix will be---

Rows↓/Column→	A	B	C	D	E
#	17	34	51	68	85
%	26	39	52	65	78
@	27	36	45	54	63

$X = \#D \#A \%D @C$

So,  $X = 68\ 17\ 65\ 45$

As it is clear that condition (2) is applicable in the above ques so the outcome will be—

Outcome =  $6 * 1 * 6 * 4 = 144$

As the outcome is between 100-201, so clearly R will blink.

Q.8 **Essay** : 6-10):Passage:

**Study the information carefully and answer the questions given below.**

There is  $3 \times 5$  matrix which can produce signals which in turn help in the illumination of some bulbs. The row of the matrix are denoted by @, % and # from bottom to top and the columns are denoted by the alphabets A, B, C D and E from left to right.

@ row contains number which are consecutive multiple of 9, starting from 27 (from left to right).

% row contains number which are consecutive multiple of 13, starting from 26 (from left to right).

# row contains number which are consecutive multiple of 17, starting from 17 (from left to right).

The matrix helps in producing signals which can be either a single string of number X- or two-line string X and Y.

There are 4 lights P, Q, R and S. Based on the outcome of the strings mentioned above one of the light blinks.

**Condition for blink:**

1. If the outcome is below 78, then P will blink
2. If outcome range is 78-100, then Q blinks
3. If outcome range is 100-201, then R blinks
4. If outcome is greater than 201, then S blinks

**For outcome of the string:**

1. If the string has all odd numbers, then outcome of the string is obtained by adding all the ten's place of the two-digit numbers.
2. If an even number followed by an odd prime number then the one's places of all the two-digit numbers are deleted and, tenth place are multiplied to get the outcome
3. If the string contains two even numbers, then the outcome of the string is obtained by the subtraction of sum of even number and sum of odd numbers.

4. If no above logic is followed, then simple outcome is addition of the numbers.

If  $X = \#E \%B @E$  &  $Y = @A \%B$ , and the outcome will be  $X*Y$  then which bulb blink? (2 Mark)

- A. S
- B. Q
- C. P
- D. R
- E. Either P or Q

**Answer : B,**

**Solution :**

From the above given conditions the matrix will be---

Rows↓/Column→	A	B	C	D	E
#	17	34	51	68	85
%	26	39	52	65	78
@	27	36	45	54	63

$$X = \#E \%B @E$$

$$\text{So, } X = 85 \ 39 \ 63$$

As it is clear that condition (1) is applicable in the above ques so the outcome will be—

$$\text{Outcome} = 8+3+6 = 17$$

$$\text{And } Y = @A \%B$$

$$\text{So, } Y = 27 \ 39$$

As it is clear that condition (1) is applicable in the above ques so the outcome will be—

$$\text{Outcome} = 2+3 = 5$$

$$\text{Now, } X*Y = 17*5 = 85$$

As the outcome is between 78-100, so clearly Q will blink.

Q.9 **Essay** : 6-10):Passage:

**Study the information carefully and answer the questions given below.**

There is  $3*5$  matrix which can produce signals which in turn help in the illumination of some bulbs. The row of the matrix are denoted by @, % and # from bottom to top and the columns are denoted by the alphabets A, B, C D and E from left to right.

@ row contains number which are consecutive multiple of 9, starting from 27 (from left to right).

% row contains number which are consecutive multiple of 13, starting from 26 (from

left to right).

# row contains number which are consecutive multiple of 17, starting from 17 (from left to right).

The matrix helps in producing signals which can be either a single string of number X- or two-line string X and Y.

There are 4 lights P, Q, R and S. Based on the outcome of the strings mentioned above one of the light blinks.

**Condition for blink:**

1. If the outcome is below 78, then P will blink
2. If outcome range is 78-100, then Q blinks
3. If outcome range is 100-201, then R blinks
4. If outcome is greater than 201, then S blinks

**For outcome of the string:**

1. If the string has all odd numbers, then outcome of the string is obtained by adding all the ten's place of the two-digit numbers.
2. If an even number followed by an odd prime number then the one's places of all the two-digit numbers are deleted and, tenth place are multiplied to get the outcome
3. If the string contains two even numbers, then the outcome of the string is obtained by the subtraction of sum of even number and sum of odd numbers.
4. If no above logic is followed, then simple outcome is addition of the numbers.

If  $X = \%B @C @B$  &  $Y = \%E \#A$ , and the outcome will be  $X+Y$  then which bulb blink? **(2 Mark)**

- A. R
- B. Q
- C. P
- D. S
- E. Either R or S

**Answer : A,**

**Solution :**

From the above given conditions the matrix will be---

Rows↓/Column→	A	B	C	D	E
#	17	34	51	68	85
%	26	39	52	65	78
@	27	36	45	54	63

$X = \%B @C @B$

So,  $X = 39\ 45\ 36$

As it is clear that condition (4) is applicable in the above ques so the outcome will be—

Outcome =  $39 + 45 + 36 = 120$

And  $Y = \%E \#A$

So,  $Y = 78\ 17$

As it is clear that condition (2) is applicable in the above ques so the outcome will be—

Outcome =  $7 * 1 = 7$

Now,  $X + Y = 120 + 7 = 127$

As the outcome is between 100-201, so clearly R will blink.

Q.10 **Essay** : 6-10):Passage:

**Study the information carefully and answer the questions given below.**

There is  $3 \times 5$  matrix which can produce signals which in turn help in the illumination of some bulbs. The row of the matrix are denoted by @, % and # from bottom to top and the columns are denoted by the alphabets A, B, C D and E from left to right.

@ row contains number which are consecutive multiple of 9, starting from 27 (from left to right).

% row contains number which are consecutive multiple of 13, starting from 26 (from left to right).

# row contains number which are consecutive multiple of 17, starting from 17 (from left to right).

The matrix helps in producing signals which can be either a single string of number X- or two-line string X and Y.

There are 4 lights P, Q, R and S. Based on the outcome of the strings mentioned above one of the light blinks.

**Condition for blink:**

1. If the outcome is below 78, then P will blink
2. If outcome range is 78-100, then Q blinks
3. If outcome range is 100-201, then R blinks
4. If outcome is greater than 201, then S blinks

**For outcome of the string:**

1. If the string has all odd numbers, then outcome of the string is obtained by adding all the ten's place of the two-digit numbers.
2. If an even number followed by an odd prime number then the one's places of all the two-digit numbers are deleted and, tenth place are multiplied to get the outcome
3. If the string contains two even numbers, then the outcome of the string is obtained by the subtraction of sum of even number and sum of odd numbers.
4. If no above logic is followed, then simple outcome is addition of the numbers.

If  $X = @C@B@D\#A\%E$ , then which bulb blink? (2 Mark)

- A. P
- B. Q
- C. S
- D. R
- E. Either R or S

**Answer : C,**

**Solution :**

From the above given conditions the matrix will be---

Rows↓/Column→	A	B	C	D	E
#	17	34	51	68	85
%	26	39	52	65	78
@	27	36	45	54	63

$X = @C@B@D\#A\%E$

So,  $X = 45\ 36\ 54\ 17\ 78$

As it is clear that condition (2) is applicable in the above ques so the outcome will be—

Outcome =  $4*3*5*1*7 = 420$

As the outcome is greater than 201, so clearly bulb S will blink.

Q.11 **Essay** : 11-12):Passage:

**In each of the following questions, a statement is given, followed by two conclusions. You have to assume everything in the statement to be true, then consider the two conclusions together and decide which of them can be logically follows beyond a reasonable doubt from the information given in the statement. Give answer**

**Statement:** The decision of Microsoft to spend over \$26 billion to buy LinkedIn, the “world’s largest professional network”, is an earnest attempt by the company founded by Bill Gates for continued relevance in a space that it once dominated, to the point of being a monopoly. That space - the technology sector - is nothing like what it was in the 1980s and 1990s, when Microsoft ruled. Over the last decade and a half, the rise of the Internet, social media and smart phones have dramatically altered the contours of this space, giving rise to new and more powerful companies such as Google, facebook and Amazon.

**Conclusions:**

**I.** Virtual space as of today belong to search engines. Facebook is nothing more but a personalized search engine. For Microsoft, understanding this is the key factor; a \$26 billion deal to buy LinkedIn may not result in substantial returns unless it is made relevant to common people and not just professionals.

**II.** The decision of Microsoft is somewhat a pragmatism and fruitful for its software business with the help of professionals linked in with LinkedIn on a global scale. Indeed it is a better buy than Nokia which is a shine losing brand in the midst of market flooding smart phone brands. **(1 Mark)**

- A. if only conclusion I follows,
- B. if only conclusion II follows,
- C. if either I or II follows,
- D. if neither I nor II follows,
- E. if both I and II follow

**Answer : A,**

**Solution :**

I follows because Microsoft wants to continue its relevance in the space which suffered a setback due to the emergence of new companies. The conclusion gives us the route or the method, it must follow to achieve it. II does not follow because nothing is mentioned about the comparison between Nokia and LinkedIn in the statement.

Q.12 **Essay : 11-12):**Passage:

**In each of the following questions, a statement is given, followed by two conclusions. You have to assume everything in the statement to be true, then consider the two conclusions together and decide which of them can be logically follows beyond a reasonable doubt from the information given in the statement. Give answer**

**Statement:** Novak Djokovic has completed the Career Grand Slam - winning each of the four majors at least once - become easier in men's tennis, with the increased homogeneity of surfaces and playing styles. He became the third man to hold all four major titles at once and the first ever to do so on three different surfaces (hard court, clay and grass). It also made him the sixth man to win grand slam singles titles on clay, grass and hard courts.

**Conclusions:**

**I.** Novak Djokovic is at the cusp of making another history. In the upcoming times, he

has the opportunity to win the remaining two Grand Slams as well as the gold medal at Rio Olympics.

**II.** There is a lot of hard work and regimented life style behind his consistent performances on the tennis court. He is a product of immense talent, total dedication, rigors of daily training under equally gifted coaches and an insatiable hunger to achieve more. **(1 Mark)**

- A. if only conclusion I follows,
- B. if only conclusion II follows,
- C. if either I or II follows,
- D. if neither I nor II follows,
- E. if both I and II follow

**Answer : B,**

**Solution :**

From the statement, we can't predict about the future. So, I doesn't follow whereas II can be concluded as the qualities of Novak Djokovic has been mentioned in the second one which totally suited according to the statement.

Q.13 **Essay** : 13-17):Passage:

**Study the information given below and answer the given questions.**

16 boxes are placed in a 4\*4 matrix formation. All of them are placed from bottom to top. Box J is to the west of A but J is to the east of P. Box O is placed exactly between box E and box A in a column. Box E is placed above A. Box G is placed at the bottom. Box C is placed immediately above H in a column. Box B is to immediate west of F. Box A is not placed at the bottom. Box L is placed above N in a column. Box P is placed below box B in a column. Box I is placed at the top and immediate east of box M. Box B is not in same row as E. Box C is to the east of B. Less than three boxes are there to the west of O. Box K is not in the west of G. Box D is not placed in the same column as M. Box K is not placed below F in a column.

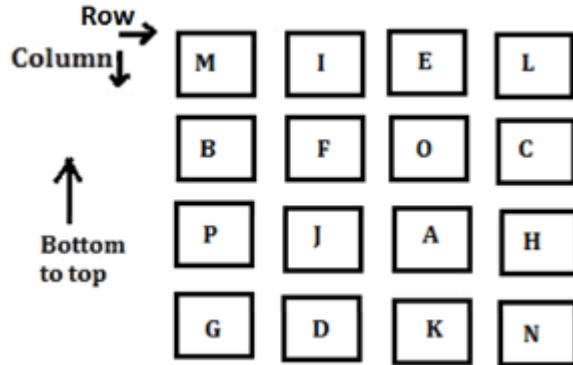
Which of the following box is placed below E in a column? **(1 Mark)**

- A. Box G
- B. Box P
- C. Box C
- D. Box N
- E. Box K



**Answer : E,**

**Solution :**



Q.14 **Essay** : 13-17):Passage:

**Study the information given below and answer the given questions.**

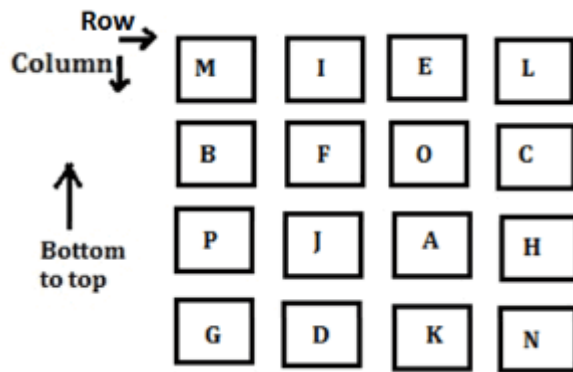
16 boxes are placed in a 4\*4 matrix formation. All of them are placed from bottom to top. Box J is to the west of A but J is to the east of P. Box O is placed exactly between box E and box A in a column. Box E is placed above A. Box G is placed at the bottom. Box C is placed immediately above H in a column. Box B is to immediate west of F. Box A is not placed at the bottom. Box L is placed above N in a column. Box P is placed below box B in a column. Box I is placed at the top and immediate east of box M. Box B is not in same row as E. Box C is to the east of B. Less than three boxes are there to the west of O. Box K is not in the west of G. Box D is not placed in the same column as M. Box K is not placed below F in a column.

Four of the following are alike in a certain way so form a group, which of the following does not belong to that group? **(1 Mark)**

- A. Box I and D
- B. Box B and G
- C. Box C and N
- D. Box E and K
- E. Box P and H

**Answer : E,**

**Solution :**



Q.15 **Essay** : 13-17):Passage:

**Study the information given below and answer the given questions.**

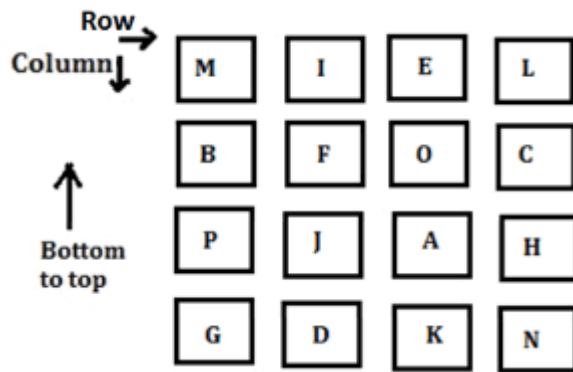
16 boxes are placed in a 4\*4 matrix formation. All of them are placed from bottom to top. Box J is to the west of A but J is to the east of P. Box O is placed exactly between box E and box A in a column. Box E is placed above A. Box G is placed at the bottom. Box C is placed immediately above H in a column. Box B is to immediate west of F. Box A is not placed at the bottom. Box L is placed above N in a column. Box P is placed below box B in a column. Box I is placed at the top and immediate east of box M. Box B is not in same row as E. Box C is to the east of B. Less than three boxes are there to the west of O. Box K is not in the west of G. Box D is not placed in the same column as M. Box K is not placed below F in a column.

Which of the following box is placed immediately above box D? **(1 Mark)**

- A. Box F
- B. Box L
- C. Box M
- D. Box J
- E. None of these

**Answer : D,**

**Solution :**



Q.16 **Essay** : 13-17):Passage:

**Study the information given below and answer the given questions.**

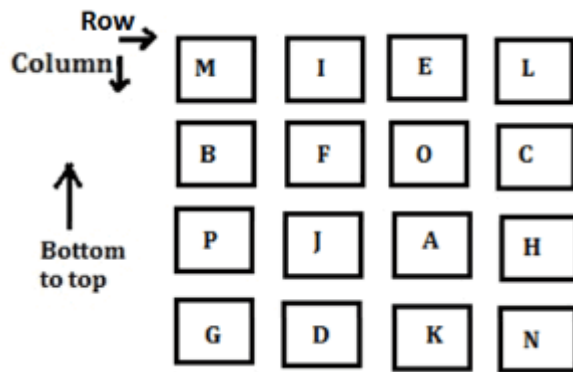
16 boxes are placed in a 4\*4 matrix formation. All of them are placed from bottom to top. Box J is to the west of A but J is to the east of P. Box O is placed exactly between box E and box A in a column. Box E is placed above A. Box G is placed at the bottom. Box C is placed immediately above H in a column. Box B is to immediate west of F. Box A is not placed at the bottom. Box L is placed above N in a column. Box P is placed below box B in a column. Box I is placed at the top and immediate east of box M. Box B is not in same row as E. Box C is to the east of B. Less than three boxes are there to the west of O. Box K is not in the west of G. Box D is not placed in the same column as M. Box K is not placed below F in a column.

Which of the following box is placed immediately west of box C? **(1 Mark)**

- A. Box B
- B. Box A
- C. Box O
- D. Box E
- E. None of these

**Answer : C,**

**Solution :**



Q.17 **Essay** : 13-17):Passage:

**Study the information given below and answer the given questions.**

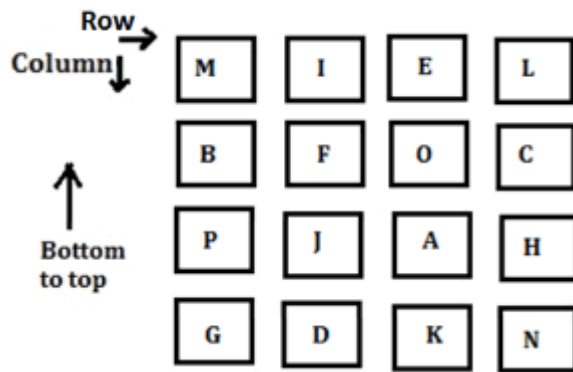
16 boxes are placed in a 4\*4 matrix formation. All of them are placed from bottom to top. Box J is to the west of A but J is to the east of P. Box O is placed exactly between box E and box A in a column. Box E is placed above A. Box G is placed at the bottom. Box C is placed immediately above H in a column. Box B is to immediate west of F. Box A is not placed at the bottom. Box L is placed above N in a column. Box P is placed below box B in a column. Box I is placed at the top and immediate east of box M. Box B is not in same row as E. Box C is to the east of B. Less than three boxes are there to the west of O. Box K is not in the west of G. Box D is not placed in the same column as M. Box K is not placed below F in a column.

Which of the following box is placed exactly between M and P in a column? **(1 Mark)**

- A. Box H
- B. Box F and J
- C. Box B
- D. Box N
- E. None of these

**Answer : C,**

**Solution :**



Q.18 **Essay** : 18-22):Passage:

**Study the following information to answer the given questions.**

A word and number arrangement machine when given an input of words and numbers rearranges them following a particular rule. The following is an illustration of input and rearrangement.

**Input: 52 peak 91 snow freeze 46 cold 15 high 31 73 trek**

Step I: 15 52 peak snow freeze 46 cold high 31 73 trek 91

Step II: 15 31 52 peak snow freeze 46 cold high trek 73 91

Step III: 15 31 46 peak snow freeze cold high trek 52 73 91

Step IV: 15 31 46 cold peak snow freeze high trek 52 73 91

Step V: 15 31 46 cold freeze peak high snow trek 52 73 91

Step VI: 15 31 46 cold freeze high peak snow trek 52 73 91

**Step VI** is the last step of the rearrangement. As per the rules followed in the above steps, find out in each of the following questions the appropriate steps for the given input. Input for the questions.

**Input: 67 hot sun 19 best 83 ice 49 ace 77 cut 37**

How many steps would be needed to complete the arrangement? **(1 Mark)**

- A. X
- B. VIII
- C. IX
- D. VI
- E. None of these

**Answer : D,**

**Solution :**

(i) There are six numbers and six words in the input. The three numbers are placed in

the beginning and the remaining three numbers are placed in the last.

(ii) The numbers are rearranged in ascending order. The six words are rearranged in alphabetical order in the middle.

Input 67 hot sun 19 best 83 ice 49 ace 77 cut 37

Step I 19 67 hot sun best ice 49 ace 77 cut 37 83

Step II 19 37 67 hot sun best ice 49 ace cut 77 83

Step III 19 37 49 hot sun best ice ace cut 67 77 83

Step IV 19 37 49 ace hot best ice cut sun 67 77 83

Step V 19 37 49 ace best hot cut ice sun 67 77 83

Step VI 19 37 49 ace best cut hot ice sun 67 77 83

Six steps are needed to complete the arrangement.

Q.19 **Essay** : 18-22):Passage:

**Study the following information to answer the given questions.**

A word and number arrangement machine when given an input of words and numbers rearranges them following a particular rule. The following is an illustration of input and rearrangement.

**Input: 52 peak 91 snow freeze 46 cold 15 high 31 73 trek**

Step I: 15 52 peak snow freeze 46 cold high 31 73 trek 91

Step II: 15 31 52 peak snow freeze 46 cold high trek 73 91

Step III: 15 31 46 peak snow freeze cold high trek 52 73 91

Step IV: 15 31 46 cold peak snow freeze high trek 52 73 91

Step V: 15 31 46 cold freeze peak high snow trek 52 73 91

Step VI: 15 31 46 cold freeze high peak snow trek 52 73 91

**Step VI** is the last step of the rearrangement. As per the rules followed in the above steps, find out in each of the following questions the appropriate steps for the given input. Input for the questions.

**Input: 67 hot sun 19 best 83 ice 49 ace 77 cut 37**

Which step number would be the following output?

19 37 49 ace best hot cut ice sun 67 77 83 **(1 Mark)**

A. II

- B. VI
- C. V
- D. IV
- E. None of these

**Answer : C,**

**Solution :**

(i) There are six numbers and six words in the input. The three numbers are placed in the beginning and the remaining three numbers are placed in the last.

(ii) The numbers are rearranged in ascending order. The six words are rearranged in alphabetical order in the middle.

Input 67 hot sun 19 best 83 ice 49 ace 77 cut 37

Step I 19 67 hot sun best ice 49 ace 77 cut 37 83

Step II 19 37 67 hot sun best ice 49 ace cut 77 83

Step III 19 37 49 hot sun best ice ace cut 67 77 83

Step IV 19 37 49 ace hot best ice cut sun 67 77 83

Step V 19 37 49 ace best hot cut ice sun 67 77 83

Step VI 19 37 49 ace best cut hot ice sun 67 77 83

It is Step V.

Q.20 **Essay** : 18-22):Passage:

**Study the following information to answer the given questions.**

A word and number arrangement machine when given an input of words and numbers rearranges them following a particular rule. The following is an illustration of input and rearrangement.

**Input: 52 peak 91 snow freeze 46 cold 15 high 31 73 trek**

Step I: 15 52 peak snow freeze 46 cold high 31 73 trek 91

Step II: 15 31 52 peak snow freeze 46 cold high trek 73 91

Step III: 15 31 46 peak snow freeze cold high trek 52 73 91

Step IV: 15 31 46 cold peak snow freeze high trek 52 73 91

Step V: 15 31 46 cold freeze peak high snow trek 52 73 91

Step VI: 15 31 46 cold freeze high peak snow trek 52 73 91

**Step VI** is the last step of the rearrangement. As per the rules followed in the above steps, find out in each of the following questions the appropriate steps for the given input. Input for the questions.

**Input: 67 hot sun 19 best 83 ice 49 ace 77 cut 37**

Which of the following would be Step I? **(1 Mark)**

- A. 19 37 49 hot sun best ice ace cut 67 77 83
- B. 83 67 hot sun best ice 49 ace 77 cut 37 19
- C. 19 67 ace best hot sun ice 49 77 cut 37 83
- D. 19 67 hot sun best ice 49 ace 77 cut 37 83
- E. None of these

**Answer : D,**

**Solution :**

(i) There are six numbers and six words in the input. The three numbers are placed in the beginning and the remaining three numbers are placed in the last.

(ii) The numbers are rearranged in ascending order. The six words are rearranged in alphabetical order in the middle.

Input 67 hot sun 19 best 83 ice 49 ace 77 cut 37

Step I 19 67 hot sun best ice 49 ace 77 cut 37 83

Step II 19 37 67 hot sun best ice 49 ace cut 77 83

Step III 19 37 49 hot sun best ice ace cut 67 77 83

Step IV 19 37 49 ace hot best ice cut sun 67 77 83

Step V 19 37 49 ace best hot cut ice sun 67 77 83

Step VI 19 37 49 ace best cut hot ice sun 67 77 83

Option (d) is Step I.

Q.21 **Essay** : 18-22):Passage:

**Study the following information to answer the given questions.**



A word and number arrangement machine when given an input of words and numbers rearranges them following a particular rule. The following is an illustration of input and rearrangement.

**Input: 52 peak 91 snow freeze 46 cold 15 high 31 73 trek**

Step I: 15 52 peak snow freeze 46 cold high 31 73 trek 91

Step II: 15 31 52 peak snow freeze 46 cold high trek 73 91

Step III: 15 31 46 peak snow freeze cold high trek 52 73 91

Step IV: 15 31 46 cold peak snow freeze high trek 52 73 91

Step V: 15 31 46 cold freeze peak high snow trek 52 73 91

Step VI: 15 31 46 cold freeze high peak snow trek 52 73 91

**Step VI** is the last step of the rearrangement. As per the rules followed in the above steps, find out in each of the following questions the appropriate steps for the given input. Input for the questions.

**Input: 67 hot sun 19 best 83 ice 49 ace 77 cut 37**

Which of the following would be the final arrangement? **(1 Mark)**

- A. 67 77 83 ace best hot ice sun 19 37 49
- B. 19 37 49 ace best cut hot ice sun 67 77 83
- C. 19 37 49 67 77 83 ace best cut hot ice sun
- D. 19 37 49 ace ice best cut hot sun 67 77 83
- E. None of these

**Answer : B,**

**Solution :**

(i) There are six numbers and six words in the input. The three numbers are placed in the beginning and the remaining three numbers are placed in the last.

(ii) The numbers are rearranged in ascending order. The six words are rearranged in alphabetical order in the middle.

Input 67 hot sun 19 best 83 ice 49 ace 77 cut 37

Step I 19 67 hot sun best ice 49 ace 77 cut 37 83

Step II 19 37 67 hot sun best ice 49 ace cut 77 83

Step III 19 37 49 hot sun best ice ace cut 67 77 83

Step IV 19 37 49 ace hot best ice cut sun 67 77 83

Step V 19 37 49 ace best hot cut ice sun 67 77 83

Step VI 19 37 49 ace best cut hot ice sun 67 77 83

Option (b) is the final arrangement.

Q.22 **Essay** : 18-22):Passage:

**Study the following information to answer the given questions.**

A word and number arrangement machine when given an input of words and numbers rearranges them following a particular rule. The following is an illustration of input and rearrangement.

**Input: 52 peak 91 snow freeze 46 cold 15 high 31 73 trek**

Step I: 15 52 peak snow freeze 46 cold high 31 73 trek 91

Step II: 15 31 52 peak snow freeze 46 cold high trek 73 91

Step III: 15 31 46 peak snow freeze cold high trek 52 73 91

Step IV: 15 31 46 cold peak snow freeze high trek 52 73 91

Step V: 15 31 46 cold freeze peak high snow trek 52 73 91

Step VI: 15 31 46 cold freeze high peak snow trek 52 73 91

**Step VI** is the last step of the rearrangement. As per the rules followed in the above steps, find out in each of the following questions the appropriate steps for the given input. Input for the questions.

**Input: 67 hot sun 19 best 83 ice 49 ace 77 cut 37**

In Step IV, which of the following word/number would be on 7th position (from the right)? **(1 Mark)**

- A. Sun
- B. Best
- C. 67
- D. Cut
- E. None of these

**Answer : B,**

**Solution :**

(i) There are six numbers and six words in the input. The three numbers are placed in the beginning and the remaining three numbers are placed in the last.

(ii) The numbers are rearranged in ascending order. The six words are rearranged in

alphabetical order in the middle.

Input 67 hot sun 19 best 83 ice 49 ace 77 cut 37

Step I 19 67 hot sun best ice 49 ace 77 cut 37 83

Step II 19 37 67 hot sun best ice 49 ace cut 77 83

Step III 19 37 49 hot sun best ice ace cut 67 77 83

Step IV 19 37 49 ace hot best ice cut sun 67 77 83

Step V 19 37 49 ace best hot cut ice sun 67 77 83

Step VI 19 37 49 ace best cut hot ice sun 67 77 83

In Step IV 'Best' would be seventh from the right.

Q.23 **Essay** : 23-25):Passage:

**Study the following information carefully to answer the given questions.**

M, N, O, P, Q, R, S and T are eight students in the class. They all are overweighed. They join a Fitness club. Different types of high protein diets are referred to them by the Gym trainer. But each of them likes only one of them. Eggs, Banana and milk are referred to them.

Three of them like Banana , two of them like Egg and remaining of three like Milk.

Each one of them has a different weight.

The heaviest does not likes Egg and the lightest does not likes Banana. R is heavier than M and P, but lighter than T and N. Q, who does not likes Banana, is heavier than N and is the second heaviest. S is lighter than P but heavier than M.T, who is fourth heaviest, likes Milk along with P.S does not likes Banana and Egg. N does not likes Egg.

Who is the heaviest among them? **(1 Mark)**

- A. Q
- B. N
- C. O
- D. P
- E. None of these

**Answer : C,**

**Solution :**

O > Q > N > T > R > P > S > M

Students	Diet
M	Egg
N	Banana
O	Banana
P	Milk
Q	Egg
R	Banana
S	Milk
T	Milk

Q.24 **Essay** : 23-25):Passage:**Study the following information carefully to answer the given questions.**

M, N, O, P, Q, R, S and T are eight students in the class. They all are overweighed. They join a Fitness club. Different types of high protein diets are referred to them by the Gym trainer. But each of them likes only one of them. Eggs, Banana and milk are referred to them.

Three of them like Banana , two of them like Egg and remaining of three like Milk. Each one of them has a different weight.

The heaviest does not likes Egg and the lightest does not likes Banana. R is heavier than M and P, but lighter than T and N. Q, who does not likes Banana, is heavier than N and is the second heaviest. S is lighter than P but heavier than M.T, who is fourth heaviest, likes Milk along with P.S does not likes Banana and Egg. N does not likes Egg.

Who among the following is lighter than P? **(1 Mark)**

- A. O
- B. S
- C. Q
- D. R
- E. None of these

**Answer : B,****Solution :**

O&gt; Q&gt; N&gt;T &gt;R&gt; P&gt;S&gt;M

Students	Diet
M	Egg
N	Banana
O	Banana
P	Milk
Q	Egg
R	Banana
S	Milk
T	Milk

Q.25 **Essay** : 23-25):Passage:**Study the following information carefully to answer the given questions.**

M, N, O, P, Q, R, S and T are eight students in the class. They all are overweighted. They join a Fitness club. Different types of high protein diets are referred to them by the Gym trainer. But each of them likes only one of them. Eggs, Banana and milk are referred to them.

Three of them like Banana , two of them like Egg and remaining of three like Milk. Each one of them has a different weight.

The heaviest does not likes Egg and the lightest does not likes Banana. R is heavier than M and P, but lighter than T and N. Q, who does not likes Banana, is heavier than N and is the second heaviest. S is lighter than P but heavier than M.T, who is fourth heaviest, likes Milk along with P.S does not likes Banana and Egg. N does not likes Egg.

Which of the following pairs likes Egg? **(1 Mark)**

- A. RS
- B. MO
- C. OQ
- D. NQ
- E. MQ

**Answer : E,****Solution :**

O&gt; Q&gt; N&gt;T &gt;R&gt; P&gt;S&gt;M

Students	Diet
M	Egg
N	Banana
O	Banana
P	Milk
Q	Egg
R	Banana
S	Milk
T	Milk

Q.26 **Statement:** Govt. has taken decision in many blocks of country that the construction work of highway is given to the private firms of builder operator transfer on the basis of action.

**Assumptions:**

I. Large number of private firms will not answer in the respect of Govt. action.  
II. Many private firms of our country are capable to complete the construction work of highway within given time period.

III. It may be that private firms get financial profit due to govt. builder operated proposed schemes. **(1 Mark)**

- A. Only I and II are implicit.
- B. Only II and III are implicit.
- C. Only II is implicit.
- D. Only I and III are implicit.
- E. None of these

**Answer : B,**

**Solution :**

Only II & III are implicit. It may be possible that private firms can complete the work of highway in a given time and also get financial profit.

Q.27 **Statement:** Through interest rate subvention scheme government of India will provide crop loan to farmers at just 4%.

Which of the following can be **concluded** from the above statement? **(1 Mark)**

- A. Financial condition of farmers will improve
- B. Repayment of loan will be done timely by the farmers.
- C. Small and marginal farmers will be most benefited from this scheme.

- D. Farmers will have to pay less interest on their loan.
- E. Only (a) and (d)

**Answer : E,**

**Solution :**

The subvention scheme will lead to less interest. Hence (d) follows. If the burden of interest lessen, farmers will prosper, Hence (a) follows.

Q.28 **Essay : 28-29):**Passage:

**Study the following information carefully and answer the given questions.**

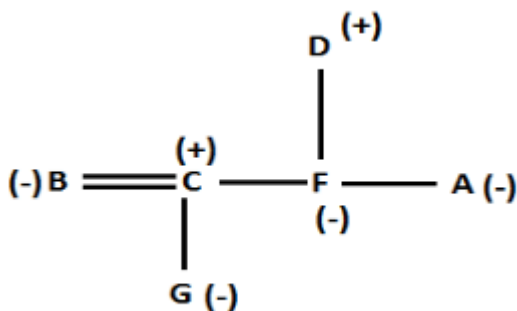
There are six members in a family i.e. A, F, D, B, C, and G. Among them only one married couple and only two males. A, who is unmarried and F are siblings. B's husband has only one child. G is niece of F and D is father of F. C is the only son of D.

How is F related to A's niece? **(1 Mark)**

- A. Son
- B. Father
- C. Mother
- D. Daughter
- E. None of these

**Answer : E,**

**Solution :**



Q.29 **Essay : 28-29):**Passage:

**Study the following information carefully and answer the given questions.**

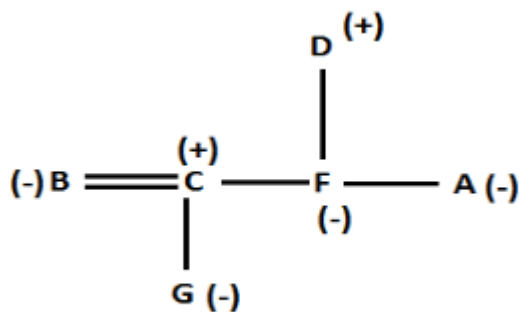
There are six members in a family i.e. A, F, D, B, C, and G. Among them only one married couple and only two males. A, who is unmarried and F are siblings. B's husband has only one child. G is niece of F and D is father of F. C is the only son of D.

Who is daughter-in-law of G's grandfather? **(1 Mark)**

- A. A
- B. B
- C. F
- D. Cannot be determined
- E. None of these

**Answer : B,**

**Solution :**



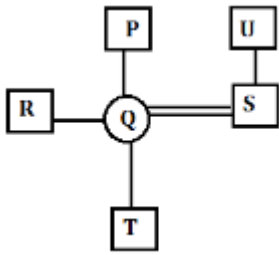
Q.30 There are six members in a family i.e. P, Q, R, S, T, and U. There is only one female in a family. Among them only one married couple. U has only one child, whose father-in-law is P. T is grandchild of P. U is paternal grandparent of T. S is brother-in-law of R and R has no child. How is Q related to U? **(1 Mark)**

- A. Daughter-in-law
- B. Son-in-law
- C. Mother of U's grandson
- D. Both (a) and (c)
- E. None of these

**Answer : D,**

**Solution :**





Q.31 **Essay** : 31-35):Passage:

**Study the following information to answer the given questions:**

In a certain code,

'commit also make policy' is written as '

What is the code for 'mild' ? **(2 Mark)**

- A. @w5
- B.
- C.
- D.
- E. Can't be determined

**Answer : B,**

**Solution :**

This coding decoding question is based on the new pattern. In this, question the words are coded as per following rules.

- (i) Special symbol is used in these as follows:  
# for first letter c, % for first letter m, @ for first letter a, and ! for first letter p
- (ii) Number in codes represents number of alphabets in word.
- (iii) Alphabet in codes represents the last letter of word.

Q.32 **Essay** : 31-35):Passage:

**Study the following information to answer the given questions:**

In a certain code,

'commit also make policy' is written as '

What does '#e6 #e5 @04' stand for? **(2 Mark)**

- A. also make course
- B. craze also course

- C. commit course mobile
- D. artist mild craze
- E. Either “also make course” or “prize also course”

**Answer : B,**

**Solution :**

This coding decoding question is based on the new pattern. In this, question the words are coded as per following rules.

(i) Special symbol is used in these as follows:

# for first letter c, % for first letter m, @ for first letter a, and ! for first letter p

(ii) Number in codes represents number of alphabets in word.

(iii) Alphabet in codes represents the last letter of word.

Q.33 **Essay** : 31-35):Passage:

**Study the following information to answer the given questions:**

In a certain code,

‘commit also make policy’ is written as ‘

Which could be the code for ‘peace protect pump’? **(2 Mark)**

- A. #t4
- B. !e4 !r4 !e2
- C. !p4 @w3 !r4
- D. !e5 !t7 !p4
- E. None of these

**Answer : D,**

**Solution :**

This coding decoding question is based on the new pattern. In this, question the words are coded as per following rules.

(i) Special symbol is used in these as follows:

# for first letter c, % for first letter m, @ for first letter a, and ! for first letter p

(ii) Number in codes represents number of alphabets in word.

(iii) Alphabet in codes represents the last letter of word.

Q.34 **Essay** : 31-35):Passage:

**Study the following information to answer the given questions:**

In a certain code,

'commit also make policy' is written as '

'!18 %n6 @e7' could be a code for which of the following?(2 Mark)

- A. mobile charge victory
- B. peaceful modern advance
- C. against modern effort
- D. mild peaceful west
- E. None of these

**Answer : B,**

**Solution :**

This coding decoding question is based on the new pattern. In this, question the words are coded as per following rules.

(i) Special symbol is used in these as follows:

# for first letter c, % for first letter m, @ for first letter a, and ! for first letter p

(ii) Number in codes represents number of alphabets in word.

(iii) Alphabet in codes represents the last letter of word.

Q.35 **Essay** : 31-35):Passage:

**Study the following information to answer the given questions:**

In a certain code,

'commit also make policy' is written as '

Which of the following is the code for 'anger prize commit'? (2 Mark)

- A. !e5
- B. !e5 @r5 #t6
- C. @r5 #e6 #t6
- D. #t6 @o4
- E. None of thes

**Answer : B,**

**Solution :**

This coding decoding question is based on the new pattern. In this, question the words are coded as per following rules.

(i) Special symbol is used in these as follows:

# for first letter c, % for first letter m, @ for first letter a, and ! for first letter p

(ii) Number in codes represents number of alphabets in word.

(iii) Alphabet in codes represents the last letter of word.

Q.36 **Essay** : 36-40):Passage:

**Read the following information carefully and answer the questions given below:**

Twelve persons i.e. O, P, Q, R, S, T, X, W, U, V, Y and Z who all born on different dates in four different months i.e. January, June, September and December but not necessarily in the same order. Only three persons born in any of the month. Any of the three-person born in June will have birth date after the birth date of each of three person who are born in January and before the birth date of each of the three person born in September and same will follow for the persons who were born in the September and December month as well. No two persons were born on same date (for ex-only one person is born on 2). Only one person born between R and X but none of them born in the month having 31 days. Only three persons born between U and S but neither of them born in the same month as R and X. The one who born immediately before X born on 15. The one who born immediately before U born on 18. The one who born on 15 does not born in a month having 31 days. P born on 26th. Only Z born in between P and S and Z born on an even date. Y is born on an odd date after X but before P. V born on an even date which is greater than 16 but before Y. The one who born last born on last date of the month. No one who born in December born on a date which is a multiple of 5. X was born on an even date. U born on an odd date which is not a multiple of 3. W is born on 5. No one is born on 4 and 10. R born on an even date which is not a multiple of 7. T born immediately before Q and both of them born on even date. V born on the date which is not immediately before U.

How many persons born after R but before the one who born on 25? **(2 Mark)**

- A. Two
- B. Three
- C. More than Four
- D. One
- E. Four

**Answer : E,**

**Solution :**

January	June	September	December
W (5)	R (12)	V (18)	P (26)
T (6)	O (15)	U (23)	Z (28)
Q (8)	X (16)	Y (25)	S (31)

Q.37 **Essay** : 36-40):Passage:**Read the following information carefully and answer the questions given below:**

Twelve persons i.e. O, P, Q, R, S, T, X, W, U, V, Y and Z who all born on different dates in four different months i.e. January, June, September and December but not necessarily in the same order. Only three persons born in any of the month. Any of the three-person born in June will have birth date after the birth date of each of three person who are born in January and before the birth date of each of the three person born in September and same will follow for the persons who were born in the September and December month as well. No two persons were born on same date (for ex-only one person is born on 2). Only one person born between R and X but none of them born in the month having 31 days. Only three persons born between U and S but neither of them born in the same month as R and X. The one who born immediately before X born on 15. The one who born immediately before U born on 18. The one who born on 15 does not born in a month having 31 days. P born on 26th. Only Z born in between P and S and Z born on an even date. Y is born on an odd date after X but before P. V born on an even date which is greater than 16 but before Y. The one who born last born on last date of the month. No one who born in December born on a date which is a multiple of 5. X was born on an even date. U born on an odd date which is not a multiple of 3. W is born on 5. No one is born on 4 and 10. R born on an even date which is not a multiple of 7. T born immediately before Q and both of them born on even date. V born on the date which is not immediately before U.

Who among the following pair of persons born in the same month? **(2 Mark)**

- A. W and V
- B. V and P
- C. Q and U
- D. W and R
- E. V and Y

**Answer : E,**

**Solution :**

January	June	September	December
W (5)	R (12)	V (18)	P (26)
T (6)	O (15)	U (23)	Z (28)
Q (8)	X (16)	Y (25)	S (31)

Q.38 **Essay** : 36-40):Passage:**Read the following information carefully and answer the questions given below:**

Twelve persons i.e. O, P, Q, R, S, T, X, W, U, V, Y and Z who all born on different dates in four different months i.e. January, June, September and December but not necessarily in the same order. Only three persons born in any of the month. Any of the three-person born in June will have birth date after the birth date of each of three person who are born in January and before the birth date of each of the three person born in September and same will follow for the persons who were born in the September and December month as well. No two persons were born on same date (for ex-only one person is born on 2). Only one person born between R and X but none of them born in the month having 31 days. Only three persons born between U and S but neither of them born in the same month as R and X. The one who born immediately before X born on 15. The one who born immediately before U born on 18. The one who born on 15 does not born in a month having 31 days. P born on 26th. Only Z born in between P and S and Z born on an even date. Y is born on an odd date after X but before P. V born on an even date which is greater than 16 but before Y. The one who born last born on last date of the month. No one who born in December born on a date which is a multiple of 5. X was born on an even date. U born on an odd date which is not a multiple of 3. W is born on 5. No one is born on 4 and 10. R born on an even date which is not a multiple of 7. T born immediately before Q and both of them born on even date. V born on the date which is not immediately before U.

Who among the following born immediately after Q? **(2 Mark)**

- A. U
- B. W
- C. S
- D. R
- E. None of these

**Answer : D,**

**Solution :**

January	June	September	December
W (5)	R (12)	V (18)	P (26)
T (6)	O (15)	U (23)	Z (28)
Q (8)	X (16)	Y (25)	S (31)

Q.39 **Essay** : 36-40):Passage:**Read the following information carefully and answer the questions given below:**

Twelve persons i.e. O, P, Q, R, S, T, X, W, U, V, Y and Z who all born on different dates in four different months i.e. January, June, September and December but not necessarily in the same order. Only three persons born in any of the month. Any of the three-person born in June will have birth date after the birth date of each of three person who are born in January and before the birth date of each of the three person born in September and same will follow for the persons who were born in the September and December month as well. No two persons were born on same date (for ex-only one person is born on 2). Only one person born between R and X but none of them born in the month having 31 days. Only three persons born between U and S but neither of them born in the same month as R and X. The one who born immediately before X born on 15. The one who born immediately before U born on 18. The one who born on 15 does not born in a month having 31 days. P born on 26th. Only Z born in between P and S and Z born on an even date. Y is born on an odd date after X but before P. V born on an even date which is greater than 16 but before Y. The one who born last born on last date of the month. No one who born in December born on a date which is a multiple of 5. X was born on an even date. U born on an odd date which is not a multiple of 3. W is born on 5. No one is born on 4 and 10. R born on an even date which is not a multiple of 7. T born immediately before Q and both of them born on even date. V born on the date which is not immediately before U.

X born on which of the following date? **(2 Mark)**

- A. 16th
- B. 24th
- C. 20th
- D. 26th
- E. None of these

**Answer : A,**

**Solution :**

January	June	September	December
W (5)	R (12)	V (18)	P (26)
T (6)	O (15)	U (23)	Z (28)
Q (8)	X (16)	Y (25)	S (31)

Q.40 **Essay** : 36-40):Passage:

**Read the following information carefully and answer the questions given below:**

Twelve persons i.e. O, P, Q, R, S, T, X, W, U, V, Y and Z who all born on different dates in four different months i.e. January, June, September and December but not necessarily in the same order. Only three persons born in any of the month. Any of the three-person born in June will have birth date after the birth date of each of three person who are born in January and before the birth date of each of the three person born in September and same will follow for the persons who were born in the September and December month as well. No two persons were born on same date (for ex-only one person is born on 2). Only one person born between R and X but none of them born in the month having 31 days. Only three persons born between U and S but neither of them born in the same month as R and X. The one who born immediately before X born on 15. The one who born immediately before U born on 18. The one who born on 15 does not born in a month having 31 days. P born on 26th. Only Z born in between P and S and Z born on an even date. Y is born on an odd date after X but before P. V born on an even date which is greater than 16 but before Y. The one who born last born on last date of the month. No one who born in December born on a date which is a multiple of 5. X was born on an even date. U born on an odd date which is not a multiple of 3. W is born on 5. No one is born on 4 and 10. R born on an even date which is not a multiple of 7. T born immediately before Q and both of them born on even date. V born on the date which is not immediately before U.

Z was born on which of the following date? **(2 Mark)**

- A. 28th
- B. 24th
- C. 20th
- D. 26th
- E. None of these

**Answer : A,**



**Solution :**

January	June	September	December
W (5)	R (12)	V (18)	P (26)
T (6)	O (15)	U (23)	Z (28)
Q (8)	X (16)	Y (25)	S (31)

Q.41 **Statement:**

The Indian Railways has tied up with Tata Consultancy Services to pilot a system to conduct its recruitment exams online, as the country's largest employer looks to introduce transparency into its operations.

Which of the following **assumptions** is implicit in the given information? (An assumption is something supposed or taken for granted). **(1 Mark)**

- A. Government jobs are the ambition of every youth in the country.
- B. Corruption was never an issue in railway recruitment.
- C. Online examination will reduce corruption and bring transparency.
- D. Cheating in examinations will be wiped out.
- E. All examinations for major recruitments in the country will be conducted online.

**Answer : C,**

**Solution :**

With the implementation of online exam by the Railways, the corruption in entrance examination can be checked in the years to come.

Q.42 **Statement:**

Next time, when you lose your baggage or meet with an accident while travelling by train, you need not run from pillar to post and wait for years before the cheque lands at your door.

Which of the following can be **inferred** from the given information? (An inference is something that is not directly stated but can be inferred from the given information.) **(1 Mark)**

- A. There will be quick settlement of claims into the customer's account.
- B. All travellers' details will be linked with Aadhaar card.
- C. The loss will be covered by any insurance company through railways.
- D. There will be direct settlement of claim by the IRCTC.

E. None of these

**Answer : A,**

**Solution :**

Note that the statements conveys to us that the delay in compensation is now a thing of the past. We can't infer about the specifics- 'insurance company' in (c) and 'IRCTC' in (d).

Q.43 Which memory appears to exist as main storage although most of it is supported by data held in secondary storage? **(1 Mark)**

- A. Core memory
- B. Virtual memory
- C. RAM
- D. Dynamic memory
- E. None of the above

**Answer : B,**

**Solution :**

Virtual Memory is the memory that appears to exist as main storage although most of it is supported by data held in secondary storage, transfer between the two being made automatically as required.

Q.44 Which among the following options is the application that combines text, sound, graphics, motion video, and/ or animation? **(1 Mark)**

- A. Multimedia
- B. Minimedias
- C. Videoscapes
- D. Motionware
- E. Maxomedia

**Answer : A,**

**Solution :**

Multimedia is content that uses a combination of different content forms such as text,

audio, images, animation, video and interactive content.

Q.45 FORTRAN is a programming language. It is more suitable for \_\_\_\_\_. (1 Mark)

- A. business applications
- B. marketing applications
- C. scientific applications
- D. statically calculative applications
- E. None of these

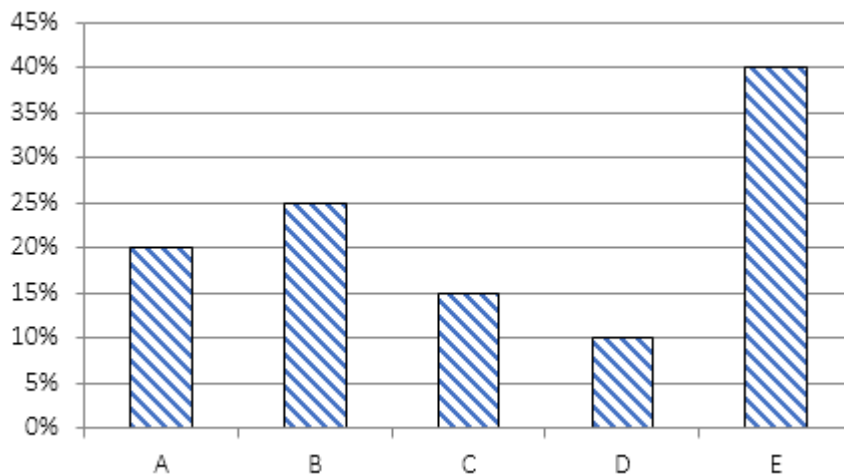
**Answer : C,**

**Solution :**

FORTRAN is the best and only major programming language for scientific applications. It is designed for performing large and complex scientific numerical computing.

Q.46 **Essay : 46-50):**Passage:

**Bar graph given below shows interest rate offered in different schemes. Study the data carefully and answer the following question.**



Amit and Sandeep invested in scheme A and scheme B respectively in the ratio 2 : 3. After two years Sandeep got Rs. 2480 more than Amit. If scheme A offered C.I. and scheme B offered SI, then find the total amount earned by both after 2 years.

**(2 Mark)**

- A. Rs. 19,520
- B. Rs. 29,520

- C. Rs. 29,250  
D. Rs. 29,220  
E. Rs. 29,550

**Answer : B,**

**Solution :**

Let, Amit and Sandeep invested Rs.  $2x$  and Rs.  $3x$  respectively.

ATQ,

$$2480 = \frac{3x \times 25 \times 2}{100} - 2x \left[ \left[ 1 + \frac{20}{100} \right]^2 - 1 \right]$$

$$2480 = 1.5x - 0.88x$$

$$x = \frac{2480}{62} \times 100$$

$$x = 4000$$

Total amount earned after two years

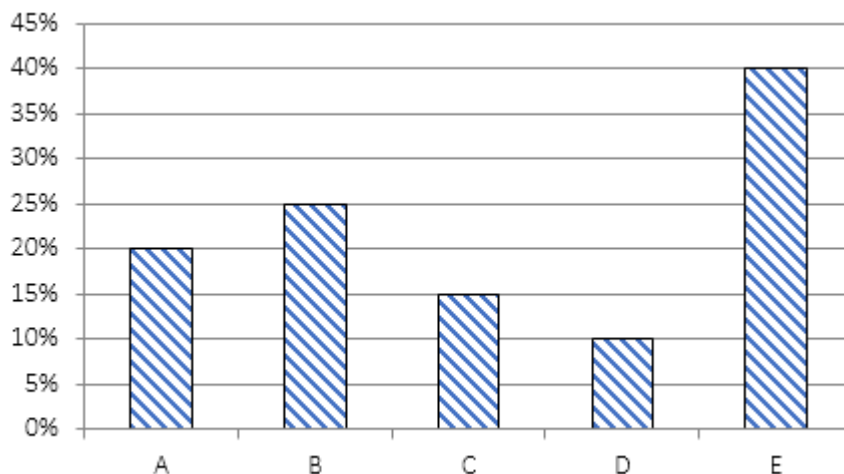
$$= 2 \times 4000 \times \left[ 1 + \frac{20}{100} \right]^2 + 3 \times 4000 + \frac{3 \times 4000 \times 25 \times 2}{100}$$

$$= 11,520 + 12,000 + 6,000$$

$$= 29520$$

Q.47 **Essay** : 46-50):Passage:

**Bar graph given below shows interest rate offered in different schemes. Study the data carefully and answer the following question.**



A man invested Rs. 'X' amount in scheme A and Rs. 'Y' amount in scheme 'E'. After

two years he got equal interest from both schemes. If both schemes offered CI, then find X : Y ? (2 Mark)

- A. 49 : 36
- B. 24 : 11
- C. 7 : 6
- D. 2 : 1
- E. None of the given option

**Answer : B,**

**Solution :**

Interest earned after 2 years from scheme A

$$\begin{aligned} &= X \left[ \left( 1 + \frac{20}{100} \right)^2 - X \right] \\ &= 1.44X - X \\ &= 0.44X \end{aligned}$$

Interest earned after 2 years from scheme E

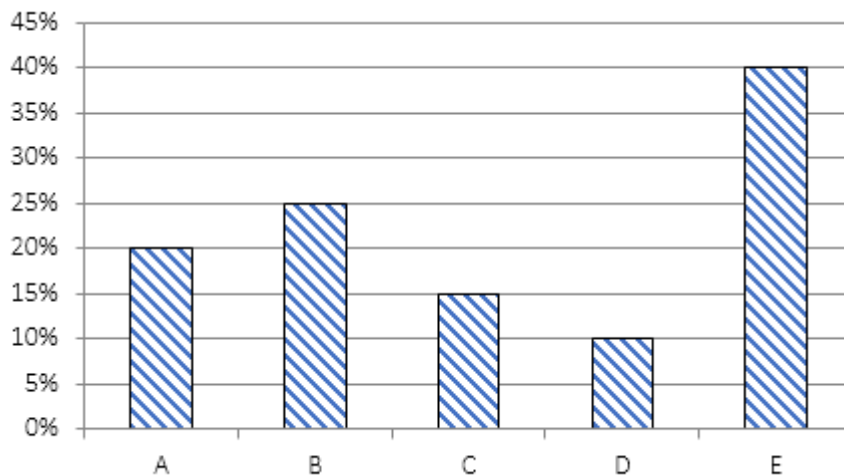
$$\begin{aligned} &= Y \left[ 1 + \frac{40}{100} \right]^2 - Y \\ &= 1.96Y - Y \\ &= 0.96Y \end{aligned}$$

ATQ,

$$\begin{aligned} \frac{0.44X}{0.96Y} &= \frac{1}{1} \\ \Rightarrow \frac{X}{Y} &= \frac{24}{11} \end{aligned}$$

Q.48 **Essay** : 46-50):Passage:

**Bar graph given below shows interest rate offered in different schemes. Study the data carefully and answer the following question.**



Veer invested Rs.  $X$  in scheme 'C' for two years, then he spend total amount (principal + interest) which he get from scheme C in scheme 'D' for 3 years. Scheme 'C' offered at S.I. while scheme 'D' offered at CI. If total interest earned by him from scheme 'D' is Rs. 31,272 more than interest earned by him from scheme 'C'. Find value of ' $2X$ '. **(2 Mark)**

- A. Rs. 0.24 Lakh
- B. Rs. 6 Lakh
- C. Rs. 2.4 Lakh
- D. Rs. 4.8 Lakh
- E. Rs. 0.48 Lakh

**Answer : D,**

**Solution :**

Interest earned from scheme 'C'

$$= \frac{X \times 15 \times 2}{100} = 0.3X$$

Interest earned from scheme 'D'

$$= 1.3X \left[ \left( 1 + \frac{10}{100} \right)^3 - 1 \right]$$

$$= 1.3X [0.331]$$

$$= 0.4303X$$

ATQ,

$$0.4303X - 0.3X = 31,272$$

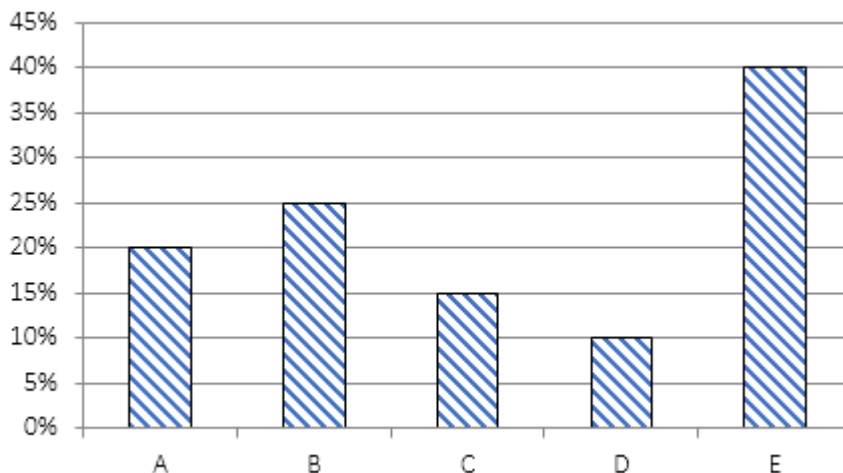
$$0.1303X = 31272$$

$$\Rightarrow X = 2,40,000$$

$$\Rightarrow 2x = 4,80,000$$

Q.49 **Essay** : 46-50):Passage:

**Bar graph given below shows interest rate offered in different schemes. Study the data carefully and answer the following question.**



Two men invested in the rate of 8 : 5 in scheme 'B' and 'E' respectively. If both schemes offered at S.I and both men got same amount. If amount invested in scheme 'B' in for 6 years, then amount invested in scheme 'E' is for how many years? **(2 Mark)**

- A. 8 years
- B. 7.5 years
- C. 9 years
- D. 12 years
- E. 10.5 years

**Answer : B,****Solution :**

Let, amount invested in scheme 'E' is for 'Y' months

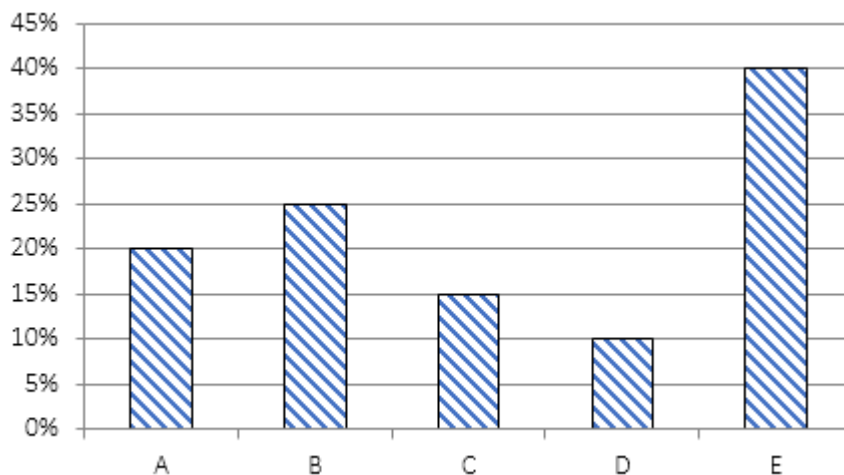
ATQ,

$$8x + \frac{8x \times 25 \times 6}{100} = 5x + \frac{5x \times 40 \times Y}{100}$$

$$20x - 5x = 5x \times \frac{2}{5} \times Y$$

$$\Rightarrow 15x = 5x \times \frac{2}{5} \times Y$$

$$\Rightarrow Y = 7.5 \text{ years}$$

Q.50 **Essay** : 46-50):Passage:**Bar graph given below shows interest rate offered in different schemes. Study the data carefully and answer the following question.**

A man invested in all schemes in the ratio 5 : 4 : 3 : 2 : 1 from A to E. In which scheme, he will get maximum interest after one year? **(2 Mark)**

- A. Both A and B
- B. Both A and D
- C. Both B and E
- D. None of the given option
- E. Both A and E

**Answer : A,**



**Solution :**

$$\text{Interest from scheme 'A'} = \frac{5x \times 20}{100} = x$$

$$\text{Interest from scheme 'B'} = \frac{4x \times 25}{100} = x$$

$$\text{Interest from scheme 'C'} = \frac{3x \times 15}{100} = 0.45x$$

$$\text{Interest from scheme 'D'} = \frac{2x \times 10}{100} = 0.2x$$

$$\text{Interest from scheme 'E'} = \frac{x \times 40}{100} = 0.4x$$

Q.51 **Essay** : 51-55):Passage:

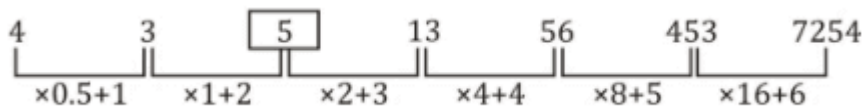
**What comes at the place of questions marks, regarding to given pattern of series**

4, 3, 8, 13, 56, 453, 7254 **(1 Mark)**

- A. 4
- B. 8
- C. 56
- D. 3
- E. 7254

**Answer : B,**

**Solution :**



Q.52 **Essay** : 51-55):Passage:

**What comes at the place of questions marks, regarding to given pattern of series**

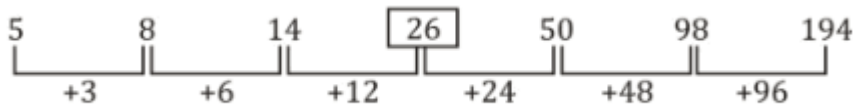
5, 8, 14, 30, 50, 98, 194 **(1 Mark)**

- A. 8

- B. 14
- C. 5
- D. 98
- E. 30

**Answer : E,**

**Solution :**



Q.53 **Essay** : 51-55):Passage:

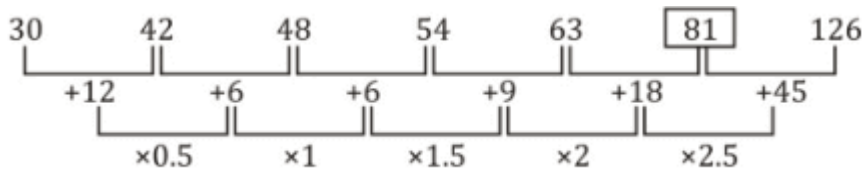
**What comes at the place of questions marks, regarding to given pattern of series**

30, 42, 48, 54, 63, 84, 126 **(1 Mark)**

- A. 30
- B. 48
- C. 42
- D. 84
- E. 126

**Answer : D,**

**Solution :**



Q.54 **Essay** : 51-55):Passage:

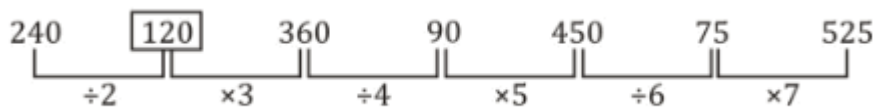
**What comes at the place of questions marks, regarding to given pattern of series**

240, 150, 360, 90, 450, 75, 525 (1 Mark)

- A. 90
- B. 150
- C. 240
- D. 75
- E. 360

**Answer : B,**

**Solution :**



Q.55 **Essay** : 51-55):Passage:

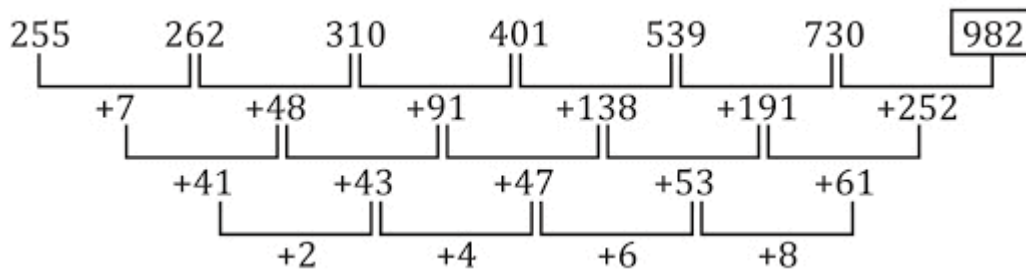
**What comes at the place of questions marks, regarding to given pattern of series**

255, 262, 310, 401, 539, 730, 990 (1 Mark)

- A. 262
- B. 310
- C. 255
- D. 539
- E. 990

**Answer : E,**

**Solution :**



Q.56 Ratio of length and speed of two trains (smaller: longer) are 7: 8 and 4: 3 respectively. Time taken by both trains to cross each other while running in opposite directions is  $12\frac{6}{7}sec$  and time taken by smaller train to cross a platform having length 100 m less than the smaller train is 16 sec. Find time taken by longer train to cross that platform? **(2 Mark)**

- A.  $22\frac{1}{2} sec$
- B.  $23\frac{1}{3} sec$
- C.  $21\frac{2}{3} sec$
- D. 20 sec
- E. None of the given options

**Answer : B,**

**Solution :**

Let length of longer train and smaller train be  $8x$  m and  $7x$  m respectively

And that of speed of longer and smaller train be  $3y$  m/s and  $4y$  m/s respectively

ATQ—

$$(3y + 4y) = \frac{(8x+7x) \times 7}{90}$$

$$15x = 90y$$

$$x = 6y \dots\dots\dots (i)$$

And

$$4y = \frac{7x+(7x-100)}{16}$$

$$64y = 14x - 100 \dots\dots\dots (ii)$$

From (i) and (ii)

$$y = 5$$

$$\text{and } x = 30$$

$$\text{speed of longer train} = 15\text{m/s}$$

$$\text{and length of longer train} = 8 \times 30 = 240 \text{ m}$$

$$\text{required time} = \frac{240+100}{15} = 23\frac{1}{3}sec$$

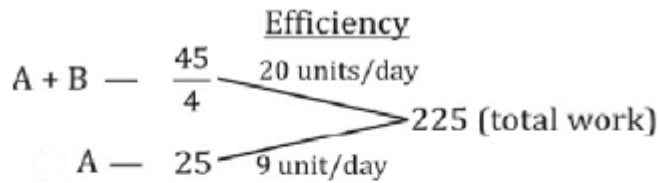
Q.57

A and B together can finish first work in  $11\frac{1}{4}$  days while A alone can do it in 25 days. Both work on second work for 'x' days and (x + 4) days with  $22\frac{2}{9}\%$  more and  $18\frac{2}{11}\%$  less of their respective efficiency respectively and B gets Rs 180 more wages than that of A out of total wages Rs 4140. Find the time taken by both together to complete the second work if they work with their original efficiency?

**(2 Mark)**

- A.  $13\frac{4}{5}$  days
- B.  $12\frac{1}{2}$  days
- C.  $16\frac{2}{3}$  days
- D.  $13\frac{1}{3}$  days
- E. 14 days

**Answer : A,****Solution :**



For second work

$$\text{Efficiency of A} = 9 \times \frac{11}{9} = 11 \text{ units/day}$$

$$\text{Efficiency of B} = 11 \times \frac{9}{11} = 9 \text{ units/day}$$

$$\text{Work done by A} = 11 \times x = 11x \text{ units.}$$

$$\text{Work done by B} = 9 \times (x + 4) = (9x + 36) \text{ units}$$

ATQ,

$$\frac{(9x+36)-11x}{20x+36} = \frac{1}{23}$$

$$\Rightarrow 828 - 46x = 20x + 36$$

$$\Rightarrow 66x = 792$$

$$\Rightarrow x = 12$$

$$\text{Required time} = \left( \frac{20 \times 12 + 36}{20} \right) = 13 \frac{4}{5} \text{ days.}$$

- Q.58 A shopkeeper raised the marked price of an article by 125% and allows three successive discounts of 25%, 20% and  $11\frac{1}{9}\%$  on new marked price and make a profit of 25%. If shopkeeper allows three successive discounts of  $33\frac{1}{3}\%$ ,  $16\frac{2}{3}\%$  and  $12\frac{1}{2}\%$  on new marked price, he would have Rs 255 less profit than earlier, then find cost price of that article? **(2 Mark)**
- A. 2184 Rs.  
B. 2244 Rs.  
C. 2284 Rs.  
D. 2304 Rs.  
E. 2364 Rs.

**Answer : D,**

**Solution :**

Let original marked price be Rs 100x.

Then, New marked price of that article =  $100x \times \frac{225}{100} = Rs\ 225x$

Selling price of article

$$= 225x \times \frac{3}{4} \times \frac{4}{5} \times \frac{8}{9}$$

$$= Rs\ 120x$$

C.P. of article

$$= 120x \times \frac{100}{125}$$

$$= Rs\ 96x$$

$$\text{Profit in first case} = 120x - 96x = 24x$$

2<sup>nd</sup> selling price

$$= 225x \times \frac{7}{8} \times \frac{2}{3} \times \frac{5}{6}$$

$$= Rs\ \frac{875x}{8}$$

ATQ

$$24x - \left( \frac{875x}{8} - 96x \right) = 255$$

$$\frac{85}{8}x = 255$$

$$x = 24$$

$$\text{cost price} = 96 \times 24 = Rs\ 2304$$

- Q.59 Bag A contains 'P' green and 18 yellow balls while bag B contains '(P + 2)' green balls and 22 more number of yellow balls than that of in bag A. Probability of selecting a green ball from bag A is 1/12 more than probability of selecting a green ball from bag B. Find total number of balls in bag B. (P < 50) (2 Mark)
- A. 48  
B. 54  
C. 60  
D. 84  
E. 66

**Answer : A,**

**Solution :**

$$\begin{aligned}\frac{P}{P+18} - \frac{P+2}{42+P} &= \frac{1}{12} \\ \Rightarrow \frac{22P-36}{P^2+60P+756} &= \frac{1}{12} \\ \Rightarrow P^2 - 204P + 1188 &= 0 \\ \Rightarrow P^2 - 198P - 6P + 1188 &= 0 \\ \Rightarrow P = 198 \text{ or } 6 \\ \Rightarrow P &= 6\end{aligned}$$

Required number of balls in bag B = 48.

- Q.60 Ratio of speed of boat P and Q in still water is 2 : 3. If time taken by boat 'Q' to cover a certain distance in upstream is equal to that of 'P' to cover 60% of that distance in upstream and difference of the distance covered by 'Q' and 'P' in 5hr in downstream is 60km then find ratio of speed of boat 'P' in downstream to 'Q' in upstream? (2 Mark)
- A. 3 : 2  
B. 1 : 2  
C. 1 : 1  
D. 4 : 5  
E. 5 : 4

**Answer : C,**

**Solution :**

Let that distance be D km.

And, speed of boat P in still water be 2x km/hr

Speed of boat Q in still water be 3x km/hr

Speed of stream be r km/hr

ATQ -

$$\frac{D}{3x - r} = \frac{3D}{5 \times (2x - r)}$$

$$\text{Or, } x = 2r \dots\dots(i)$$

Also,

$$(3x + r) \times 5 - 5 \times (2x + r) = 60$$



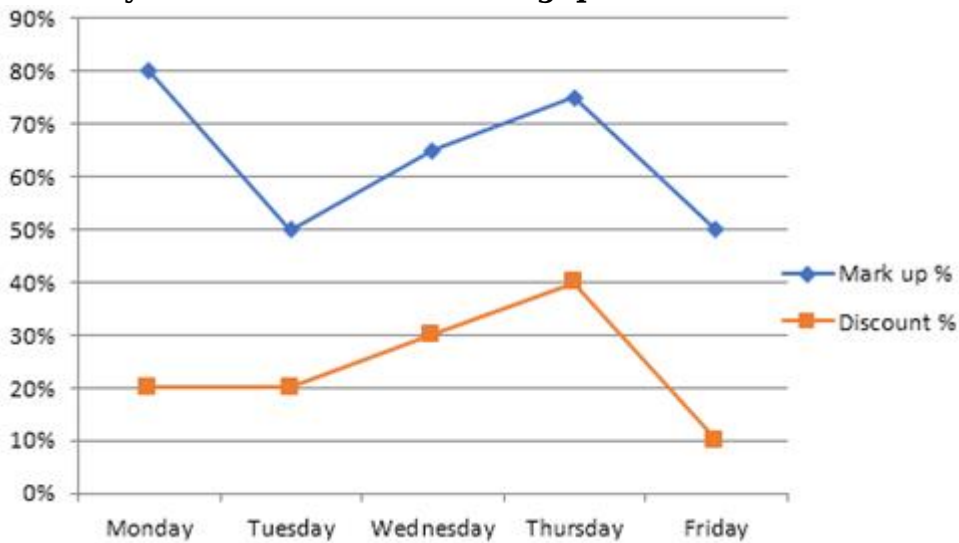
or,  $x = 12$

speed of stream = 6km/hr

Required ratio =  $\frac{30}{30} = 1:1$

Q.61 **Essay** : 61-65):Passage:

**Line chart given below shows markup % above C.P. and discount % given on article X on five different days while table given below shows ratio between mark price of article X to mark price of article Y on these days. Study the data carefully and answer the following questions.**



	Mark price of X : Mark price of Y
Monday	4 : 5
Tuesday	3 : 4
Wednesday	11 : 14
Thursday	7 : 9
Friday	5 : 7

Ratio between cost price of article X on Monday to Thursday is 4 : 5. Retailor earns Rs 75 profit on selling article X on Thursday. Find profit earned on selling

article Y on Monday, if he give 35% discount on marked price of Y while Cost price of article X and Y is same on Monday. **(2 Mark)**

- A. Rs 465
- B. Rs 444
- C. Rs 525
- D. Rs 555
- E. Rs. 585

**Answer : D,**

**Solution :**

Let cost price of article X on Monday and Thursday be  $400x$  and  $500x$  respectively.

Selling price of article X on Thursday

$$= 500x \times \frac{175}{100} \times \frac{60}{100} = 525x$$

ATQ,

$$525x - 500x = 75$$

$$\Rightarrow x = \frac{75}{25} = 3 \text{ Rs.}$$

Mark price of article Y on Monday

$$= 400 \times 3 \times \frac{180}{100} \times \frac{5}{4} = 2700 \text{ Rs.}$$

$$\text{Selling price of article Y} = 2700 \times \frac{65}{100}$$

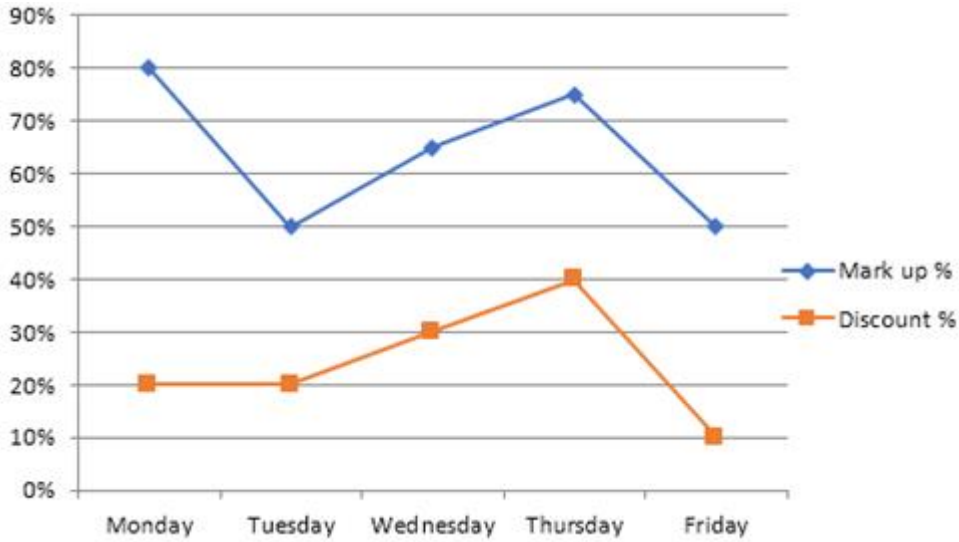
$$= 1755 \text{ Rs.}$$

$$\text{Required profit} = 1755 - 400 \times 3$$

$$= \text{Rs } 555$$

Q.62 **Essay** : 61-65):Passage:

**Line chart given below shows markup % above C.P. and discount % given on article X on five different days while table given below shows ratio between mark price of article X to mark price of article Y on these days. Study the data carefully and answer the following questions.**



	Mark price of X : Mark price of Y
Monday	4 : 5
Tuesday	3 : 4
Wednesday	11 : 14
Thursday	7 : 9
Friday	5 : 7

On selling article X and Y on Friday, retailer earns total Rs 1430 profit. If selling price of article Y is Rs. 520 more than selling price of article X and cost price of article X and Y is same, then find discount percent offered on article Y. **(2 Mark)**

- A.  $33\frac{1}{3}\%$
- B.  $16\frac{2}{3}\%$
- C.  $66\frac{2}{3}\%$
- D. 25%
- E. 12.5%

**Answer : B,**

**Solution :**

Let cost price of article X and Y on Friday =  $100x$

$$\text{Selling price of article X} = 100x \times \frac{150}{100} \times \frac{90}{100}$$

$$= 135x$$

$$\text{Selling price of article Y} = 135x + 520$$

ATQ,

$$135x - 100x + 135x + 520 - 100x = 1430$$

$$\Rightarrow 70x = 910$$

$$\Rightarrow x = 13$$

$$\text{Mark price of article Y on Friday} = 100x \times \frac{150}{100} \times \frac{7}{5} = 210x$$

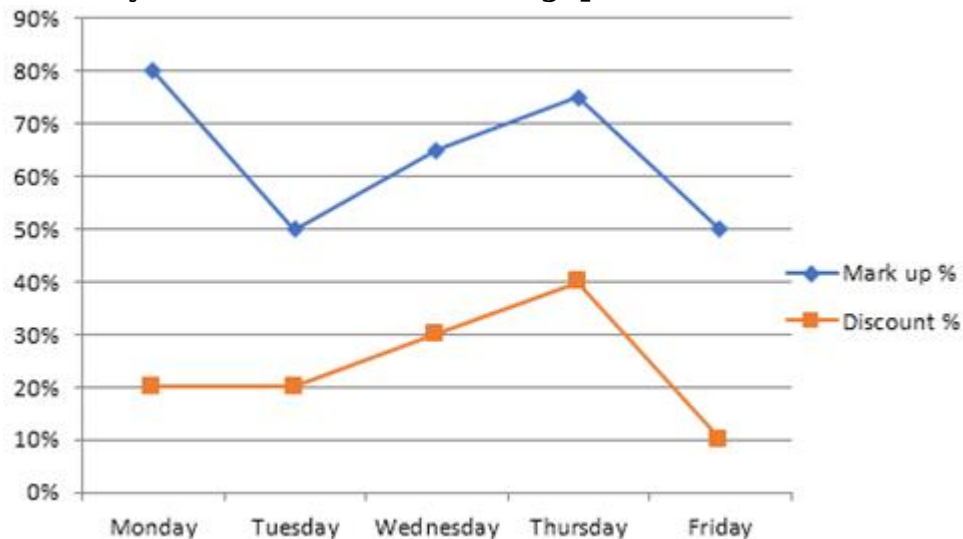
$$= 210 \times 13 = 2730$$

$$\text{Required \%} = \frac{2730 - [135x + 520]}{2730} \times 100$$

$$= \frac{455}{2730} \times 100 = 16\frac{2}{3}\%$$

Q.63 **Essay :** 61-65):Passage:

**Line chart given below shows markup % above C.P. and discount % given on article X on five different days while table given below shows ratio between mark price of article X to mark price of article Y on these days. Study the data carefully and answer the following questions.**



	Mark price of X : Mark price of Y
Monday	4 : 5
Tuesday	3 : 4
Wednesday	11 : 14
Thursday	7 : 9
Friday	5 : 7

Ratio of cost price of article X to article Y on Wednesday is 3 : 4. Retailor earn 26% profit on selling article Y by giving discount of Rs. 1008. Find the difference between selling price of both articles. **(2 Mark)**

- A. Rs. 900
- B. Rs. 540
- C. Rs. 360
- D. Rs. 1080
- E. Rs. 1260

**Answer : E,**

**Solution :**

Let cost price of article X and article Y on Wednesday be  $300x$  and  $400x$

$$\begin{aligned}\text{Mark price of article Y on Wednesday} &= 400x \times \frac{126}{100} + 1008 \\ &= 504x + 1008\end{aligned}$$

$$\text{Mark price of article Y also equals to} = 300x \times \frac{165}{100} \times \frac{14}{11} = 630x$$

$$\Rightarrow 630x = 504x + 1008$$

$$\Rightarrow x = \frac{1008}{126} = 8$$

$$\text{Selling price of article X} = 300x \times \frac{165}{100} \times \frac{70}{100}$$

$$= 300 \times 8 \times \frac{165}{100} \times \frac{70}{100}$$

$$= \text{Rs } 2772$$

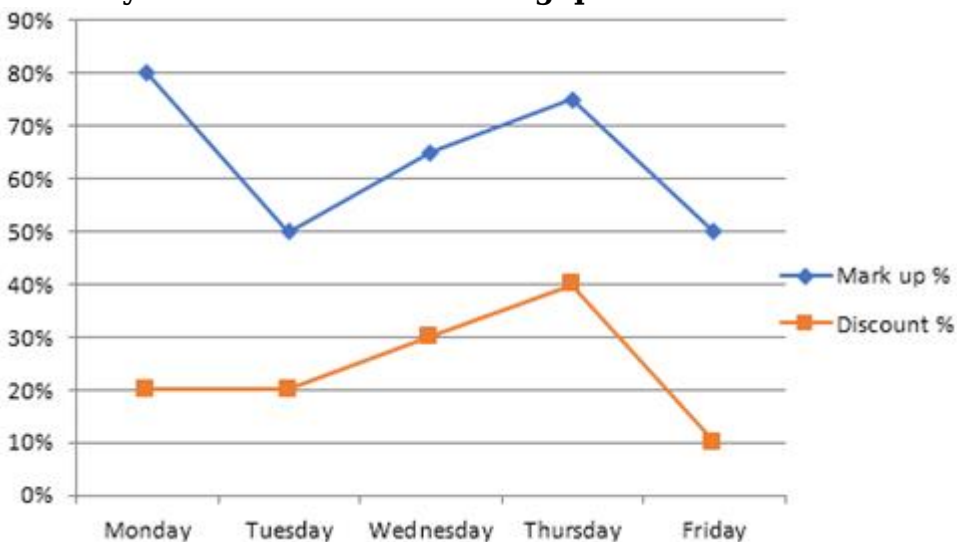
$$\text{Selling price of article Y} = 504x$$

$$= 504 \times 8 = 4032$$

$$\text{Required difference} = 4032 - 2772 = 1260$$

Q.64 **Essay** : 61-65):Passage:

**Line chart given below shows markup % above C.P. and discount % given on article X on five different days while table given below shows ratio between mark price of article X to mark price of article Y on these days. Study the data carefully and answer the following questions.**



	Mark price of X : Mark price of Y
Monday	4 : 5
Tuesday	3 : 4
Wednesday	11 : 14
Thursday	7 : 9
Friday	5 : 7

Find profit percentage earned by retailer on selling article Y on Tuesday at 40% discount if cost price of article Y is 20% less than that of cost price of article X? **(1 Mark)**

- A. 60%
- B. 25%
- C. 50%
- D. 75%
- E. 100%

**Answer : C,**

**Solution :**

Let cost price of article X =  $100x$

Cost price of article Y =  $80x$

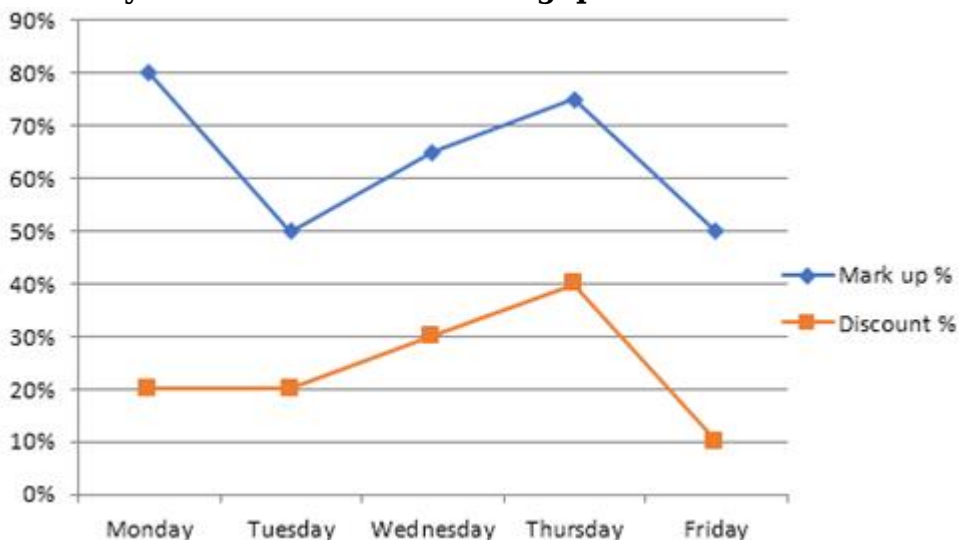
Mark price of article Y on Tuesday =  $100x \times \frac{150}{100} \times \frac{4}{3} = 200x$

Selling price of article Y on Tuesday =  $200x \times \frac{60}{100} = 120x$

Profit % =  $\frac{120x - 80x}{80x} \times 100 = \frac{40}{80} \times 100 = 50\%$

Q.65 **Essay** : 61-65):Passage:

**Line chart given below shows markup % above C.P. and discount % given on article X on five different days while table given below shows ratio between mark price of article X to mark price of article Y on these days. Study the data carefully and answer the following questions.**



	Mark price of X : Mark price of Y
Monday	4 : 5
Tuesday	3 : 4
Wednesday	11 : 14
Thursday	7 : 9
Friday	5 : 7

If profit earned on selling article X on Monday is 176 then find the total profit earned by retailer on selling article X on all five days. It is given that ratio between cost price of article X on respective days starting from Monday to Friday is 1 : 2 : 3 : 4 : 5. **(2 Mark)**

- A. None of the given as option
- B. Rs. 1432
- C. Rs. 1260
- D. Rs. 1302
- E. Rs. 1424

**Answer : D,**

**Solution :**

Let cost price of article X on Monday, Tuesday, Wednesday, Thursday and Friday be  $100x$ ,  $200x$ ,  $300x$ ,  $400x$  and  $500x$  respectively.



$$\text{Profit on selling article X on Monday} = 100x \times \frac{180}{100} \times \frac{80}{100} - 100x = 44x$$

$$\text{Profit on selling article X on Tuesday} = 200x \times \frac{150}{100} \times \frac{80}{100} - 200x = 40x$$

$$\text{Profit on selling article X on Wednesday} = 300x \times \frac{165}{100} \times \frac{70}{100} - 300x = 46.5x$$

$$\text{Profit on selling article X on Thursday} = 400x \times \frac{175}{100} \times \frac{60}{100} - 400x = 20x$$

$$\text{Profit on selling article X on Friday} = 500x \times \frac{150}{100} \times \frac{90}{100} - 500x = 175x$$

$$\text{Total profit} = 44x + 40x + 46.5x + 20x + 175x$$

$$= 325.5x$$

ATQ,

$$44x = 176$$

$$\Rightarrow x = 4$$

$$\text{Total profit} = 325.5x = 325.5 \times 4 = \text{Rs } 1302$$

Q.66 **Essay** : 66-70):Passage:

**The following questions are accompanied by three statements (A), (B), and (C). You have to determine which statement(s) is/are sufficient necessary to answer the questions**

A bag contains some balls of red, black and blue colors. 3 balls are drawn randomly from it. What is the probability that the balls drawn are of three different colors?

(a) Ratio of black and blue colored balls is 4 : 5.

(b) Total number of red and black balls is 5 more than that of blue colored balls.

(c) Total number of balls in that bag is 35 and probability of selecting blue colored balls is  $\frac{3}{7}$ . **(2 Mark)**

A. A and either B or C

B. Any two of them

C. Only A and C together

D. Question can't be answered even after using all the information

E. All statements are required

**Answer : C,**

**Solution :**

A → Let number of black and blue colored balls be  $4x$  and  $5x$  respectively.

B → Let number of red colored balls be  $y$

So,  $y+4x=5x+5$

C →  $\frac{5x}{35} = \frac{3}{7}$  or  $x = 3$

From A and C

Blue = 15

Black = 12

Red = 8

So, required probability =  $\frac{{}^8C_1 \times {}^{12}C_1 \times {}^{15}C_1}{{}^{35}C_3} = \frac{288}{1309}$

Q.67 **Essay** : 66-70):Passage:

**The following questions are accompanied by three statements (A), (B), and (C). You have to determine which statement(s) is/are sufficient necessary to answer the questions**

Find area of a rectangle if its perimeter is equal to the perimeter of a square.

**(a)** Length and breadth of the rectangle are in the ratio of 4 :3 and side of a square is half of the sum of length and breadth of that rectangle.

**(b)** Sum of the lengths of diagonals of the rectangle is 4m less than thrice of the side of square.

**(c)** Area of a square is  $784 \text{ m}^2$  **(2 Mark)**

- A. Only A and B together
- B. Only A and C together
- C. All the three together
- D. Any two of the three together
- E. Either A and B together or A and C together

**Answer : E,**

**Solution :**

A → Let the length and breadth of the rectangle be  $4x$  m and  $3x$  m respectively.

Side of that square =  $\frac{4x+3x}{2} = 3.5x$  m

B → Sum of the lengths of diagonals of the rectangle = (Side of square)  $\times 3 - 4$

C → Area of a square =  $784$  m<sup>2</sup>

Hence, the question can be answered by using any two of the three statements together.

Hence, It can be solved either by A and B together or by A and C together

Q.68 **Essay** : 66-70):Passage:

**The following questions are accompanied by three statements (A), (B), and (C). You have to determine which statement(s) is/are sufficient necessary to answer the questions**

What is the value of a two digit number?

(a) The sum of the number and its square is 25 times the number itself.

(b) The number obtained after interchanging the digits is greater than the original number by 18.

(c) The ratio of the value of the number and the sum of the digits of that number is 4 : 1. **(2 Mark)**

- A. Either A alone or B and C together
- B. All the three together
- C. Any one of the three
- D. All the three together are not sufficient
- E. Either A or B alone

**Answer : A,**

**Solution :**

Let the ten's place and unit's place digits of the number be  $x$  and  $y$  respectively.

And, the number be  $10x + y = z$

A →  $z+z^2=25z$

⇒  $z = 24$

B →  $(10y + x) - (10x + y) = 18$

⇒  $y - x = 2$

C →  $\frac{10x+y}{x+y} = \frac{4}{1}$

⇒  $y = 2x$

Hence, either A alone or B and C together are sufficient to answer the question.

Q.69 **Essay** : 66-70):Passage:

**The following questions are accompanied by three statements (A), (B), and (C). You have to determine which statement(s) is/are sufficient necessary to answer the questions**

What is the selling price of an article if the marked price of that article is 60% above the cost price of that article?

(a) The article is sold at 12% profit and there are two successive discounts of 20% and  $12\frac{1}{2}\%$  on marked price.

(b) Difference of marked price and the cost price of that article is Rs 480.

(c) The marked price is Rs.384 more than the selling price of that article. **(2**

**Mark)**

- A. Only B and C together
- B. Any two of three are sufficient
- C. Either A and B together or A and C together
- D. Only A and C together
- E. All the three together

**Answer : B,**

**Solution :**

Let the cost price be Rs 100x

Then Marked price =  $100x \times 1.6 = Rs\ 160x$

A → SP = 112% of CP

And SP =  $160x \times \frac{4}{5} \times \frac{7}{8} = Rs\ 112x$

B → MP - CP = Rs 480

C → MP = SP + 384

Hence, Any two of three statements are sufficient to answer the question.

Q.70 **Essay** : 66-70):Passage:

**The following questions are accompanied by three statements (A), (B), and (C). You have to determine which statement(s) is/are sufficient necessary to answer the questions**

Three friends A, B and C invested in a scheme. Find the profit share of A?

(a) Investment of A, B and C is in the ratio 9: 12: 10 and share of C in profit is Rs.1800

(b) A and B invested Rs.8100 and Rs.10800 for 10 months respectively and profit share of B is 100% of the profit share of C.

(c) A invested Rs 900 more than that of C and investment period of B is 10 months. **(2 Mark)**

- A. A and B together only
- B. Either A and B or A and C
- C. Any two of them
- D. Either B alone or A and C together
- E. Either A and C or B and C

**Answer : A,**

**Solution :**

	<b>A</b>	<b>:</b>	<b>B</b>	<b>:</b>	<b>C</b>
From A and B	8100×10	<b>:</b>	10800×10	<b>:</b>	
	9	<b>:</b>	12	<b>:</b>	

Profit share of B= Rs 1800

$$\text{Profit share of A} = \frac{1800}{12} \times 9 = \text{Rs } 1350$$

A and B together only are sufficient to answer this question

Q.71 A mixture contains milk and water in the ratio of 9 : 2. 44 lit of mixture is taken out and 12 lit of water is added to it, such that ratio of milk to water becomes 3:1. Now another mixture of 64 lit having milk and water in ratio of 3:5 is added to it. Find ratio of milk to water in the final mixture? **(2 Mark)**

- A. 32 : 17
- B. 34 : 19
- C. 7 : 4
- D. 24 : 11
- E. 33 : 19

**Answer : E,**

**Solution :**

Let initial quantity of milk and water be  $9x$  lit and  $2x$  lit respectively.

ATQ

$$\frac{9x - 44 \times \frac{9}{11}}{2x - 44 \times \frac{2}{11} + 12} = \frac{3}{1}$$

$$\Rightarrow x = 16 \text{ lit}$$

$$\text{New quantity of milk} = 9 \times 16 - 36 + 64 \times \frac{3}{8} = 132 \text{ lit}$$

$$\text{And that of water} = 2 \times 16 - 8 + 12 + 64 \times \frac{5}{8} = 76 \text{ lit}$$

$$\text{Required ratio} = \frac{132}{76} = 33:19$$

- Q.72 Ratio of present age of Simmi & Rimmi is 4 : 3 while ratio of age of Simmi 6 years later to present age of Rina is 3 : 1. Ratio of present age of Rimmi to present age of Rina is 2 : 1. Find average of present age of all the three (in years). **(1 Mark)**
- A. 37
  - B. 36
  - C. 32
  - D. 34
  - E. 38

**Answer : D,**

**Solution :**

Let present age of Simmi and Rimmi be  $4x$  yr and  $3x$  yr respectively

And let present age of Rina be  $y$  yr.

ATQ

$$\frac{4x + 6}{y} = \frac{3}{1}$$

$$4x + 6 = 3y \dots\dots\dots (i)$$

And

$$\frac{3x}{y} = \frac{2}{1}$$

$$\Rightarrow 3x = 2y \dots\dots\dots (ii)$$

From (i) and (ii)

$$y = 18 \text{ yr}$$

present age of Simmi = 48 yr

and that of Rimmi = 36yr

$$\text{required average} = \frac{18+48+36}{3} = 34 \text{ yr}$$

- Q.73 A shopkeeper sells an article at Rs. 720 by making a profit of x% and on interchanging selling price with cost price, it would have a loss of y%. Find the selling price if an article was sold at y% profit whose cost price is Rs.720 (given x : y = 9 : 7) **(2 Mark)**
- A. Rs. 810
  - B. Rs. 800
  - C. Rs. 1100
  - D. Rs. 880
  - E. Rs. 660

**Answer : D,**

**Solution :**

Let the value of x and y be 9a and 7a respectively

$$CP = \frac{720 \times 100}{(100 + 9a)}$$

Now,

$$SP = \frac{720 \times 100}{(100 + 9a)} \text{ \& CP = Rs. 720}$$

ATQ,

$$\frac{720 \times 100 \times 100}{(100 + 9a) \times (100 - 7a)} = 720$$

$$\Rightarrow 10000 = 10000 + 200a - 63a^2$$

$$\Rightarrow 63a^2 - 200a = 0$$

$$\Rightarrow a = 0 \quad \text{or} \quad a = \frac{200}{63}$$

$$\text{Required SP} = \frac{720 \times \left(100 + 7 \times \frac{200}{63}\right)}{100} = 880$$

Q.74 There are two rectangular fields of same area. The length of first rectangular field is a% less than the length of the second field and breadth of the first field is (4a)% greater than the breadth of the second field. Find the value of 'a' if a is non-zero number. **(1 Mark)**

- A. 60
- B. 75
- C. 80
- D. 90
- E. None of these

**Answer : B,**

**Solution :**



Let length and breadth of first rectangular field is  $x$  cm and  $y$  cm respectively

Area of first rectangular field =  $xy$  cm<sup>2</sup>

Length of second field =  $\frac{x \times 100}{(100-a)}$  cm

Breadth of second field =  $\frac{x \times 100}{(100+4a)}$  cm

ATQ,

$$\frac{x \times 100}{(100-a)} \times \frac{y \times 100}{(100+4a)} = xy$$

$$\Rightarrow 10000 = (100 - a)(100 + 4a)$$

$$\Rightarrow 10000 = 10000 + 400a - 100a - 4a^2$$

$$\Rightarrow 4a^2 - 300a = 0$$

$$\Rightarrow a = 0 \text{ or } 75.$$

- Q.75 A sum is divided between Aman and Vikash in the ratio of 3 : 5. Aman purchased a motorbike from his money which depreciates 20% per annum while Vikash invested his amount in a scheme which offers compound interest at 20% per annum. By what percentage, the total sum will change after two years? **(1 Mark)**
- A. 12%
  - B. 14%
  - C. 16%
  - D. 18%
  - E. 20%

**Answer : B,**

**Solution :**

Let the amount of Aman and Vikash be Rs.  $3x$  and  $5x$  respectively.

Total amounts = Rs.  $8x$

Total amounts after 2 years

$$= 3x \times \left(1 - \frac{20}{100}\right)^2 + 5x \times \left(1 + \frac{20}{100}\right)^2$$

$$= \left(3x \times \frac{4}{5} \times \frac{4}{5}\right) + \left(5x \times \frac{6}{5} \times \frac{6}{5}\right)$$

$$= 1.92x + 7.2x = 9.12x$$

Change = Rs.  $9.12x - 8x = \text{Rs. } 1.12x$

$$\% \text{ change} = \frac{1.12x \times 100}{8x} = 14\%$$

Q.76 Essay : 76-80):Passage:

**Data given below shows farmers producing three types of grains. Study the data carefully and answer the following questions.**

Farmers producing CORN is 20% more than farmers producing RICE while number of farmers producing only CORN and only RICE is same. Ratio between farmers producing only WHEAT to farmers producing rice is 3 : 5. Farmers producing WHEAT and CORN but not RICE is twice of farmers producing only WHEAT and RICE. Number of farmers producing only RICE is half of number of farmers producing RICE. Number of farmers producing RICE and CORN is 12% of total number of farmers while number of farmers producing CORN is 48% of total number of farmers. Number of farmers producing all three grains is 16, which is 8 less than number of farmers producing only RICE and WHEAT but not CORN

Find number of farmers producing at least two types of grain are what percent of number of farmers producing at most one type of grain? **(2 Mark)**

- A. 37.5%
- B. 43.75%
- C. 50%
- D. 56.25%
- E. 62.5%

**Answer : D,**

**Solution :**

Let, Number of farmers producing RICE =  $5x$

$\Rightarrow$  Number of famrers producing CORN =  $5x \times \frac{120}{100} = 6x$

Let, Number of farmers producing only RICE and only CORN =  $a$

Farmers producing only WHEAT =  $5x \times \frac{3}{5} = 3x$

Let, Number of farmers producing only WHEAT and RICE =  $y$

$\Rightarrow$  Number of farmers producing only WHEAT and CORN but not RICE =  $2y$

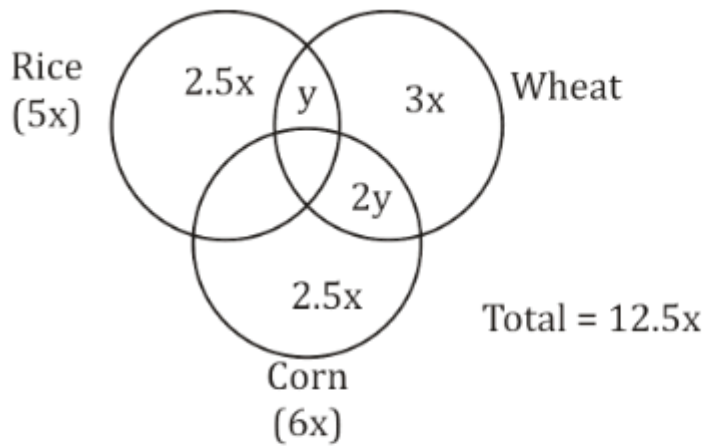
But Number of farmers producing only RICE is half of number of farmers producing RICE.

$\Rightarrow a = 2.5x$

Number of farmers producing CORN is 48% of total farmers =  $6x$

$\Rightarrow 100\% = 12.5x =$  Total number of farmers

Number of farmers producing RICE and CORN =  $\frac{12}{100} \times 12.5x = 1.5x$



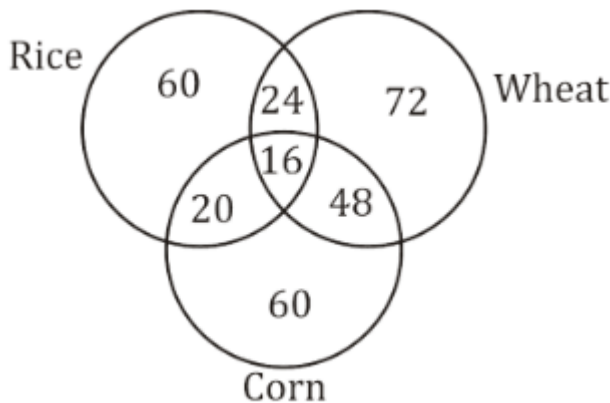
$$\Rightarrow 1.5x + 2.5x + y + 3x + 2y + 2.5x = 12.5x$$

$$\Rightarrow y = x$$

Number of farmers producing only RICE and WHEAT but not CORN = 24 = y

Put value of 'y' in above diagram.

By this we got,



Number of farmers producing at least two types of grain = 24 + 16 + 20 + 48 = 108

Number of farmers producing at most one type of grain = 60 + 72 + 60 = 192

$$\text{Required \%} = \frac{108}{192} \times 100 = 56.25\%$$

Q.77 **Essay** : 76-80):Passage:

**Data given below shows farmers producing three types of grains. Study the data carefully and answer the following questions.**

Farmers producing CORN is 20% more than farmers producing RICE while number of farmers producing only CORN and only RICE is same. Ratio between farmers producing only WHEAT to farmers producing rice is 3 : 5. Farmers producing WHEAT

and CORN but not RICE is twice of farmers producing only WHEAT and RICE. Number of farmers producing only RICE is half of number of farmers producing RICE. Number of farmers producing RICE and CORN is 12% of total number of farmers while number of farmers producing CORN is 48% of total number of farmers. Number of farmers producing all three grains is 16, which is 8 less than number of farmers producing only RICE and WHEAT but not CORN

Number of farmers producing Sugarcane is 25% more than number of farmers producing WHEAT and CORN. Find number of farmers producing Sugarcane? **(2 Mark)**

- A. 80
- B. 50
- C. 60
- D. 45
- E. None of the given options

**Answer : A,**

**Solution :**

Let, Number of farmers producing RICE =  $5x$

$$\Rightarrow \text{Number of farmers producing CORN} = 5x \times \frac{120}{100} = 6x$$

Let, Number of farmers producing only RICE and only CORN =  $a$

$$\text{Farmers producing only WHEAT} = 5x \times \frac{3}{5} = 3x$$

Let, Number of farmers producing only WHEAT and RICE =  $y$

$$\Rightarrow \text{Number of farmers producing only WHEAT and CORN but not RICE} = 2y$$

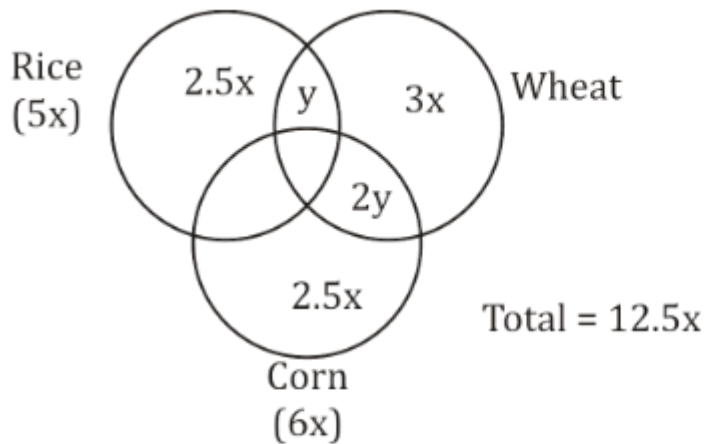
But Number of farmers producing only RICE is half of number of farmers producing RICE.

$$\Rightarrow a = 2.5x$$

Number of farmers producing CORN is 48% of total farmers =  $6x$

$$\Rightarrow 100\% = 12.5x = \text{Total number of farmers}$$

$$\text{Number of farmers producing RICE and CORN} = \frac{12}{100} \times 12.5x = 1.5x$$



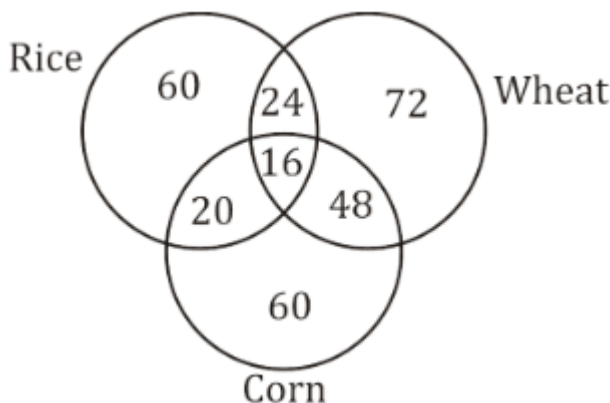
$$\Rightarrow 1.5x + 2.5x + y + 3x + 2y + 2.5x = 12.5x$$

$$\Rightarrow y = x$$

Number of farmers producing only RICE and WHEAT but not CORN = 24 = y

Put value of 'y' in above diagram.

By this we got,



Number of farmers producing WHEAT and CORN = 16 + 48 = 64

Number of farmers producing Sugarcane =  $64 \times \frac{125}{100} = 80$

Q.78 **Essay** : 76-80):Passage:

**Data given below shows farmers producing three types of grains. Study the data carefully and answer the following questions.**

Farmers producing CORN is 20% more than farmers producing RICE while number of farmers producing only CORN and only RICE is same. Ratio between farmers producing only WHEAT to farmers producing rice is 3 : 5. Farmers producing WHEAT and CORN but not RICE is twice of farmers producing only WHEAT and RICE. Number

of farmers producing only RICE is half of number of farmers producing RICE.  
Number of farmers producing RICE and CORN is 12% of total number of farmers  
while number of farmers producing CORN is 48% of total number of farmers. Number  
of farmers producing all three grains is 16, which is 8 less than number of farmers  
producing only RICE and WHEAT but not CORN

Find what percent of farmers producing WHEAT out of total farmers? **(1 Mark)**

- A. 24%
- B.  $56\frac{1}{3}\%$
- C.  $53\frac{1}{3}\%$
- D. 40%
- E. 48%

**Answer : C,**

**Solution :**

Let, Number of farmers producing RICE =  $5x$

$\Rightarrow$  Number of farmers producing CORN =  $5x \times \frac{120}{100} = 6x$

Let, Number of farmers producing only RICE and only CORN =  $a$

Farmers producing only WHEAT =  $5x \times \frac{3}{5} = 3x$

Let, Number of farmers producing only WHEAT and RICE =  $y$

$\Rightarrow$  Number of farmers producing only WHEAT and CORN but not RICE =  $2y$

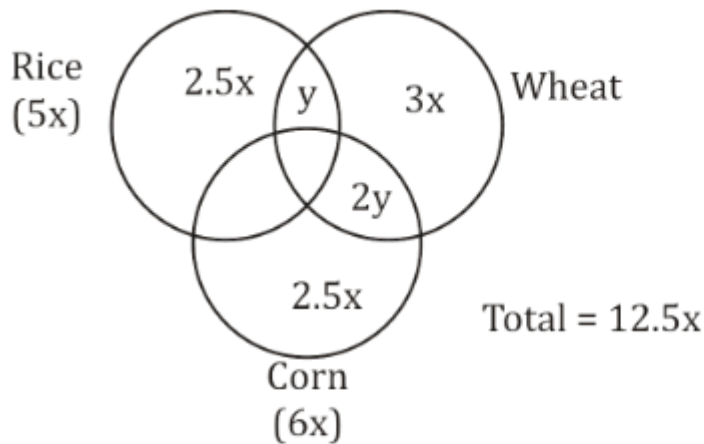
But Number of farmers producing only RICE is half of number of farmers producing RICE.

$\Rightarrow a = 2.5x$

Number of farmers producing CORN is 48% of total farmers =  $6x$

$\Rightarrow 100\% = 12.5x =$  Total number of farmers

Number of farmers producing RICE and CORN =  $\frac{12}{100} \times 12.5x = 1.5x$



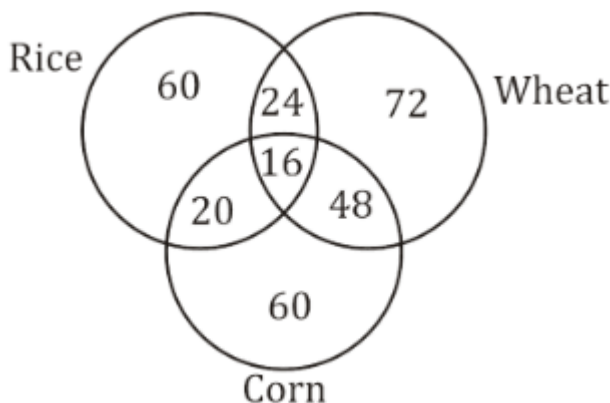
$$\Rightarrow 1.5x + 2.5x + y + 3x + 2y + 2.5x = 12.5x$$

$$\Rightarrow y = x$$

Number of farmers producing only RICE and WHEAT but not CORN = 24 = y

Put value of 'y' in above diagram.

By this we got,



$$\text{Required \%} = \frac{160}{300} \times 100 = 53\frac{1}{3}\%$$

Q.79 **Essay** : 76-80):Passage:

**Data given below shows farmers producing three types of grains. Study the data carefully and answer the following questions.**

Farmers producing CORN is 20% more than farmers producing RICE while number of farmers producing only CORN and only RICE is same. Ratio between farmers producing only WHEAT to farmers producing rice is 3 : 5. Farmers producing WHEAT and CORN but not RICE is twice of farmers producing only WHEAT and RICE. Number of farmers producing only RICE is half of number of farmers producing RICE.

Number of farmers producing RICE and CORN is 12% of total number of farmers while number of farmers producing CORN is 48% of total number of farmers. Number of farmers producing all three grains is 16, which is 8 less than number of farmers producing only RICE and WHEAT but not CORN

Find total number of farmers producing either only RICE or only WHEAT? (2 Mark)

- A. 120
- B. 132
- C. 280
- D. None of the given options
- E. 138

**Answer : B,**

**Solution :**

Let, Number of farmers producing RICE =  $5x$

$\Rightarrow$  Number of farmers producing CORN =  $5x \times \frac{120}{100} = 6x$

Let, Number of farmers producing only RICE and only CORN =  $a$

Farmers producing only WHEAT =  $5x \times \frac{3}{5} = 3x$

Let, Number of farmers producing only WHEAT and RICE =  $y$

$\Rightarrow$  Number of farmers producing only WHEAT and CORN but not RICE =  $2y$

But Number of farmers producing only RICE is half of number of farmers producing RICE.

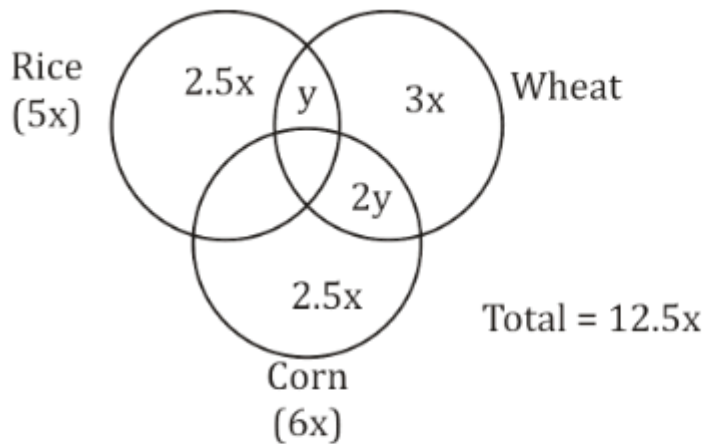
$\Rightarrow a = 2.5x$

Number of farmers producing CORN is 48% of total farmers =  $6x$

$\Rightarrow 100\% = 12.5x =$  Total number of farmers

Number of farmers producing RICE and CORN =  $\frac{12}{100} \times 12.5x = 1.5x$





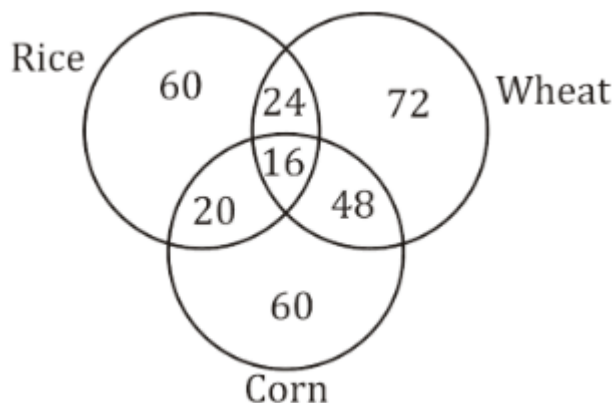
$$\Rightarrow 1.5x + 2.5x + y + 3x + 2y + 2.5x = 12.5x$$

$$\Rightarrow y = x$$

Number of farmers producing only RICE and WHEAT but not CORN = 24 = y

Put value of 'y' in above diagram.

By this we got,



Number of farmers producing wither only RICE or only WHEAT = 60+72=132

Q.80 **Essay** : 76-80):Passage:

**Data given below shows farmers producing three types of grains. Study the data carefully and answer the following questions.**

Farmers producing CORN is 20% more than farmers producing RICE while number of farmers producing only CORN and only RICE is same. Ratio between farmers producing only WHEAT to farmers producing rice is 3 : 5. Farmers producing WHEAT and CORN but not RICE is twice of farmers producing only WHEAT and RICE. Number of farmers producing only RICE is half of number of farmers producing RICE.

Number of farmers producing RICE and CORN is 12% of total number of farmers

while number of farmers producing CORN is 48% of total number of farmers. Number of farmers producing all three grains is 16, which is 8 less than number of farmers producing only RICE and WHEAT but not CORN

Find the ratio between number of farmers producing only two types of grains to farmers producing all three grains? **(2 Mark)**

- A. 27 : 4
- B. None of the given options
- C. 23 : 16
- D. 23 : 8
- E. 23 : 4

**Answer : E,**

**Solution :**

Let, Number of farmers producing RICE =  $5x$

$\Rightarrow$  Number of farmers producing CORN =  $5x \times \frac{48}{100} = 2.4x$

Let, Number of farmers producing only RICE and only CORN =  $a$

Farmers producing only WHEAT =  $5x \times \frac{3}{5} = 3x$

Let, Number of farmers producing only WHEAT and RICE =  $y$

$\Rightarrow$  Number of farmers producing only WHEAT and CORN but not RICE =  $2y$

But Number of farmers producing only RICE is half of number of farmers producing RICE.

$\Rightarrow a = 2.5x$

Number of farmers producing CORN is 48% of total farmers =  $6x$

$\Rightarrow 100\% = 12.5x =$  Total number of farmers

Number of farmers producing RICE and CORN =  $\frac{12}{100} \times 12.5x = 1.5x$



bad shape **as none cares for it**. The initial interest shown by the government and people in conserving the mangroves and mudflats of Kadalundi when the concept of community reserve was launched in 2017 no longer exists. Nothing visible has been done for the community reserve in the last few years. Moreover, a master plan prepared for the facility has been apparently dumped.

**Paragraph 2:** U. Kalanathan, former president of Vallikkunnu grama panchayat and an *outspoken* exponent of mangrove conservation, said that strong political interests shown by those in the managing committee had virtually killed the community reserve.

**Paragraph 3:** “Nothing is taking place at Kadalundi. It is indeed a sad thing. In fact, a lot could have been done to lift this community reserve to a state where the world would take note of it,” said Mr. Kalanathan. At present, a few tour operators are offering sightseeing services in country boats and homestays at Kadalundi. However, the promotion of local tourism in a small way by involving entrepreneurs should not be a mandate for the community reserve managing committee, according to Mr. Kalanathan.

**Paragraph 4:** Unabated dumping of waste in the ecologically fragile estuary continues to be the biggest menace for the community reserve. Some boards warning against dumping of waste at the community reserve have long disappeared.

**Paragraph 5:** Echoing concerns raised by scientists studying the mudflats of Kadalundi and the foraging habits of migratory birds reaching there, Mr. Kalanathan said: “Major changes have taken place in the mangrove and mudflat ecosystems of Kadalundi of late. This does not augur well for both the community reserve and thousands of migratory birds reaching the estuarial mudflats for annual summering.” He demanded that the government take solid and visible action not only to conserve the mangroves of Kadalundi but also to give the community reserve a momentum.

What is the opposite of the phrase “ **as none cares for it**” as mentioned in the Paragraph 1? **(1 Mark)**

- A. The people who are in the managing committee for the Kadalundi-Vallikkunnu Community Reserve don't discuss and take discussion in the managing committee based on their political and personal interests.
- B. The government and people of Kerala have been showing interest and actively committing themselves toward conserving the mangroves and mudflats of Kadalundi.
- C. Involving entrepreneurs is a mandate for the community reserve managing committee.
- D. The existing master plan prepared for the facility will be droppe
- E. None of the above

**Answer : B,**

**Solution :**

The phrase “as none cares for it” is intended to reflect the attitude of the government and people toward conserving the Kadalundi-Vallikkunnu Community Reserve. The passage reflects that the attitude of the government and people is apathetic toward conserving the mentioned community reserve. The opposite of the phrase would be the government and people are actively committing themselves toward conserving the given community reserve. Among the given options, only option (b) correctly reflects the **opposite** of the given phrase.

Hence, the correct answer is the option (b).

Q.82 **Essay** : 81-90):Passage:

**Read the following passage divided into number of paragraphs carefully and answer the questions that follow it.**

**Paragraph 1:** Conservation reserves and community reserves in India are terms denoting protected areas of India which typically act as buffer zones to or connectors and migration corridors between established national parks, wildlife sanctuaries and reserved and protected forests of India. The Kadalundi-Vallikkunnu Community Reserve, the Kerala’s first community reserve with a unique estuarial ecosystem, is in bad shape **as none cares for it**. The initial interest shown by the government and people in conserving the mangroves and mudflats of Kadalundi when the concept of community reserve was launched in 2017 no longer exists. Nothing visible has been done for the community reserve in the last few years. Moreover, a master plan prepared for the facility has been apparently dumped.

**Paragraph 2:** U. Kalanathan, former president of Vallikkunnu grama panchayat and an *outspoken* exponent of mangrove conservation, said that strong political interests shown by those in the managing committee had virtually killed the community reserve.

**Paragraph 3:** “Nothing is taking place at Kadalundi. It is indeed a sad thing. In fact, a lot could have been done to lift this community reserve to a state where the world would take note of it,” said Mr. Kalanathan. At present, a few tour operators are offering sightseeing services in country boats and homestays at Kadalundi. However, the promotion of local tourism in a small way by involving entrepreneurs should not be a mandate for the community reserve managing committee, according to Mr. Kalanathan.

**Paragraph 4:** Unabated dumping of waste in the ecologically fragile estuary continues to be the biggest menace for the community reserve. Some boards warning against dumping of waste at the community reserve have long disappeared.

**Paragraph 5:** Echoing concerns raised by scientists studying the mudflats of

Kadalundi and the foraging habits of migratory birds reaching there, Mr. Kalanathan said: "Major changes have taken place in the mangrove and mudflat ecosystems of Kadalundi of late. This does not augur well for both the community reserve and thousands of migratory birds reaching the estuarial mudflats for annual summering." He demanded that the government take solid and visible action not only to conserve the mangroves of Kadalundi but also to give the community reserve a momentum.

What does the author mean by the term "**outspoken**" as used in Paragraph 2?

- (i) U. Kalanathan crossed line while he was expressing his opinions on the efforts made toward conserving the Kadalundi-Vallikkunnu Community Reserve.
- (ii) U. Kalanathan tried to belittle the efforts made toward conserving the Kadalundi-Vallikkunnu Community Reserve.
- (iii) U. Kalanathan honestly shared his opinion on the efforts made toward conserving the Kadalundi-Vallikkunnu Community Reserve. **(1 Mark)**

- A. Only (i)
- B. Only (ii)
- C. Both (i) and (ii)
- D. Only (iii)
- E. All of (i), (ii) and (iii)

**Answer : D,**

**Solution :**

The correct answer is the option (d). 'Outspoken' means '*Frank in stating one's opinions, especially if they are shocking or controversial*';

'Belittle' means '*Dismiss (someone or something) as unimportant*';

From the above stated meanings of words, we understand that the author intends to say that U.Kalanathan had honestly shared his opinion on the efforts made toward conserving the Kadalundi-Vallikkunnu Community Reserve. So, the alternative (iii) is the correct answer while the other two alternatives i.e., (i) and (ii) are incorrect.

Hence, the correct answer is the option (d).

Q.83 **Essay** : 81-90):Passage:

**Read the following passage divided into number of paragraphs carefully and answer the questions that follow it.**

**Paragraph 1:** Conservation reserves and community reserves in India are terms denoting protected areas of India which typically act as buffer zones to or connectors and migration corridors between established national parks, wildlife sanctuaries and reserved and protected forests of India. The Kadalundi-Vallikkunnu Community Reserve, the Kerala's first community reserve with a unique estuarial ecosystem, is in bad shape *as none cares for it*. The initial interest shown by the government and people in conserving the mangroves and mudflats of Kadalundi when the concept of community reserve was launched in 2017 no longer exists. Nothing visible has been done for the community reserve in the last few years. Moreover, a master plan prepared for the facility has been apparently dumped.

**Paragraph 2:** U. Kalanathan, former president of Vallikkunnu grama panchayat and an *outspoken* exponent of mangrove conservation, said that strong political interests shown by those in the managing committee had virtually killed the community reserve.

**Paragraph 3:** "Nothing is taking place at Kadalundi. It is indeed a sad thing. In fact, a lot could have been done to lift this community reserve to a state where the world would take note of it," said Mr. Kalanathan. At present, a few tour operators are offering sightseeing services in country boats and homestays at Kadalundi. However, the promotion of local tourism in a small way by involving entrepreneurs should not be a mandate for the community reserve managing committee, according to Mr. Kalanathan.

**Paragraph 4:** Unabated dumping of waste in the ecologically fragile estuary continues to be the biggest menace for the community reserve. Some boards warning against dumping of waste at the community reserve have long disappeared.

**Paragraph 5:** Echoing concerns raised by scientists studying the mudflats of Kadalundi and the foraging habits of migratory birds reaching there, Mr. Kalanathan said: "Major changes have taken place in the mangrove and mudflat ecosystems of Kadalundi of late. This does not augur well for both the community reserve and thousands of migratory birds reaching the estuarial mudflats for annual summering." He demanded that the government take solid and visible action not only to conserve the mangroves of Kadalundi but also to give the community reserve a momentum.

Why does according to Mr. Kalanathan involving entrepreneurs to promote local tourism should not be a mandate for the community reserve managing committee, as mentioned in the third paragraph?

(i) Involving entrepreneurs to promote local tourism, according to Mr. Kalanathan, would enhance the instances of dumping of waste in the ecological fragile estuary.

(ii) Involving entrepreneurs to promote local tourism, according to Mr. Kalanathan, would decrease the livelihood means for the local people.



(iii) Involving entrepreneurs to promote local tourism, according to Mr. Kalanathan, would threaten the ecological system of the Kadalundi-Vallikkunnu Community Reserve. **(1 Mark)**

- A. Only (i)
- B. Both (ii) and (iii)
- C. Only (ii)
- D. All of (i), (ii) and (iii)
- E. None of (i), (ii) and (iii) are correct

**Answer : E,**

**Solution :**

The correct answer is the option (e). Kindly note that the answer to the question has to be given from the point of view of Mr. Kalanathan— *why, according to Mr. Kalanathan...* The given passage doesn't inform readers about the reasoning behind the opinion of Mr. Kalanathan about not making involving entrepreneurs to promote local tourism a mandate for the community reserve managing committee.

So, it can't be said with certainty that the reason(s) behind Mr. Kalanathan holding the given opinion are mentioned in either of the alternatives (i), (ii) and (iii).

Hence, the correct answer is the option (e).

Q.84 **Essay : 81-90):**Passage:

**Read the following passage divided into number of paragraphs carefully and answer the questions that follow it.**

**Paragraph 1:** Conservation reserves and community reserves in India are terms denoting protected areas of India which typically act as buffer zones to or connectors and migration corridors between established national parks, wildlife sanctuaries and reserved and protected forests of India. The Kadalundi-Vallikkunnu Community Reserve, the Kerala's first community reserve with a unique estuarial ecosystem, is in bad shape **as none cares for it**. The initial interest shown by the government and people in conserving the mangroves and mudflats of Kadalundi when the concept of community reserve was launched in 2017 no longer exists. Nothing visible has been done for the community reserve in the last few years. Moreover, a master plan prepared for the facility has been apparently dumped.

**Paragraph 2:** U. Kalanathan, former president of Vallikkunnu grama panchayat and an *outspoken* exponent of mangrove conservation, said that strong political interests shown by those in the managing committee had virtually killed the community reserve.



**Paragraph 3:** “Nothing is taking place at Kadalundi. It is indeed a sad thing. In fact, a lot could have been done to lift this community reserve to a state where the world would take note of it,” said Mr. Kalanathan. At present, a few tour operators are offering sightseeing services in country boats and homestays at Kadalundi. However, the promotion of local tourism in a small way by involving entrepreneurs should not be a mandate for the community reserve managing committee, according to Mr. Kalanathan.

**Paragraph 4:** Unabated dumping of waste in the ecologically fragile estuary continues to be the biggest menace for the community reserve. Some boards warning against dumping of waste at the community reserve have long disappeared.

**Paragraph 5:** Echoing concerns raised by scientists studying the mudflats of Kadalundi and the foraging habits of migratory birds reaching there, Mr. Kalanathan said: “Major changes have taken place in the mangrove and mudflat ecosystems of Kadalundi of late. This does not augur well for both the community reserve and thousands of migratory birds reaching the estuarial mudflats for annual summering.” He demanded that the government take solid and visible action not only to conserve the mangroves of Kadalundi but also to give the community reserve a momentum.

Which of the following statements can be inferred as the opinion of the author in respect of the characteristics of the Kadalundi-Vallikkunnu Community Reserve?

(i) The Kadalundi-Vallikkunnu Community Reserve doesn't deserve to be called as a community reserve anymore.

(ii) The government is apathetic about improving the conditions in the Kadalundi-Vallikkunnu.

(iii) The community reserve is akin to a waste landfill. **(1 Mark)**

- A. Both (ii) and (iii)
- B. Only (i)
- C. Both (i) and (iii)
- D. Both (i) and (ii)
- E. All of (i), (ii) and (iii)

**Answer : E,**

**Solution :**

All the three statements can be inferred as the opinions of the author.

The statement (i) can be inferred from the second sentence of the first paragraph ‘***The initial interest shown by the government and people in conserving the***

*mangroves and mudflats of Kadalundi when the concept of community reserve was launched in 2017 no longer exists .* The mentioned sentence was made by the author and she/he opined in the sentence that the interest shown by the government and people in preserving the mangroves and mudflats of Kadalundi no longer exists. If a land of ecological system isn't preserved as per the criteria of community reserve, then it doesn't deserve to be called a community reserve. So, the statement (i) is correct.

The statement (ii) can be inferred from the first two sentences of the first paragraph ' *The Kadalundi-Vallikkunnu Community Reserve, the Kerala's first community reserve with a unique estuarial ecosystem, is in bad shape as none cares for it . The initial interest shown by the government and people in conserving... .. no longer exists.* Again, the mentioned sentences were made by the author and she/he opined that ' *none cares for it*' and ' *the interest in conserving the community reserve no longer exists*'. So, the statement (ii) is also correct.

The statement (iii) can be inferred from the paragraph 4. ' *Unabated dumping of waste in the ecologically fragile estuary continues to be the biggest menace for the community reserve. Some boards warning against dumping of waste... have long disappeared.*' The community reserve is subjected to **unabated dumping of waste** . This is akin to the situation of a waste landfill. So, the statement (iii) is also correct.

Hence, the option (e) is the correct answer.

Q.85 **Essay** : 81-90):Passage:

**Read the following passage divided into number of paragraphs carefully and answer the questions that follow it.**

**Paragraph 1:** Conservation reserves and community reserves in India are terms denoting protected areas of India which typically act as buffer zones to or connectors and migration corridors between established national parks, wildlife sanctuaries and reserved and protected forests of India. The Kadalundi-Vallikkunnu Community Reserve, the Kerala's first community reserve with a unique estuarial ecosystem, is in bad shape **as none cares for it**. The initial interest shown by the government and people in conserving the mangroves and mudflats of Kadalundi when the concept of community reserve was launched in 2017 no longer exists. Nothing visible has been done for the community reserve in the last few years. Moreover, a master plan prepared for the facility has been apparently dumped.

**Paragraph 2:** U. Kalanathan, former president of Vallikkunnu grama panchayat and an *outspoken* exponent of mangrove conservation, said that strong political interests

shown by those in the managing committee had virtually killed the community reserve.

**Paragraph 3:** “Nothing is taking place at Kadalundi. It is indeed a sad thing. In fact, a lot could have been done to lift this community reserve to a state where the world would take note of it,” said Mr. Kalanathan. At present, a few tour operators are offering sightseeing services in country boats and homestays at Kadalundi. However, the promotion of local tourism in a small way by involving entrepreneurs should not be a mandate for the community reserve managing committee, according to Mr. Kalanathan.

**Paragraph 4:** Unabated dumping of waste in the ecologically fragile estuary continues to be the biggest menace for the community reserve. Some boards warning against dumping of waste at the community reserve have long disappeared.

**Paragraph 5:** Echoing concerns raised by scientists studying the mudflats of Kadalundi and the foraging habits of migratory birds reaching there, Mr. Kalanathan said: “Major changes have taken place in the mangrove and mudflat ecosystems of Kadalundi of late. This does not augur well for both the community reserve and thousands of migratory birds reaching the estuarial mudflats for annual summering.” He demanded that the government take solid and visible action not only to conserve the mangroves of Kadalundi but also to give the community reserve a momentum.

Which of the followings can be inferred from the paragraph 5?

- (i) The situation of the ecological system in the Kadalundi-Vallikkunnu Community Reserve is poignant.
  - (ii) The situation of the ecological system in the Kadalundi-Vallikkunnu Community Reserve is propitious.
  - (iii) The situation of the ecological system in the Kadalundi-Vallikkunnu Community Reserve is providential. **(1 Mark)**
- A. Both (i) and (ii)
  - B. Both (ii) and (iii)
  - C. Both (i) and (iii)
  - D. Only (i)
  - E. Only (iii)

**Answer : D,**

**Solution :**

Poignant [adjective] means ‘ *evoking a keen sense of sadness or regret*’;

Propitious [adjective] means ‘ *giving or indicating a good chance of success*’;

*favourable*’;

Providential [adjective] means ‘*occurring at a favourable time; opportune*’; ‘*involving divine foresight or providence*’;

Upon reading the paragraph 5 and sentences like ‘Echoing concerns raised by scientists...’ and the meaning of the above words, it can be inferred that ***the situation of the ecosystem*** of the Kadalundi-Vallikkunnu Community Reserve ***evokes sadness or regret*** .

So, the statement (i) is the correct inference which can be drawn upon reading the fifth paragraph.

Hence, the option (d) is the correct answer.

Q.86 **Essay** : 81-90):Passage:

**Read the following passage divided into number of paragraphs carefully and answer the questions that follow it.**

**Paragraph 1:** Conservation reserves and community reserves in India are terms denoting protected areas of India which typically act as buffer zones to or connectors and migration corridors between established national parks, wildlife sanctuaries and reserved and protected forests of India. The Kadalundi-Vallikkunnu Community Reserve, the Kerala’s first community reserve with a unique estuarial ecosystem, is in bad shape ***as none cares for it***. The initial interest shown by the government and people in conserving the mangroves and mudflats of Kadalundi when the concept of community reserve was launched in 2017 no longer exists. Nothing visible has been done for the community reserve in the last few years. Moreover, a master plan prepared for the facility has been apparently dumped.

**Paragraph 2:** U. Kalanathan, former president of Vallikkunnu grama panchayat and an *outspoken* exponent of mangrove conservation, said that strong political interests shown by those in the managing committee had virtually killed the community reserve.

**Paragraph 3:** “Nothing is taking place at Kadalundi. It is indeed a sad thing. In fact, a lot could have been done to lift this community reserve to a state where the world would take note of it,” said Mr. Kalanathan. At present, a few tour operators are offering sightseeing services in country boats and homestays at Kadalundi. However, the promotion of local tourism in a small way by involving entrepreneurs should not be a mandate for the community reserve managing committee, according to Mr. Kalanathan.

**Paragraph 4:** Unabated dumping of waste in the ecologically fragile estuary continues to be the biggest menace for the community reserve. Some boards warning

against dumping of waste at the community reserve have long disappeared.

**Paragraph 5:** Echoing concerns raised by scientists studying the mudflats of Kadalundi and the foraging habits of migratory birds reaching there, Mr. Kalanathan said: "Major changes have taken place in the mangrove and mudflat ecosystems of Kadalundi of late. This does not augur well for both the community reserve and thousands of migratory birds reaching the estuarial mudflats for annual summering." He demanded that the government take solid and visible action not only to conserve the mangroves of Kadalundi but also to give the community reserve a momentum.

Which of the following is/are true according to the passage?

(i) The pair micro-rovers which were launched to the surface of an asteroid will "jump" just once and can turn on its sides.

(ii) The pair of micro-rovers have a maximum battery life of just 16 hours.

(iii) The name of the pair of mirco-rovers is MINERVA-II. **(1 Mark)**

A. Only (i)

B. Only (ii)

C. Only (iii)

D. Both (i) and (ii)

E. All of (i), (ii) and (iii)

**Answer : C,**

**Solution :**

The answer for the given question can be derived from the third and fourth paragraph.

From the first sentence of the third paragraph, we can understand that the name of the pair of micro-rovers dropped by Hayabusa2 on the Ryugu asteroid is MIVERVA-II. So, the statement (iii) is true.

But upon reading the fourth paragraph we understand the idiosyncrasies mentioned in the statements (i) and (ii) aren't of the pair of micro-rovers but of the MASCOT. So, the statements (i) and (ii) are wrong.

Hence, the correct answer is the option (c).

Q.87 **Essay :** 81-90):Passage:

**Read the following passage divided into number of paragraphs carefully and answer the questions that follow it.**

**Paragraph 1:** Conservation reserves and community reserves in India are terms denoting protected areas of India which typically act as buffer zones to or connectors and migration corridors between established national parks, wildlife sanctuaries and reserved and protected forests of India. The Kadalundi-Vallikkunnu Community Reserve, the Kerala's first community reserve with a unique estuarial ecosystem, is in bad shape **as none cares for it**. The initial interest shown by the government and people in conserving the mangroves and mudflats of Kadalundi when the concept of community reserve was launched in 2017 no longer exists. Nothing visible has been done for the community reserve in the last few years. Moreover, a master plan prepared for the facility has been apparently dumped.

**Paragraph 2:** U. Kalanathan, former president of Vallikkunnu grama panchayat and an *outspoken* exponent of mangrove conservation, said that strong political interests shown by those in the managing committee had virtually killed the community reserve.

**Paragraph 3:** "Nothing is taking place at Kadalundi. It is indeed a sad thing. In fact, a lot could have been done to lift this community reserve to a state where the world would take note of it," said Mr. Kalanathan. At present, a few tour operators are offering sightseeing services in country boats and homestays at Kadalundi. However, the promotion of local tourism in a small way by involving entrepreneurs should not be a mandate for the community reserve managing committee, according to Mr. Kalanathan.

**Paragraph 4:** Unabated dumping of waste in the ecologically fragile estuary continues to be the biggest menace for the community reserve. Some boards warning against dumping of waste at the community reserve have long disappeared.

**Paragraph 5:** Echoing concerns raised by scientists studying the mudflats of Kadalundi and the foraging habits of migratory birds reaching there, Mr. Kalanathan said: "Major changes have taken place in the mangrove and mudflat ecosystems of Kadalundi of late. This does not augur well for both the community reserve and thousands of migratory birds reaching the estuarial mudflats for annual summering." He demanded that the government take solid and visible action not only to conserve the mangroves of Kadalundi but also to give the community reserve a momentum.

What is being referred by the term '**spacecraft**' as highlighted in the first sentence of the second paragraph? **(1 Mark)**

- A. MASCOT
- B. Hayabusa2
- C. MIVERVA-II
- D. IMPACTOR
- E. JAXA

**Answer : B,**

**Solution :**

The answer to the question can be derived from the first two paragraphs. Upon reading the first paragraph, we understand that **The Hayabusa2** is a Japanese probe which launched MASCOT. The first sentence of the second paragraph says that *the MASCOT separated from the spacecraft as planned* . Clearly, **The Hayabusa2** must be the *spacecraft*.

Hence, the option (b) is the correct answer.

Q.88 **Essay** : 81-90):Passage:

**Read the following passage divided into number of paragraphs carefully and answer the questions that follow it.**

**Paragraph 1:** Conservation reserves and community reserves in India are terms denoting protected areas of India which typically act as buffer zones to or connectors and migration corridors between established national parks, wildlife sanctuaries and reserved and protected forests of India. The Kadalundi-Vallikkunnu Community Reserve, the Kerala's first community reserve with a unique estuarial ecosystem, is in bad shape **as none cares for it**. The initial interest shown by the government and people in conserving the mangroves and mudflats of Kadalundi when the concept of community reserve was launched in 2017 no longer exists. Nothing visible has been done for the community reserve in the last few years. Moreover, a master plan prepared for the facility has been apparently dumped.

**Paragraph 2:** U. Kalanathan, former president of Vallikkunnu grama panchayat and an *outspoken* exponent of mangrove conservation, said that strong political interests shown by those in the managing committee had virtually killed the community reserve.

**Paragraph 3:** "Nothing is taking place at Kadalundi. It is indeed a sad thing. In fact, a lot could have been done to lift this community reserve to a state where the world would take note of it," said Mr. Kalanathan. At present, a few tour operators are offering sightseeing services in country boats and homestays at Kadalundi. However, the promotion of local tourism in a small way by involving entrepreneurs should not be a mandate for the community reserve managing committee, according to Mr. Kalanathan.

**Paragraph 4:** Unabated dumping of waste in the ecologically fragile estuary continues to be the biggest menace for the community reserve. Some boards warning against dumping of waste at the community reserve have long disappeared.

**Paragraph 5:** Echoing concerns raised by scientists studying the mudflats of Kadalundi and the foraging habits of migratory birds reaching there, Mr. Kalanathan said: "Major changes have taken place in the mangrove and mudflat ecosystems of



Kadalundi of late. This does not augur well for both the community reserve and thousands of migratory birds reaching the estuarial mudflats for annual summering.” He demanded that the government take solid and visible action not only to conserve the mangroves of Kadalundi but also to give the community reserve a momentum.

What is the relationship between MASCOT and MINERVA-II micro-rovers?

(I) MINERVA-II micro-rovers launched the MASCOT 10 days after the Hayabusa2 dropped the pair of MINERVA-II.

(II) MINERVA-II mirco-rovers and MASCOT, both are scientific machines launched by the Hayabusa2.

(III) MASCOT is a payload of MINERVA-II micro-rovers, having similar mobility on the surface of the asteroid. **(1 Mark)**

- A. Only (I)
- B. Only (II)
- C. Only (III)
- D. Both (I) and (III)
- E. Both (I) and (II)

**Answer : B,**

**Solution :**

The statement (III) is wrong as evident upon reading the first two sentences of the paragraph 4. The MASCOT will be largely immobile while the MINERVA-II micro-rovers will make several jumps on the surface of the asteroid. The statement (I) is also wrong and the sentence (II) is correct as evident from the second sentence of the paragraph 1 and the first sentence of the paragraph 3.

Hence, the option (b) is the correct answer.

Q.89 **Essay** : 81-90):Passage:

**Read the following passage divided into number of paragraphs carefully and answer the questions that follow it.**

**Paragraph 1:** Conservation reserves and community reserves in India are terms denoting protected areas of India which typically act as buffer zones to or connectors and migration corridors between established national parks, wildlife sanctuaries and reserved and protected forests of India. The Kadalundi-Vallikkunnu Community Reserve, the Kerala’s first community reserve with a unique estuarial ecosystem, is in



bad shape **as none cares for it**. The initial interest shown by the government and people in conserving the mangroves and mudflats of Kadalundi when the concept of community reserve was launched in 2017 no longer exists. Nothing visible has been done for the community reserve in the last few years. Moreover, a master plan prepared for the facility has been apparently dumped.

**Paragraph 2:** U. Kalanathan, former president of Vallikkunnu grama panchayat and an *outspoken* exponent of mangrove conservation, said that strong political interests shown by those in the managing committee had virtually killed the community reserve.

**Paragraph 3:** “Nothing is taking place at Kadalundi. It is indeed a sad thing. In fact, a lot could have been done to lift this community reserve to a state where the world would take note of it,” said Mr. Kalanathan. At present, a few tour operators are offering sightseeing services in country boats and homestays at Kadalundi. However, the promotion of local tourism in a small way by involving entrepreneurs should not be a mandate for the community reserve managing committee, according to Mr. Kalanathan.

**Paragraph 4:** Unabated dumping of waste in the ecologically fragile estuary continues to be the biggest menace for the community reserve. Some boards warning against dumping of waste at the community reserve have long disappeared.

**Paragraph 5:** Echoing concerns raised by scientists studying the mudflats of Kadalundi and the foraging habits of migratory birds reaching there, Mr. Kalanathan said: “Major changes have taken place in the mangrove and mudflat ecosystems of Kadalundi of late. This does not augur well for both the community reserve and thousands of migratory birds reaching the estuarial mudflats for annual summering.” He demanded that the government take solid and visible action not only to conserve the mangroves of Kadalundi but also to give the community reserve a momentum.

“I will spend many days on the asteroid. I am and will take the advantage of Ryugu’s low gravity to move around its surface, but am I box-shaped is can’t said with certainty”. Who am I? Answer the question based on the information given in the passage? **(1 Mark)**

- A. MASCOT
- B. MINERVA-II
- C. Hayabusa2
- D. JAXA
- E. None of the above

**Answer : B,**

**Solution :**

The answer to the question can be found from reading the second and fourth paragraphs. Kindly, read the last sentence of the second paragraph '**The 10-kg box-shaped MASCOT is loaded with sensors. It can take images at multiple wavelengths, investigate minerals with a microscope, gauge surface temperature and measure magnetic fields.**' MASCOT is box-shaped. So, for MASCOT, we can say with certainty that it is a box-shaped. The shapes of other scientific machines aren't discussed in the given passage. So, the option (a) is ruled-out.

Now, kindly read the fourth paragraph. Upon reading it, we get to understand that both MASCOT and MINERVA-II intends to take advantage of Ryugu's low gravity to move (or jump) around on its surface. The maximum battery life for the MASCOT is 16 hours (less than one day) while the MINERVA-II will spend several months or many days on the asteroid. The Hayabusa2 is the spacecraft which launched MASCOT and MINERVA-II. JAXA is the abbreviation for the name of the Japanese Space Organisation.

From above, we understand that the correct answer to the question is the option (b).

Q.90 **Essay** : 81-90):Passage:

**Read the following passage divided into number of paragraphs carefully and answer the questions that follow it.**

**Paragraph 1:** Conservation reserves and community reserves in India are terms denoting protected areas of India which typically act as buffer zones to or connectors and migration corridors between established national parks, wildlife sanctuaries and reserved and protected forests of India. The Kadalundi-Vallikkunnu Community Reserve, the Kerala's first community reserve with a unique estuarial ecosystem, is in bad shape **as none cares for it**. The initial interest shown by the government and people in conserving the mangroves and mudflats of Kadalundi when the concept of community reserve was launched in 2017 no longer exists. Nothing visible has been done for the community reserve in the last few years. Moreover, a master plan prepared for the facility has been apparently dumped.

**Paragraph 2:** U. Kalanathan, former president of Vallikkunnu grama panchayat and an *outspoken* exponent of mangrove conservation, said that strong political interests shown by those in the managing committee had virtually killed the community reserve.

**Paragraph 3:** "Nothing is taking place at Kadalundi. It is indeed a sad thing. In fact, a lot could have been done to lift this community reserve to a state where the world would take note of it," said Mr. Kalanathan. At present, a few tour operators are offering sightseeing services in country boats and homestays at Kadalundi. However, the promotion of local tourism in a small way by involving entrepreneurs should not be a mandate for the community reserve managing committee, according to Mr.

Kalanathan.

**Paragraph 4:** Unabated dumping of waste in the ecologically fragile estuary continues to be the biggest menace for the community reserve. Some boards warning against dumping of waste at the community reserve have long disappeared.

**Paragraph 5:** Echoing concerns raised by scientists studying the mudflats of Kadalundi and the foraging habits of migratory birds reaching there, Mr. Kalanathan said: "Major changes have taken place in the mangrove and mudflat ecosystems of Kadalundi of late. This does not augur well for both the community reserve and thousands of migratory birds reaching the estuarial mudflats for annual summering." He demanded that the government take solid and visible action not only to conserve the mangroves of Kadalundi but also to give the community reserve a momentum.

Which is of the following(s) can't be considered as True based on the given information of the passage?

- (I) Hayabusa2 probe was created by the Japanese.
  - (II) MINERVA-II micro-rovers were created by the Japanese.
  - (III) MASCOT was created by the French and German.
  - (IV) Impactor was created by the Japanese. **(1 Mark)**
- A. Only (II)
  - B. Only (III)
  - C. Only (I), (II) and (III)
  - D. All of (I), (II), (III) and (IV)
  - E. Both (II) and (IV)

**Answer : E,**

**Solution :**

Based on the information given in the paragraph, we can't say with certainty if MINERVA-II micro-rovers and the "impactor" were created by the Japanese. So, the statements (II) and (IV) are incorrect.

But, upon reading the paragraph 1, we can say that the word "Japanese probe" mentioned in the first sentence is referring to the "Hayabusa2 probe" which is mentioned in the second sentence, and the MASCOT is a French-German scientific machine. So, both the statements (I) and (III) are correct.

Hence, the correct answer is the option (e).

Q.91 **Essay** : 91-91):Passage:

**There are sets of four statements in question given below which when connected using the correct sentence structure forms a complete single sentence without altering the meaning of the sentences given in the question. There are four options given below the question, choose the sentence that forms the correct formation of single sentence which is both grammatically correct and contextually meaningful. If none follows, choose (E) as your answer.**

Was not seen again; Mr Khashoggi walked into the Saudi consulate; In Istanbul earlier this month and; A critical journalist in self-imposed exile. **(1.5 Mark)**

- A. Mr Khashoggi walked into the Saudi consulate, was not seen again in Istanbul earlier this month and a critical journalist in self-imposed exile.
- B. In Istanbul earlier this month and a critical journalist in self-imposed exile, Mr Khashoggi walked into the Saudi consulate and was not seen again.
- C. A critical journalist in self-imposed exile, Mr Khashoggi walked into the Saudi consulate in Istanbul earlier this month and was not seen again.
- D. A critical journalist in self-imposed exile was not seen again in Istanbul earlier this month and Mr Khashoggi walked into the Saudi consulate.
- E. None of the above is correct.

**Answer : C,**

**Solution :**

Among the given options, all sentences, except (c) are either contextually different or grammatically incorrect. Only sentence (c) forms the correct sentence which follows the sentences given in the question both grammatically and contextually.

Hence, the option (c) is the correct answer.

*A critical journalist in self-imposed exile, Mr Khashoggi walked into the Saudi consulate in Istanbul earlier this month and was not seen again.*

Q.92 **Essay** : 92-92):Passage:

**The following question consists of a sentence which is divided into three parts which contain grammatical errors in one or more than one part of the sentence. If there is an error in any part of the sentence, find the correct alternatives to replace those parts from the three options given below each**

**question to make the sentence grammatically correct. If all the parts of the sentence are incorrect and none of the alternatives are correct to replace them, then choose (D) i.e. none of the (I), (II) and (III) as your answer. If the given sentence is grammatically correct or does not require any correction, choose (E) i.e. No correction required as your answer.**

He, you and I have done (I)/ our best to get recruited (II)/ in the best data analytics company of Bengaluru (III).

(I) You, He and I have done

(II) my best to get recruited

(III) in the best data analytics company of a Bengaluru. **(1.5 Mark)**

A. Only (I)

B. Both (I) and (II)

C. Only (III)

D. None of the (I), (II) and (III)

E. No correction required

**Answer : A,**

**Solution :**

When more than one Person is used in a sentence, the order of the Personal Pronouns for the case when all Personal Pronouns are singular: First place - 2nd Person, second place - 3rd Person and third place - 1st Person (Pronoun Rule 231).

So, there is an error in the part (I). The correct part (I) should be 'He, you and I have done'.

There is no error in the parts (II) and (III).

Hence, the correct answer is the option (a).

Q.93 **Essay** : 93-93):Passage:

**In the following question a part of the sentence is given in bold, it is then followed by three sentences which try to explain the meaning of the phrase given in bold. Choose the best set of alternatives from the five options given below each question which explains the meaning of the phrase correctly without altering the meaning of the sentence given as question.**

The struggle to maintain an independent Ukrainian Orthodox church continued after 1654, when Ukraine was **politically yoked** to Moscow.

(I) The struggle to maintain an independent Ukrainian Orthodox church after 1654, when Ukraine was politically maverick to Moscow.

(II) To maintain an independent Ukrainian Orthodox church when Ukraine was politically joined with Moscow in a close relationship, a struggle continued after 1654.

(III) The struggle to maintain an independent Ukrainian Orthodox church continued after 1654, when Ukraine was politically independent of the Moscow.

**(1 Mark)**

- A. Only (i)
- B. Both (i) and (ii)
- C. Only (ii)
- D. Both (ii) and (iii)
- E. None of the above

**Answer : C,**

**Solution :**

Yoke [verb] means 'Cause (two people or things) to be joined in a close relationship';

Maverick [verb] means 'An unorthodox or independent-minded person';

Politically yoked means 'one state/nation is *politically joined* with another state/nation in a close relationship'.

From above, we find that the statements (I) and (III) are **incorrect**.

Only statement (II) implies the correct meaning and hence, the option (c) is the correct answer.

Q.94 **Essay** : 94-94):Passage:

**In question given below there are two statements, each statement consists of two blanks. You have to choose the option which provides the correct set of words that fits both the blanks in both the statements appropriately and in the same order making them meaningful and grammatically correct.**

(1) The \_\_\_\_\_ Elric brothers try to bring their dead mother back to life,

using forbidden \_\_\_\_\_ and pay a tormenting physical and mental price.  
(2) The exhibition is not visually \_\_\_\_\_, but the combination of words and artworks creates an \_\_\_\_\_ of ideas that is greater than the sum of its imaginative parts. **(1 Mark)**

- A. bestial, aptitude
- B. cohesive, alchemy
- C. tactile, clemency
- D. wretched, dissident
- E. aghast, anarchy

**Answer : B,**

**Solution :**

Aghast [adjective] means '*filled with horror or shock*';

Anarchy [noun] means '*a state of disorder due to absence or non-recognition of authority or other controlling systems*';

Bestial [adjective] means '*of or like an animal or animals; savagely cruel and depraved*';

Tactile [adjective] means '*of or connected with the sense of touch*'; '*perceptible by touch or apparently so; tangible*';

Clemency [noun] means '*mercy; lenience*';

Wretched [adjective] means '*(of a person) in a very unhappy or unfortunate state*'; '*of poor quality; very bad*';

Dissident [noun] means '*a person who opposes official policy, especially that of an authoritarian state*';

Cohesive [adjective] means '*characterized by cohesion*.'

Cohesion [noun] means '*the action or fact of forming a united whole*';

Alchemy [noun] means '*a seemingly magical process of transformation, creation, or combination*'.

Upon reading the meaning of above words, one understands that the words mentioned in the option (b), upon filling the blanks, correctly form grammatically correct and

contextually meaningful sentences which are given in the question.

Hence, the option (b) is the correct answer.

Q.95 **Essay** : 95-95):Passage:

**In each of the given questions an inference is given in bold which is then followed by three paragraphs. You have to find the paragraph(s) from where it is inferred. Choose the option with the best possible outcome as your choice.**

**Rebel faction threatens to set up its own organisational structure.**

(I) The development comes a day after the warring factions held talks here to iron out differences ahead of the 2019 Lok Sabha elections. The members of the two groups had described the meeting as “positive” and “fruitful”.

(II) Following a meeting of its core committee on Tuesday, the AAP announced appointments of three district and eight constituency presidents, besides giving the charge of its Punjab kisan and transport cells to two MLAs.

(III) The Aam Aadmi Party’s rebel faction in Punjab on Wednesday criticised the announcement of new office-bearers by the party and threatened to set up its own organisational structure if the appointments are not scrapped by November 1.

**1. (1.5 Mark)**

- A. Both (II) and (III)
- B. Only (III)
- C. Both (I) and (II)
- D. All of (I), (II) and (III)
- E. Both (I) and (III)

**Answer : B,**

**Solution :**

The paragraph (I) doesn’t talk about if rebel faction had threatened to set up its own organizational structure. So, the paragraph (I) is out-of-context and is the correct answer.

The paragraph (III) mentions information about the rebel faction criticizing the announcement of new office-bearers by the AAP and threatened to set up its own organizational structure if the appointments are not scrapped by November 1. The given inference can be derived from the paragraph (III).



The paragraph (I) informs us about a meeting between the warring factions and the opinion of the factions about the meeting held between them. The paragraph (I) doesn't mention about a rebel-faction threatened to set up its own organizational structure.

So, the paragraph (II) is also out-of-context.

So, from above, we can see that the given inference can only be derived from the paragraph (III). Hence, the option (b) is the correct answer.

Q.96 **Essay** : 96-96):Passage:

**There are sets of four statements in question given below which when connected using the correct sentence structure forms a complete single sentence without altering the meaning of the sentences given in the question. There are four options given below the question, choose the sentence that forms the correct formation of single sentence which is both grammatically correct and contextually meaningful. If none follows, choose (E) as your answer.**

Destined to grow even vaster; Fiscal hawks decry huge public debts,; Bigger bills for health care and pensions; As ageing populations rack up ever; **(1 Mark)**

- A. Bigger bills for health care and pensions, destined to grow even vaster as ageing populations rake up ever and fiscal hawks decry huge public debts.
- B. Fiscal hawks decry huge public debts, destined to grow even vaster as ageing populations rack up ever bigger bills for health care and pensions.
- C. As ageing populations rack up ever destined to grow even vaster, Fiscal hawks decry huge public debts bigger bills for health care and pensions.
- D. Despite destined to grow even vaster as ageing populations rack up ever bigger bills for health care and pensions fiscal hawks decry huge public debts.
- E. None of the above are correct.

**Answer : B,**

**Solution :**

Sol. All other options except (b) are either grammatically incorrect or contextually meaningless. Hence (b) is the correct option which is both grammatically correct and contextually similar to the given question.

Q.97 **Essay** : 97-97):Passage:

**The following question consists of a sentence which is divided into three parts which contain grammatical errors in one or more than one part of the sentence. If there is an error in any part of the sentence, find the correct alternatives to replace those parts from the three options given below each question to make the sentence grammatically correct. If all the parts of the sentence are incorrect and none of the alternatives are correct to replace them, then choose (D) i.e. none of the (I), (II) and (III) as your answer. If the given sentence is grammatically correct or does not require any correction, choose (E) i.e. No correction required as your answer.**

While there is no magic bullet (I)/ such as odd-even, there are feasible measures (II)/ who would make a huge difference in a few years. (III)

(I) Along with there is no magic bullet

(II) such as odd-even, there is feasible measures

(III) which would make a huge difference in a few years **(1 Mark)**

- A. Only (III)
- B. Both (I) and (III)
- C. All (I), (II) and (III)
- D. None of the (I), (II) and (III)
- E. No correction required

**Answer : A,**

**Solution :**

Except for the part (III) of the given sentence, all the other parts of the sentence are grammatically correct and contextually meaningful. Therefore, the part (III) must be replaced by the alternative (III) as the main difference between who and that or which is that you should only use who to refer to a person or people - who is never used to refer to things. Here to refer "feasible measures" "which" should have been used to frame the grammatically correct sentence. Hence, the option (a) is the most suitable answer choice.

Q.98 **Essay** : 98-98):Passage:

**In the following question a part of the sentence is given in bold, it is then followed by three sentences which try to explain the meaning of the phrase**

**given in bold. Choose the best set of alternatives from the five options given below each question which explains the meaning of the phrase correctly without altering the meaning of the sentence given as question.**

**The drubbing meted out** by the voters of Bavaria to Germany's Christian Social Union (csu) on October 14th turns out to have been only the second-nastiest beating administered that day.

(I) The serious defeat given as a punishment by the voters of Bavaria to Germany's Christian Social Union (csu) on October 14th turns out to have been only the second-nastiest beating administered that day.

(II) The unexpected success given by the voters of Bavaria to Germany's Christian Social Union (csu) on October 14th resulted in the second-nastiest defeat for the opponent of the csu.

(III) The ecstatic joy given by the voters of Bavaria to Germany's Christian Social Union (csu) on October 14th was the second-best joy for the csu. **(1.5**

**Mark)**

- A. Only (I)
- B. Only (II)
- C. Only (III)
- D. All of (I), (II) and (III)
- E. Both (I) and (III)

**Answer : A,**

**Solution :**

**Drub** means ' a beating or thrashing';

**Mete sth out** means ' to give or order a punishment or make someone receive cruel or unfair treatment:'

**Nasty** [adjective] means ' very bad or unpleasant';

From the meanings given above, we understand that the voters of Bavaria have given a thrashing as a punishment to the csu.

Among the given statements, the statement (I) correctly provides the meaning to the highlighted phrase.

Hence, the option (a) is the correct answer.

Q.99 **Essay** : 99-99):Passage:

**In question given below there are two statements, each statement consists of two blanks. You have to choose the option which provides the correct set of words that fits both the blanks in both the statements appropriately and in the same order making them meaningful and grammatically correct.**

(1) Jamiu Abiola, \_\_\_\_\_ of Former army general of Nigeria, who was about 17 when his father and mother were deceived, \_\_\_\_\_, and murdered, is courageous to have returned from United States to live in Nigeria.

(2) Many hire trusted \_\_\_\_\_ or kin rather than a better-qualified stranger, to limit the risk of being \_\_\_\_\_ or sued by employees. **(1**

**Mark)**

- A. kith, robbed
- B. offal, sweltered
- C. mettle, depleted
- D. ennui, lauded
- E. denizen, ossified

**Answer : A,**

**Solution :**

Denizen [noun] means ' a person, animal, or plant that lives or is found in a particular place';

Ossify [verb] means ' cease developing; stagnate';

Offal [noun] means ' the entrails and internal organs of an animal used as food';

Swelter [verb] means ' be uncomfortably hot';

Mettle [noun] means ' a person's ability to cope well with difficulties; spirit and resilience';

Deplete [verb] means ' use up the supply or resources of';

Ennui [noun] means ' a feeling of listlessness and dissatisfaction arising from a lack of occupation or excitement';

kith [noun] means 'one's relations';

Rob [verb] means ' *take property unlawfully from (a person or place) by force or threat of force* ';

Upon reading the meaning of above words, one understands that the words mentioned in the option (a), upon filling the blanks, correctly form grammatically correct and contextually meaningful sentences which are given in the question.

Hence, the option (a) is the correct answer.

Q.100 **Essay** : 100-100):Passage:

**In each of the given questions an inference is given in bold which is then followed by three statements. You have to find the statement(s) from where it is inferred. Choose the option with the best possible outcome as your choice.**

**Modi steps in as CBI begins to probe its own leadership.**

(i) According to top officials, the CBI Director briefed Mr. Doval, the NSA, about the case. "He briefed the Prime Minister with all the details regarding the case and subsequently, the Prime Minister asked him to meet and brief the NSA also since the name of a senior officer of R&AW is also mentioned in the FIR," a top official told The Hindu.

(ii) As the Central Bureau of Investigation's second-in-command Rakesh Asthana was embroiled in a bribery case, Prime Minister Narendra Modi and National Security Adviser Ajit Doval swung into damage control, asking CBI Director Alok Verma to ensure the government's image was not tarnished.

(iii) Asked whether the Prime Minister or the NSA said anything during the meeting, the official said: "Both are concerned about the government's image getting tarnished in the matter. The NSA asked the Director to lie low and ensure that the government's image is not damaged in the process." **(1.5 Mark)**

- A. Only (i)
- B. Both (ii) and (iii)
- C. All of (i), (ii) and (iii)
- D. Only (ii)
- E. None of the above

**Answer : D,**

**Solution :**

Among the given three statements, the statements (i) informs us about the briefing the

NSA and the PM about a case, not elucidated in the passage, by the CBI director. The information imparted in (i) informs that the initiative is taken by the CBI director, not by the PM. So, the statement (i) is out-of-context as per the given inference.

The statement (iii) informs reader about a statement made by an official about what the PM Or the NSA said anything during the meeting. The statement (iii) too is out-of-context and the given inference can't be derived from the statement (iii).

The statement (ii) informs us about a bribery case where a senior official of the CBI is accused, and the actions or initiatives taken by the PM and the NSA to damage control and asking the CBI director to investigate the case in a way which wouldn't damage the government's image.

Only from statement (ii), the given inference can be drawn out.

Hence, the option (d) is the correct answer.

Q.101 **Essay** : 101-101):Passage:

**There are sets of four statements in question given below which when connected using the correct sentence structure forms a complete single sentence without altering the meaning of the sentences given in the question. There are four options given below the question, choose the sentence that forms the correct formation of single sentence which is both grammatically correct and contextually meaningful. If none follows, choose (E) as your answer.**

Announced that the death penalty would be abolished; On October 10th Liew Vui Keong; Although the necessary legislation has yet to be introduced in parliament; A minister. **(1.5 Mark)**

- A. Although the necessary legislation has yet to be introduced in parliament a minister announced that the death penalty would be abolished on October 10th Liew Vui Keong.
- B. A minister although the necessary legislation has yet to be introduced in parliament, on October 10th Liew Vui Keong announced that the death penalty would be abolished
- C. A minister announced that the death penalty would be abolished on October 10th Liew Vui Keong, although the necessary legislation has yet to be introduced in parliament.
- D. On October 10th Liew Vui Keong, a minister, announced that the death penalty would be abolished although the necessary legislation has yet to be introduced in

parliament.

E. None of the above

**Answer : D,**

**Solution :**

Among the given options, only (d) forms the correct sentence which is correct and meaningful both in terms of grammar and context. Other options are either grammatically incorrect or contextually meaningless. Hence (d) is the correct choice.

*' On October 10th Liew Vui Keong, a minister, announced that the death penalty would be abolished, although the necessary legislation has yet to be introduced in parliament.'*

Q.102 **Essay : 102-102):** Passage:

**The following question consists of a sentence which is divided into three parts which contain grammatical errors in one or more than one part of the sentence. If there is an error in any part of the sentence, find the correct alternatives to replace those parts from the three options given below each question to make the sentence grammatically correct. If all the parts of the sentence are incorrect and none of the alternatives are correct to replace them, then choose (D) i.e. none of the (I), (II) and (III) as your answer. If the given sentence is grammatically correct or does not require any correction, choose (E) i.e. No correction required as your answer.**

Verma were ousted as director of the premier investigation agency (I)/ in the early hours of Wednesday, a move he has described as "patently illegal" (II)/ in a petition before the Supreme Court (III).

(I) Verma was ousted as director of the premier investigation agency

(II) in a early hours of Wednesday, a move he has described as "patently illegal"

(III) in a petition above the Supreme Court **(1.5 Mark)**

A. Only (I)

B. Only (II)

C. Only (III)

D. None of (I), (II) and (III)

E. No correction required

**Answer : A,**

**Solution :**

The part (I) has an error. The usage of the helping verb 'were' is incorrect and should be replaced with 'was'. The alternative (I) supplies the correct alternative. The other parts (II) and (III) are correct.

Hence, the option (a) is the correct answer.

Q.103 **Essay** : 103-103):Passage:

**In question given below there are two statements, each statement consists of two blanks. You have to choose the option which provides the correct set of words that fits both the blanks in both the statements appropriately and in the same order making them meaningful and grammatically correct.**

(1) By \_\_\_\_\_ heavy fuel oil, just 15 of the biggest ships emit more of the \_\_\_\_\_ oxides of nitrogen and sulphur than all the world's cars put together.

(2) It's hard to tell, a woman says, whether the record-breaking wildfires \_\_\_\_\_ to the north and south of her is causing the \_\_\_\_\_ smoke or the usual controlled burns in the farmers' fields surrounding her home. **(1 Mark)**

- A. exuding, paltry
- B. buttressing, sumptuous
- C. misconstruing, facile
- D. manifesting, pristine
- E. blazing, noxious

**Answer : E,**

**Solution :**

Exude [verb] means '*(with reference to moisture or a smell) discharge or be discharged slowly and steadily*';

Paltry [adjective] means '*(of an amount) very small or meagre*';

Buttress [verb] means '*increase the strength of or justification for; reinforce*';

Sumptuous [adjective] means '*splendid and expensive-looking*';

Misconstrue [verb] means '*interpret (a person's words or actions) wrongly*';



Facile [adjective] means ‘ *ignoring the true complexities of an issue; superficial; (of a person) having a superficial or simplistic knowledge or approach*’;

Blaze [verb] means ‘ *a very large or fiercely burning fire*’;

Noxious [adjective] means ‘ *harmful, poisonous, or very unpleasant*’;

Upon reading the meaning of above words, one understands that the words mentioned in the option (e), upon filling the blanks, correctly form grammatically correct and contextually meaningful sentences which are given in the question.

Hence, the option (e) is the correct answer.

Q.104 **Essay** : 104-104):Passage:

**In this question a small paragraph is given followed by three possible inferences which may or may not be correct. The question is then followed by five options. You have to choose the option which gives the best possible outcome.**

**Australia is perhaps the most successful rich economy**

(I) Rising incomes, low public debt, an affordable welfare state, popular support for mass immigration and a broad consensus on the policies underpinning these things—that is a distant dream in most rich countries. Many Western politicians could scarcely imagine a place that combined them all. Happily, they do not have to, because such a country already exists: Australia

(II) What is the biggest problem facing America? Or Japan? Or Britain? Or France? Opinions vary, naturally, but some worries crop up again and again. Those of a materialist bent point to decades of slow growth in median incomes, which has bred disillusion and anger among working people. Fiscal hawks decry huge public debts, destined to grow even vaster as ageing populations rack up ever bigger bills for health care and pensions. Then there is immigration, which has prompted a furious populist backlash in the United States and all over Europe. That hints at what, for many, is the most alarming trend of all: the lack of any semblance of a political consensus about how to handle these swelling crises.

(III) Australia is far away from everywhere, or has only 25m inhabitants, or is seen mainly as a habitat for cuddly marsupials, it attracts relatively little attention. But its economy is arguably the most successful in the rich world. It has been growing for 27 years without a recession—a record for a developed country. Its cumulative growth over that period is almost three times what Germany has managed. The median

income has risen four times faster than in America. Public debt, at 41% of gdp, is less than half Britain's. **(1.5 Mark)**

- A. Only (I)
- B. Only (II)
- C. Only (III)
- D. Both (I) and (III)
- E. All of (I), (II) and (III)

**Answer : D,**

**Solution :**

The paragraph (I) informs us that Australia is a country which witnesses rising income, low public debt, an affordable welfare state, popular support for mass immigration and a broad consensus on the policies underpinning these things. These are the traits of a successful rich economy. So, the given statement can be inferred from the paragraph (I).

The paragraph (III), in its third sentence, mentions that the economy of Australia is arguably the most successful in the rich world. So, the given statement can also be inferred from the paragraph (III).

The paragraph (II) mentions about the problems being faced by the rich economies but doesn't mention Australia nor suggest if it's economy is successful among the rich economies. So, the given statement can't be derived from the paragraph (II).

Hence, the correct answer is the option (d).

Q.105 **Essay** : 105-105):Passage:

**In question given below there are two statements, each statement consists of two blanks. You have to choose the option which provides the correct set of words that fits both the blanks in both the statements appropriately and in the same order making them meaningful and grammatically correct.**

(1) The president's vanishingly rare appearance on a nonpartisan news program had resulted in a spectacle in which a man eager to speak \_\_\_\_\_ randomly \_\_\_\_\_ questions.

(2) Mr. Helmut Kohl, who recently passed away, \_\_\_\_\_ his way through \_\_\_\_\_ scandals. **(1 Mark)**

- A. coveted, copious
- B. digressed, transient
- C. bulldozed, assorted
- D. yelped, brackish
- E. amalgamated, glutinous

**Answer : C,**

**Solution :**

Covet [verb] means '*yearn to possess (something, especially something belonging to another)*';

Copious [adjective] means '*abundant in supply or quantity*';

Digress [verb] means '*leave the main subject temporarily in speech or writing*';

Transient [adjective] means '*lasting only for a short time; impermanent*';

Bulldoze [verb] means '*clear (ground) or destroy (buildings, trees, etc.) with a bulldozer*'; '*use force insensitively when dealing with (someone or something)*';

Assorted [adjective] means '*of various sorts put together; miscellaneous*';

Yelp [verb] means '*a short, sharp cry, especially of pain, or alarm*';

Brackish [adjective] means '*(of water) slightly salty, as in river estuaries*';

Amalgamate [verb] means '*combine or unite to form one organization or structure*';

Glutinous [adjective] means '*like glue in texture; sticky*';

Upon reading the meaning of above words, one understands that the words mentioned in the option (c), upon filling the blanks, correctly form grammatically correct and contextually meaningful sentences which are given in the question.

Hence, the option (c) is the correct answer.

Q.106 **Essay** : 106-106):Passage:

**There are sets of four statements in question given below which when connected using the correct sentence structure forms a complete single sentence without altering the meaning of the sentences given in the question.**

**There are four options given below the question, choose the sentence that forms the correct formation of single sentence which is both grammatically correct and contextually meaningful. If none follows, choose (E) as your answer.**

Since 1956, of the “corrupt” Congress and to restore Telugu self-respect and pride; When Mr. Naidu’s father-in-law and former Andhra Pradesh Chief Minister N.T. Rama Rao (NTR); His two-point agenda was to break in the State the uninterrupted one-party rule; Founded the party in 1982. **(1.5 Mark)**

- A. When Mr. Naidu’s father-in-law and former Andhra Pradesh Chief Minister N.T. Rama Rao (NTR) founded the party in 1982, since 1956, of the “corrupt” Congress and to restore Telugu self-respect and pride, his two-point agenda was to break in the State the uninterrupted one-party rule.
- B. When Mr. Naidu’s father-in-law and former Andhra Pradesh Chief Minister N.T. Rama Rao (NTR) founded the party in 1982, his two-point agenda was to break in the State the uninterrupted one-party rule since 1956, of the “corrupt” Congress and to restore Telugu self-respect and pride.
- C. His two-point agenda was to break in the State the uninterrupted one-party rule when Mr. Naidu’s father-in-law and former Andhra Pradesh Chief Minister N.T. Rama Rao (NTR) founded the party in 1982 since 1956, of the “corrupt” Congress and to restore Telugu self-respect and pride.
- D. Founded the party in 1982 when Mr. Naidu’s father-in-law and former Andhra Pradesh Chief Minister N.T. Rama Rao (NTR) since 1956, of the “corrupt” Congress and to restore Telugu self-respect and pride, his two-point agenda was to break in the State the uninterrupted one-party rule.
- E. None of the above are correct.

**Answer : B,**

**Solution :**

Among the given options, only (b) forms the correct sentence which is correct and meaningful both in terms of grammar and context. Other options are either grammatically incorrect or contextually meaningless. Hence (b) is the correct choice.

*When Mr. Naidu’s father-in-law and former Andhra Pradesh Chief Minister N.T. Rama Rao (NTR) founded the party in 1982, his two-point agenda was to break in the State the uninterrupted one-party rule, since 1956, of the “corrupt” Congress and to restore Telugu self-respect and pride.*

Q.107 **Essay** : 107-107):Passage:

**The following question consists of a sentence which is divided into three parts which contain grammatical errors in one or more than one part of the sentence. If there is an error in any part of the sentence, find the correct alternatives to replace those parts from the three options given below each question to make the sentence grammatically correct. If all the parts of the sentence are incorrect and none of the alternatives are correct to replace them, then choose (D) i.e. none of the (I), (II) and (III) as your answer. If the given sentence is grammatically correct or does not require any correction, choose (E) i.e. No correction required as your answer.**

There are several problems with the arguments being made (I)/ for a separate payments regulator, apart from the obvious fact that non-banks are participating (II)/ in the payments system without a problem even today. (III)

(I) There are several problems with the arguments been made

(II) of a separate payments regulator, apart from the obvious fact that non-banks is participating

(III) in the payments system without the problem even today **(1 Mark)**

A. Both (II) and (III)

B. Both (I) and (III)

C. Both (I) and (II)

D. None of the (I), (II) and (III)

E. No correction required

**Answer : E,**

**Solution :**

All the parts of the given sentences are grammatically correct and contextually meaningful. Since they do not require any corrections, option (e) becomes the most viable answer choice.

Q.108 **Essay** : 108-108):Passage:

**In each of the given questions an inference is given in bold which is then followed by three statements. You have to find the statement(s) from where it is inferred. Choose the option with the best possible outcome as your choice.**

**Guntur Collector's campaign for enrolling students as voters pays off**

(I) The twin adventurous rides were part of a novel initiative launched by Guntur Collector Kona Sasidhar to encourage young men and women to enroll themselves as voters as part of Systematic Voters' Education and Electoral Participation (SVEEP), an initiative of the Election Commission of India. Students selected through a draw of lots were given a chance to fly or glide in the sky.

(II) The district administration's initiative of offering flying in a hot air balloon to students who would enroll themselves as voters paid off as over 50,000 students enrolled themselves on a single day on Monday, setting off a national record. Preparations began in right earnest as Mr. Sasidhar, Guntur Collector, deputed special officers to all 518 colleges in the district. The enrolment of voters would continue till December 31, 2018, and more campaigns have been planned to enrol students as voters.

(III) On Tuesday, there was excitement in the skies and on the ground below, as the young boys and girls experienced the thrill of flying in a hot air balloon and some of the adventurous, glided in a para-router accompanied by qualified trainers. **(1.5**

**Mark)**

- A. Both (I) and (II)
- B. Only (II)
- C. Only (I)
- D. Both (II) and (III)
- E. Only (III)

**Answer : B,**

**Solution :**

The statement (I) informs about who were responsible for organizing the initiative and also little bit about the initiative. The statement (III) also talks about the excitement of young boys and girls toward experiencing the thrill of flying in a hot air balloon. But the statement (III) doesn't mention if the flying in a hot air balloon is a part of the initiative taken by the Guntur Collector.

So, the given inference can't be drawn from either the statement (I) or (III).

The statement (II) informs reader about Guntur Collector taking an initiative, what the initiative was and about the result of the initiative.

So, a given inference can be drawn from the statement (II).

Hence, the correct answer is the option (b).

Q.109 Essay : 109-109):Passage:

**In question given below there are two statements, each statement consists of two blanks. You have to choose the option which provides the correct set of words that fits both the blanks in both the statements appropriately and in the same order making them meaningful and grammatically correct.**

(1) Although the primary attraction of the Oktoberfest is indeed the beer served in “MaB,” glasses that hold 34 fluid ounces (1 liter), there are also \_\_\_\_\_ food trucks and amusement rides for \_\_\_\_\_ entertainment.

(2) The party atmosphere at the company’s sales event—with \_\_\_\_\_ food and wine laid on for customers and journalists alike—has given way this year to a more \_\_\_\_\_ mood. **(1 Mark)**

- A. antithetical, nominal
- B. macular, ironclad
- C. insular, atavistic
- D. copious, sober
- E. fatuous, fractious

**Answer : D,**

**Solution :**

Antithetical [adjective] means ‘ *directly opposed or contrasted; mutually incompatible*’;

Nominal [adjective] means ‘ *(of a role or status) existing in name only*’; ‘ *relating to or consisting of names*’; ‘ *(of a price or charge) very small; far below the real value or cost*’;

Macular [adjective] means ‘ *relating to the macula of the eye*’;

Ironclad [adjective] means ‘ *covered or protected with iron*’;

Insular [adjective] means ‘ *ignorant of or uninterested in cultures, ideas, or peoples outside one’s own experience*’; ‘ *lacking contact with other people*’;

Atavistic [adjective] means ‘ *relating to or characterized by reversion to something ancient or ancestral*’;

Fatuous [adjective] means ‘ *silly and pointless*’;

Fractious [adjective] means ‘ (typically of children) irritable and quarrelsome’; ‘ (of a group or organization) difficult to control; unruly’;

Copious [adjective] means ‘ abundant in supply or quantity’;

Sober [adjective] means ‘ not affected by alcohol; not drunk’; ‘ serious, sensible, and solemn’;

Upon reading the meaning of above words, one understands that the words mentioned in the option (d), upon filling the blanks, correctly form grammatically correct and contextually meaningful sentences which are given in the question.

Hence, the option (d) is the correct answer.

Q.110 Essay : 110-110):Passage:

**In each of the given questions an inference is given in bold which is then followed by three statements. You have to find the statement(s) from where it is inferred. Choose the option with the best possible outcome as your choice. Silencing of academics from criticising the government denies us a vital safeguard against despotism.**

(I) The university in India is morphing under external pressure. How it will end up should be a matter of concern for all Indians and not just its denizens. This is so as universities are a source of new ideas for human advancement, hold a mirror to society, and act as a bulwark against authoritarianism. At least that is the idea behind setting them up at public expense.

(II) A recent diktat requires employees of publicly-funded universities to be subjected to the Central Civil Service (conduct) rules governing Central government employees. Now, Central government employees are prohibited from writing critically about the government and making joint representations. The silencing of academics is taken to be both a sign of backwardness and incompatible with democracy. But it is more than just how the world sees it, for stifling freedom reinforces the backwardness of a society.

(III) The argument that universities need adhere to a code of conduct is incontestable. All associations need codes of conduct to prevent chaos. Further, taking democracy seriously would make it incumbent upon them to adopt codes in keeping with its norms. Thus, universities need to follow codes maintaining respect for the autonomy of its members, ensuring fairness in the evaluation of performance of students and teachers, efficiency in the conduct of everyday business, and accountability in the



wielding of power by the administrative authority. **(1 Mark)**

- A. Both (I) and (II)
- B. Only (II)
- C. Only (III)
- D. Both (I) and (III)
- E. None of the above

**Answer : B,**

**Solution :**

In democracy, criticizing of government is an essential element. This element become more pronounced when academicians give their honest opinions about the government. Silencing academicians from giving their honest opinions about government is like removing vital safeguard against despotism. Such measures are incompatible with democracy.

The paragraph (I) talks about universities in India being under external pressure and about the characteristics of a university.

The paragraph (II) informs us about a diktat which brings employees of publicly-funded universities under the umbrella of the Central Civil Service (conduct) rules forcing them not to speak against the central government. The paragraph also points out that silencing of academicians is considered to be incompatible with democracy.

From the paragraph (II), the given inference could be derived.

The paragraph (III) informs about the need for universities to adhere to a code of conduct, and the characteristics of that code of conduct which would respect the spirit of democracy. But the given inference can't be derived from the paragraph (III).

Among the given three paragraphs, only paragraph (II) could be used to derive the given inference.

Hence, the correct answer is the option (b).

Q.111 **Essay** : 111-111):Passage:

**There are sets of four statements in question given below which when connected using the correct sentence structure forms a complete single sentence without altering the meaning of the sentences given in the question. There are four options given below the question, choose the sentence that**

**forms the correct formation of single sentence which is both grammatically correct and contextually meaningful. If none follows, choose (E) as your answer.**

Corruption and other types of financial and banking crimes are on the rise; At a time when economic offences; It is a shame that the agencies appointed to guard the country from such evils are; Themselves facing charges of serious graft; **(1 Mark)**

- A. Themselves facing charges of serious graft at a time when economic offences, corruption and other types of financial and banking crimes are on the rise, it is a shame that the agencies appointed to guard the country from such evils are.
- B. Corruption and other types of financial and banking crimes are on the rise at a time when economic offences themselves facing charges of serious graft and it is a shame that the agencies appointed to guard the country from such evils are.
- C. At a time when economic offences, corruption and other types of financial and banking crimes are on the rise, it is a shame that the agencies appointed to guard the country from such evils are themselves facing charges of serious graft.
- D. It is a shame that the agencies appointed to guard the country from such evils are corruption and other types of financial and banking crimes are on the rise at a time when economic offences themselves facing charges of serious graft.
- E. None of the above are correct.

**Answer : C,**

**Solution :**

Among the given options, only (c) forms the correct sentence which is correct and meaningful both in terms of grammar and context. Other options are either grammatically incorrect or contextually meaningless. Hence (c) is the correct choice.

*At a time when economic offences, corruption and other types of financial and banking crimes are on the rise, it is a shame that the agencies appointed to guard the country from such evils are themselves facing charges of serious graft.*

Q.112 Essay : 112-112):Passage:

**The following question consists of a sentence which is divided into three parts which contain grammatical errors in one or more than one part of the sentence. If there is an error in any part of the sentence, find the correct alternatives to replace those parts from the three options given below each question to make the sentence grammatically correct. If all the parts of the**

**sentence are incorrect and none of the alternatives are correct to replace them, then choose (D) i.e. none of the (I), (II) and (III) as your answer. If the given sentence is grammatically correct or does not require any correction, choose (E) i.e. No correction required as your answer.**

The global risk to US inflation reflects (I)/ a cyclical upturn not only in the world economy, but also mounting trade frictions (II)/ that pose serious threats to the stability of global value, or supply, chains. (III)

(I) The global risk over US inflation reflects

(II) not only a cyclical upturn in the world economy, but also mounting trade frictions

(III) that pose serious threats in the stability of global value, or supply, chains **(1**

**Mark)**

A. Both (II) and (III)

B. Both (I) and (III)

C. Only (II)

D. None of the (I), (II) and (III)

E. No correction required

**Answer : C,**

**Solution :**

Except part (II), both the other parts of the sentence are correct. It is to be noted when using *not only . . . but also* in a sentence, parallelism should be the goal. It means that the words following both parts of this correlative conjunction (i.e., not only and but also) should belong to the same parts of speech. For example, if a verb follows not only, then a verb should also follow but also. Hence, the option (c) is the most suitable answer choice.

Q.113 **Essay** : 113-113):Passage:

**In the following question a part of the sentence is given in bold, it is then followed by three sentences which try to explain the meaning of the phrase given in bold. Choose the best set of alternatives from the five options given below each question which explains the meaning of the phrase correctly without altering the meaning of the sentence given as question.**

On the high plains a rig gnaws at rock more than 3,000 feet (0.9km) underground. When the drill bit reaches about a mile and a half in depth, nearly six times the height

of the Empire State Building, it will **munch its way sideways** for another two miles.  
(I) On the high plains an insect crawls at rock more than 3,000 feet (0.9km) underground. When the drill bit reaches about a mile and a half in depth, nearly six times the height of the Empire State Building, it will then move sideways for another two miles.

(II) On the high plains a machine is persistently wearing at rock more than 3,000 feet (0.9km) underground. When the drill bit reaches about a mile and a half in depth, nearly six times the height of the Empire State Building, it will drill for another two miles.

(III) On the high plains a machine is resting at rock more than 3,000 feet (0.9km) underground. When the drill bit reaches about a mile and a half in depth, nearly six times the height of the Empire State Building, it will start creating a hole at a new direction which is sideways of the original direction for another two miles. **(1 Mark)**

- A. Only (I)
- B. Both (I) and (II)
- C. All of (I), (II) and (III)
- D. Only (II)
- E. Only (III)

**Answer : D,**

**Solution :**

‘Rig’ means ‘A device or piece of equipment designed for a particular purpose’;

‘Gnaw’ means ‘Bite at or nibble (something) so as to wear it away’;

‘Drill bits’ are ‘cutting tools used to remove material to create holes’;

‘Munch’ means ‘Eat (something) steadily and often audibly’;

The given statement means that on high plains rests a machine which is wearing away or drilling or creating a hole in a rock of depth more than 3,000 feet (0.9km) underground. When the drilling tool reach about a mile and a half in depth, it will further create its way through drilling the hole further through sideways blades of the drilling tool which will eat away the soil of the rock (mentioned as munch its way sideways).

Among the given three statements, only statement (II) correctly explains the meaning of the highlighted phrase.

Hence, the correct answer is the option (d).

Q.114 Essay : 114-114): Passage:

**If the Sentence (A) “What was perceived as an unseemly internal tussle among top officers of the premier investigating agency has morphed into a full-blown conflict between the Centre and Mr. Verma. “is the second sentence, what is the order of the other sentences after rearrangement?**

(A) What was perceived as an unseemly internal tussle among top officers of the premier investigating agency has morphed into a full-blown conflict between the Centre and Mr. Verma.

(B) But he more than hinted at interference in his functioning.

(C) The Centre may like people to think it behaved with a measure of even-handedness by divesting both Mr. Verma and Mr. Asthana of their powers, but the action of the new acting director, M. Nageswara Rao — who has transferred many officers investigating cases against Mr. Asthana — exposes where its sympathy lies.

(D) The abrupt replacement of Alok Verma as Director of the Central Bureau of Investigation, albeit as an interim measure, is the culmination of a series of murky events that must deeply embarrass the Centre.

(E) It is one thing if Mr. Verma had merely challenged the legality of his dismissal.

(F) The suggestion that the Centre’s action was meant to protect certain people has led to charges that he was removed because he was politically inconvenient. (1

**Mark)**

A. FAEB CD

B. CABDEF

C. DAEBFC

D. DACEFB

E. DAECFB

**Answer : C,**

**Solution :**

The sentence (D) introduces the theme of the paragraph which is ‘*abrupt replacement of Alok Verma* and how the incident is embarrassing the Centre’. So, the sentence (D) should be the first sentence of the paragraph. The sentence (A) is extending the idea of (D) and tells us something new that the tussle among top officers of the CBI has now changed into a conflict between the Centre and Mr. Verma. The sentences (E) and (B) are adding more information to the aspect introduced in the sentence (A). The sentences (E) and (B) seem to be contrasting each other and the sentence (B) starts with a conjunction ‘but’. So, it is more likely that the sentence (E) would immediately

precede the sentence (B). Hence, we get the sub-sequence **DAEB**. The sentence (F) informs us about an accusation made on the Centre based on its action while the sentence (C) provides information about the rationale of the Centre behind her action and how does that rationale isn't convincing.

So, the statement (F) should be the fifth sentence and the sentence (C) should be the last sentence.

Hence, the final sequence is '**DAEBFC**'.

Q.115 **Essay** : 115-115):Passage:

**If the sentence (A) "Dewan Housing Finance has been the worst hit among HFCs" is the third sentence, what is the order of the other sentences after rearrangement?**

- (A) Dewan Housing Finance has been the worst hit among HFCs.  
(B) The current crisis began with the default of Infrastructure Leasing and Financial Services on several of its dues last month.  
(C) Shares of non-banking financial companies (NBFCs) have witnessed a steep fall in recent weeks after concerns over whether they can successfully meet their short-term dues.  
(D) The Union government subsequently decided to step in and assure lenders to the company that their money would be paid back safely without any default.  
(E) Housing finance companies (HFCs) have seen their shares punished severely over fears of a severe liquidity crisis. **(1 Mark)**
- A. CBADE  
B. CBAED  
C. CBAED .  
D. CEABD  
E. BCAED

**Answer : D,**

**Solution :**

The sentence (C) provides an introduction for the paragraph which is '*non-banking financial companies witnessing a steep fall in recent weeks*'. So, the sentence (C) should be the first sentence of the paragraph. The sentence (E) informs us about the financial health of one types of NBFCs (i.e., Housing finance companies (HFCs)). So,

the sentence (E) should be the second sentence. The sentence (A) talks about the financial health of one company under the HFCs while the sentence (B) informs us about how did the current crisis began. Finally, the sentence (D) informs us about the action taken by the government to find a Solution to the problem. Hence, the final sequence is ' **CEABD** '.

Q.116 Which of the following is the mode of settlement of securities where in the transfer of securities and funds happen simultaneously?

- A. Delivery versus Payment (DvP)
- B. Negotiated Dealing System
- C. Clearing Corporation of India Ltd. (CCIL)
- D. All of the Above
- E. None of the given options is true

**Answer : A,**

**Solution :**

Delivery versus Payment (DvP) is the mode of settlement of securities where in the transfer of securities and funds happen simultaneously. This ensures that unless the funds are paid, the securities are not delivered and vice versa. DvP settlement eliminates the settlement risk in transactions.

Q.117 National Institute of Mental Health Rehabilitation will be established in \_\_\_\_\_ District instead of Bhopal.

- A. Vidisha
- B. Sehore
- C. Gwalior
- D. Panaji
- E. Indore

**Answer : B,**

**Solution :**

National Institute of Mental Health Rehabilitation will be established in Sehore District instead of Bhopal.

Q.118 Under which act NBFCs are incorporated?

- A. Banking Regulation Act, 1949
- B. Companies Act, 1956
- C. RBI Act 1934
- D. SBI Act 1955
- E. None of the given options is true

**Answer : B,**

**Solution :**

NBFCs are incorporated under the Companies Act, 1956.

Q.119 The National Khadi Festival 2018 is being organised in \_\_\_\_\_.

- A. Hyderabad
- B. Gandhinagar
- C. Ahmedabad
- D. Mumbai
- E. New Delhi

**Answer : D,**

**Solution :**

The National Khadi Festival 2018 is being organised by Khadi and Village Industries Commission (KVIC) to promote Khadi products. The festival was inaugurated by Union Minister for Micro Small & Medium Enterprises, Giriraj Singh in Mumbai on the occasion of Gandhi Jayanti 2018.

Q.120 Stock Holding was incorporated as a Public Limited Company in-

- A. 1995
- B. 1992
- C. 1986
- D. 1981
- E. 1979

**Answer : C,**

**Solution :**



Stock Holding was incorporated as a Public Limited Company in 1986. It has been jointly promoted by leading Banks and Financial Institutions. StockHolding is a subsidiary of IFCI Limited. The equity capital of StockHolding is presently held by LIC, GIC, IFCI Ltd., SU-UTI, NIA, NIC, UIC, and TOICL, all leaders in their respective fields of business.

Q.121 After the recent circular passed by the RBI, Peer-to-peer lending platforms will be treated as \_\_\_\_\_.

- A. Regular Banks
- B. Payment Banks
- C. Small Financial Banks
- D. Start-Ups
- E. NBFCs

**Answer : E,**

**Solution :**

All peer-to-peer lending (P2P) platforms will be regulated by the Reserve Bank of India (RBI), according to a government of India notification released. The gazette notification stated that all the P2P loan platforms will be treated as non-banking financial companies (NBFCs) and will be brought under the ambit of the banking regulator.

Q.122 What is the tagline of State Bank of India (SBI) after the merger?

- A. Banker to every Indian
- B. The Name you can Bank Upon
- C. A Faithful & Friendly Financial Partner
- D. Experience Next Generation Banking
- E. A Tradition of Trust

**Answer : A,**

**Solution :**

After the merger the tagline of SBI has remained same i.e. "Banker to every Indian".

Q.123 Which of the following state was ranked as the best State in Swachh Survekshan

Grameen Awards 2018?

- A. Uttarakhand
- B. Haryana
- C. Punjab
- D. Sikkim
- E. Himachal Pradesh

**Answer : B,**

**Solution :**

Haryana was ranked as the best State while Satara District of Maharashtra was ranked as the best district as per the ranking undertaken by Swachh Survekshan Grameen 2018.

Q.124 India's first Global Skills Park will be established in \_\_\_\_\_?

- A. Karnataka
- B. Madhya Pradesh
- C. Punjab
- D. Goa
- E. Maharashtra

**Answer : B,**

**Solution :**

Global Skills Park (GSP) will be established in Madhya Pradesh, the First Multi-Skills Park in India, to enhance the quality of Technical and Vocational Education And Training (TVET) System in the State and create a more skilled workforce.

Q.125 The Reserve Bank of India (RBI) has allowed state-owned oil companies to borrow long-term working capital from overseas. RBI relaxed the policy on borrowing up to \_\_\_\_\_ from the overseas by the state-owned fuel retailers.

- A. 1 billion USD
- B. 10 billion USD
- C. 5 billion USD
- D. 100 million USD
- E. 500 million USD

**Answer : B,****Solution :**

The Reserve Bank of India (RBI) has allowed state-owned oil companies to borrow long-term working capital from overseas. RBI relaxed the policy on borrowing up to 10 Billion USD from the overseas by the state-owned fuel retailers.

Q.126 The 36th National Games will be held in \_\_\_\_\_.

- A. Haryana
- B. Goa
- C. Gujarat
- D. NEW DELHI
- E. Kerala

**Answer : B,****Solution :**

The 36th National Games in Goa will be held from March 30 to April 14 next year.

Q.127 Who among the following won 2018 Nobel Peace Prize?

- A. Juan Manuel Santos and Nadia Murad
- B. Nadia Murad and Malala
- C. Denis Mukwege and Tawakkol Karman
- D. Denis Mukwege and Nadia Murad
- E. Juan Manuel Santos and Sonam Wangchuk

**Answer : D,****Solution :**

The Norwegian Nobel Committee has decided to award the 2018 Nobel Peace Prize to Denis Mukwege and Nadia Murad "for their efforts to end the use of sexual violence as a weapon of war and armed conflict".

Q.128 Pension Fund Regulatory and Development Authority (PFRDA) is authorized by?

- A. GOI

- B. RBI
- C. Ministry of Commerce
- D. Ministry of Finance
- E. SBI

**Answer : D,**

**Solution :**

Pension Fund Regulatory and Development Authority (PFRDA) is authorized by Ministry of Finance, Department of Financial Services.

- Q.129 India and Russia signed the S-400 air defence system deal. The amount sanctioned under the deal is \_\_\_\_\_.
- A. \$5 billion
  - B. \$50 million
  - C. \$2 billion
  - D. \$500 million
  - E. \$1 billion

**Answer : A,**

**Solution :**

India and Russia signed the \$5 billion S-400 air defence system deal during the annual bilateral summit between Prime Minister Narendra Modi and Russian President Vladimir Putin at Hyderabad House.

- Q.130 The process by which the central bank of a country controls the supply of money in the economy by exercising its control over interest rates in order to maintain price stability and achieve high economic growth is known as:
- A. Economic Policy
  - B. Monetary Policy
  - C. Fiscal Policy
  - D. Credit Policy
  - E. Budgetary Policy

**Answer : B,**

**Solution :**

Monetary Policy is the process by which monetary authority of a country, generally a central bank controls the supply of money in the economy by exercising its control over interest rates in order to maintain price stability and achieve high economic growth. In India, the central monetary authority is the Reserve Bank of India (RBI). is so designed as to maintain the price stability in the economy.

Q.131 \_\_\_\_\_ has recently been appointed as the ambassador and India's permanent representative to the United Nations Conference on Disarmament (UNCD).

- A. AjitDoval
- B. Shivshankar Menon
- C. Syed Akbaruddin
- D. Nirupama Rao
- E. Pankaj Sharma

**Answer : E,**

**Solution :**

Pankaj Sharma has been appointed as the ambassador and India's permanent representative to the United Nations Conference on Disarmament (UNCD) in Geneva, Switzerland. Mr Sharma will replace Amandeep Gill. He is currently the joint secretary (Disarmament and International Security Division) in the Ministry of External Affairs.

Q.132 Part of company's earning or profit which is paid out to shareholders is known as

- A. Premium
- B. Dividend
- C. Bonus
- D. Sum Assured
- E. Return

**Answer : B,**

**Solution :**

A dividend is a payment made by a corporation to its shareholders, usually as a

distribution of profits. When a corporation earns a profit or surplus, it can re-invest it in the business (called retained earnings) and pay a fraction of the profit as a dividend to shareholders.

Q.133 Kanha National Park is located in

- A. New Delhi
- B. Uttar Pradesh
- C. Haryana
- D. Madhya Pradesh
- E. None of these

**Answer : D,**

**Solution :**

This is one of the most beautiful and well maintained wildlife sanctuaries in India. Located in Madhya Pradesh, Kanha National Park was established in the year 1955. This wildlife sanctuary also forms the heart of the Kanha Tiger Reserve, created in 1974 under Project Tiger.

Q.134 All Scheduled Commercial Banks excluding \_\_\_\_\_ are eligible to implement under Gold Monetization Scheme, 2015?

- A. Private Sector Banks
- B. IDBI Bank Limited
- C. State Bank of India
- D. Regional Rural Banks
- E. Public Sector Banks

**Answer : D,**

**Solution :**

All Scheduled Commercial Banks excluding Regional Rural Banks (RRBs) are eligible to implement the Scheme.

Q.135 21 countries in the IORA have adopted the Delhi Declaration on Renewable Energy. What does R stands for in IORA?

- A. Rim

- B. Renewable
- C. Region
- D. Regional
- E. Reproductive

**Answer : A,**

**Solution :**

As many as 21 countries in the Indian Ocean Rim Association, IORA, adopted the Delhi Declaration on Renewable Energy in the Indian Ocean Region.

Q.136 Where is the head office of Bank for International Settlements (BIS)?

- A. Zurich, Switzerland
- B. New York, USA
- C. Basel, Switzerland
- D. Berlin, Germany
- E. Geneva, Switzerland

**Answer : C,**

**Solution :**

Basel, Switzerland is the head office of Bank for International Settlements (BIS).

Q.137 Reliance Health Insurance, has received final approval from IRDAI for its new health insurance business. Who is the CEO of Reliance Health Insurance?

- A. Akash Ambani
- B. Ravi Viswanath
- C. Mukesh Ambani
- D. Isha Ambani
- E. Vikram Kapoor

**Answer : B,**

**Solution :**

Reliance Health Insurance, a wholly-owned subsidiary of Reliance Capital, has received final approval from IRDAI for its new health insurance business. Reliance

Capital has designated Ravi Viswanath, who has over two decades of global experience in health insurance, as CEO of the new health insurance company.

Q.138 \_\_\_\_\_ is a quick and easy way of transferring personal remittances from abroad to beneficiaries in India.

- A. MTSS
- B. NEFT
- C. RTGS
- D. NPCI
- E. SWIFT

**Answer : A,**

**Solution :**

Money Transfer Service Scheme (MTSS) is a quick and easy way of transferring personal remittances from abroad to beneficiaries in India. Only inward personal remittances into India such as remittances towards family maintenance and remittances favouring foreign tourists visiting India are permissible.

Q.139 Who has been appointed the chairman of the working committee and director on the board by the international industry body-World Federation of Exchanges (WFE).

- A. Rana Kapoor
- B. Vikram Limaye
- C. Shikha Sharma
- D. R S Sharma
- E. Sandeep Bakhshi

**Answer : B,**

**Solution :**

The National Stock Exchange's (NSE) MD and CEO Vikram Limaye has been appointed the chairman of the working committee and director on the board by the international industry body-World Federation of Exchanges (WFE).

Q.140 Which of the following is a receipt, declaring ownership of shares of a foreign company and can be listed in India and traded in rupees?



- A. ADR
- B. GDR
- C. IDR
- D. EDR
- E. None of the given options is true

**Answer : C,**

**Solution :**

An IDR (Indian Depository Receipts) is a receipt, declaring ownership of shares of a foreign company. These receipts can be listed in India and traded in rupees.

- Q.141 Former batsman Nick Compton recently announced his retirement from cricket. He belongs to\_\_\_\_\_.
- A. Australia
  - B. West Indies
  - C. South Africa
  - D. England
  - E. New Zealand

**Answer : D,**

**Solution :**

Former England batsman Nick Compton announced his retirement from cricket. South Africa-born Compton played 16 Tests for England, scoring two hundred.

- Q.142 Which among the following conditions, Regional Rural Banks (RRBs) should fulfill to become eligible to open new branch/branches?
- A. No default in maintenance of SLR and CRR during the last two years
  - B. Operational profits are being made
  - C. Net worth shows improvement
  - D. Net NPA ratio does not exceed 8 per cent
  - E. All of the above conditions should fulfill by RRBs

**Answer : E,**

**Solution :**

RRBs should fulfill the following conditions, to become eligible to open new branch/es:

- i. No default in maintenance of SLR and CRR during the last two years;
- ii. Operational profits are being made;
- iii. Net worth shows improvement;
- iv. Net NPA ratio does not exceed 8 per cent.

Q.143 Who was recently sworn in as the 114th Justice of the Supreme Court of the United States?

- A. Brett Kavanaugh
- B. Mike Pompeo
- C. Mike Pence
- D. John Roberts
- E. Tarun Gogoi

**Answer : A,**

**Solution :**

In USA, President Donald Trump's controversial nominee Brett Kavanaugh was sworn in as the 114th Justice of the Supreme Court.

Q.144 The Foreign exchange of India is kept with \_\_\_\_\_

- A. SBI
- B. ECGC
- C. RBI
- D. NABARD
- E. SEBI

**Answer : C,**

**Solution :**

Reserve Bank of India accumulates foreign currency reserves by purchasing from authorized dealers in open market operations. Foreign exchange reserves of India act as a cushion against rupee volatility once global interest rates starts rising. The Foreign exchange reserves of India consists of below four categories. (a) Foreign

Currency Assets(b) Gold (c) SDRs (d) Reserve Tranche Position in the IMF.

Q.145 Which of the following state has joined Goa as a partner state to organise Goa International Film Festival that will be held in November 2018?

- A. Jharkhand
- B. Gujarat
- C. Madhya Pradesh
- D. Maharashtra
- E. Uttar Pradesh

**Answer : A,**

**Solution :**

Frank Vincent, who played the mob boss Phil Leotardo on The Sopranos and appeared in several Martin Scorsese films, has died at the age of 78.

Q.146 The Indian Air Force has launched an innovative mobile health App recently. What is the name of the app?

- A. Medical
- B. MedAid
- C. MedWatch
- D. MedEd
- E. MedForce

**Answer : C,**

**Solution :**

On the occasion of 86th anniversary, the Indian Air Force has launched an innovative mobile health App named 'MedWatch' in keeping with the Prime Minister's vision of 'Digital India, Ayushman Bharat and Mission Indradhanush'.

Q.147 World Animal Day is celebrated on \_\_\_\_\_.

- A. 23 September
- B. 04 October
- C. 15 July
- D. 07 June

E. 14 September

**Answer : B,**

**Solution :**

World Animal Day is celebrated at various parts of the world on 4th October to raise the status of animals in order to improve welfare standards around the globe.

Q.148 What is the Capital of Saudi Arabia?

- A. Jakarta
- B. Doha
- C. Riyadh
- D. Aden
- E. Baku

**Answer : C,**

**Solution :**

Riyadh is the Capital of Saudi Arabia and Currency is Saudi riyal

Q.149 Cheruthoni Dam, the largest concrete gravity dam in which state?

- A. Andhra Pradesh
- B. Karnataka
- C. Tamil Nadu
- D. Kerala
- E. None of these

**Answer : D,**

**Solution :**

Cheruthoni Dam, the largest concrete gravity dam in Kerala, is located close to Idukki arch dam. It is the third highest dam in India with a 454 feet-high across River Cheruthoni.

Q.150 Sangli is a City and the district headquarters of Sangli District in the state of

Maharashtra and situated on which bank of river?

- A. Penna River
- B. Krishna River
- C. Minachil River
- D. Savitri River
- E. None of these

**Answer : B,**

**Solution :**

Sangli is a City and the district headquarters of Sangli District in the state of Maharashtra, in western India. Sangli is situated on the banks of river Krishna.

Q.151 Name the First Bank to introduce saving Bank in India.

- A. Bank of Hindustan
- B. Syndicate Bank
- C. Bengal Bank
- D. Presidency Bank
- E. None of these

**Answer : D,**

**Solution :**

Savings account system in India was started by Presidency Bank.

Q.152 Where is the headquarter of First Rand Bank?

- A. USA
- B. South Africa
- C. Brazil
- D. Australia
- E. None of these

**Answer : B,**

**Solution :**

FirstRand Limited, also referred to as FirstRand Group is the holding company of

FirstRand Bank, and is a financial services provider in South Africa. It is one of the financial services providers licensed by the Reserve Bank of South Africa, the national banking regulator.

Q.153 Lava Dance a folk dance mainly performed by the males in which state?

- A. Lakshadweep
- B. Puducherry
- C. Daman and deep
- D. New Delhi
- E. None of these

**Answer : A,**

**Solution :**

Lava Dance a folk dance mainly performed by the males in Lakshadweep, is a renowned traditional dance form performed on festive occasions. The word 'Lava' means beautiful dance, song and rhythmic movement.

Q.154 Who is the Women and Child Development Minister of India?

- A. Ravi Shankar Prasad
- B. NitinJairamGadkari
- C. Smt. Maneka Sanjay Gandhi
- D. RamvilasPaswan
- E. Narendra Singh Tomar

**Answer : C,**

**Solution :**

Maneka Sanjay Gandhi is the Indian Union Cabinet Minister for Women & Child Development and She is also an animal rights activist, environmentalist and is the Member of Parliament for Pilibhit.

Q.155 In which district first phase of 65 MW KashangHydel Project has launched in Himachal Pradesh?

- A. Kinnaur
- B. Kullu

- C. Sirmaur
- D. Hamirpur
- E. None of these

**Answer : A,**

**Solution :**

Himachal Chief Minister Virbhadra Singh inaugurated first phase of 65 MW KashangHydel Project in the tribal Kinnaur district. The work on 195 MW (three units of 65 MW each) Kashang Project is being executed by Himachal Pradesh Power Corporation Limited.